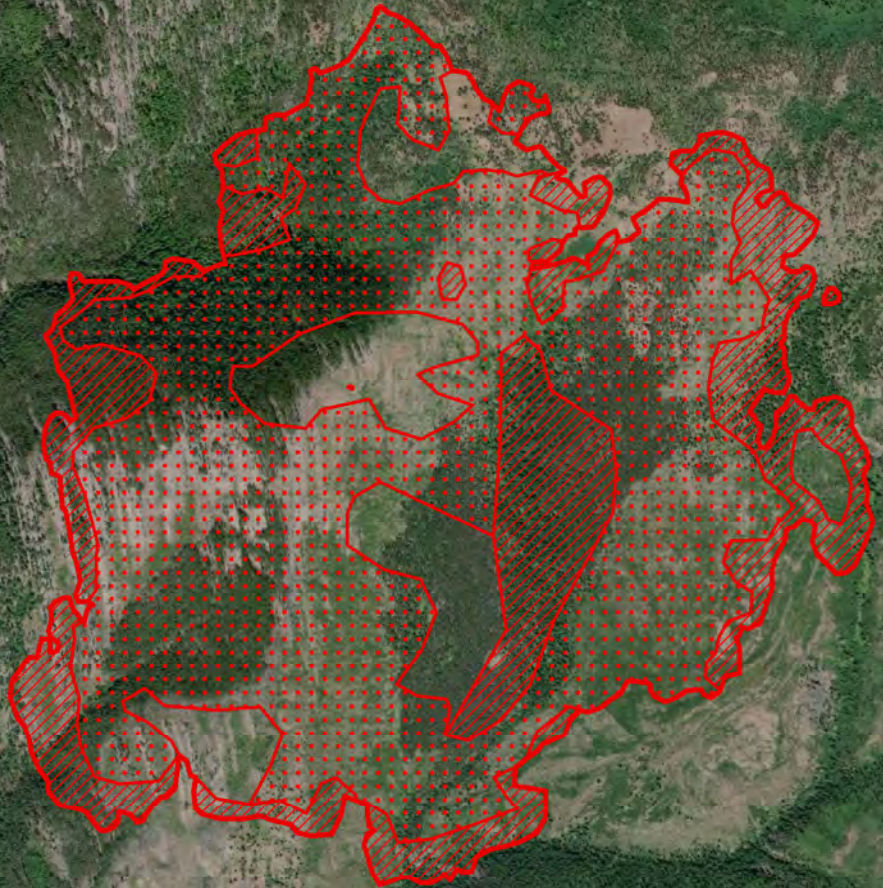


115°35'W 115°34.5'W 115°34'W 115°33.5'W 115°33'W 115°32.5'W 115°32'W 115°31.5'W 115°31'W 115°30.5'W 115°30'W 115°29.5'W 115°29'W 115°28.5'W 115°28'W 115°27.5'W

48°36'N  
48°35.5'N  
48°35'N  
48°34.5'N  
48°34'N  
48°33.5'N  
48°33'N




48°35.5'N  
48°35'N  
48°34.5'N  
48°34'N  
48°33.5'N  
48°33'N

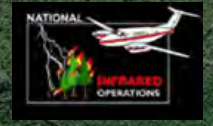
**Infrared Map**  
**8/21/2018**  
**Gold Hill Fire**  
**MT-KNF-000195**  
  
**Imagery Date:**  
**08/20/2018 2127hrs MDT**  
**Interpreted Acres: 1,166**



NAD83 UTM Zone 11



-  20180820\_2127\_Gold\_Hill\_HeatPerimeter
-  20180820\_2127\_Gold\_Hill\_IntenseHeat
-  20180820\_2127\_Gold\_Hill\_ScatteredHeat



115°35'W 115°34.5'W 115°34'W 115°33.5'W 115°33'W 115°32.5'W 115°32'W 115°31.5'W 115°31'W 115°30.5'W 115°30'W 115°29.5'W 115°29'W 115°28.5'W 115°28'W 115°27.5'W