

115°34'0"W 115°33'30"W 115°33'0"W 115°32'30"W 115°32'0"W 115°31'30"W 115°31'0"W 115°30'30"W 115°30'0"W 115°29'30"W 115°29'0"W 115°28'30"W 115°28'0"W 115°27'30"W 115°27'0"W

48°35'30"N

48°35'0"N

48°34'30"N

48°34'0"N

48°33'30"N

48°33'0"N

48°33'0"N

48°35'30"N

48°35'0"N

48°34'30"N

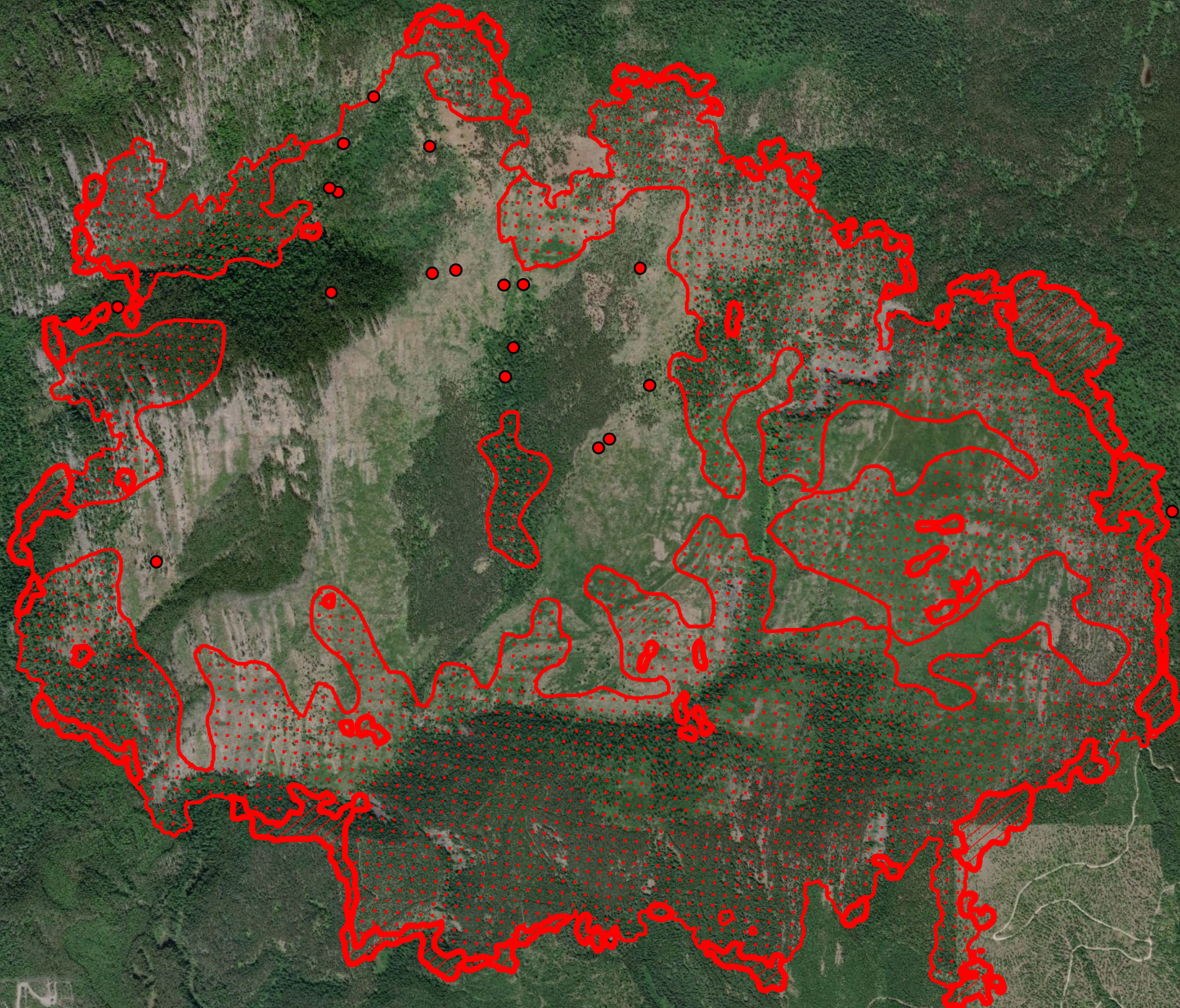
48°34'0"N

48°33'30"N


48°33'0"N

115°34'0"W 115°33'30"W 115°33'0"W 115°32'30"W 115°32'0"W 115°31'30"W 115°31'0"W 115°30'30"W 115°30'0"W 115°29'30"W 115°29'0"W 115°28'30"W 115°28'0"W 115°27'30"W 115°27'0"W

Gold Hill MT-KNF-000195 Infrared Red Heat Map




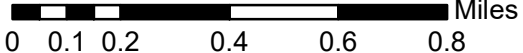
IR Interpreter - Brian Banks
 Intepreted Acres - 3,176
 Flight Date- 08-24-18
 Flight Time- 22:43



Legend:

- Isolated Heat
- / / / / Intense Heat
- Scattered Heat
- Heat Perimeter



 Miles
 0 0.1 0.2 0.4 0.6 0.8

Source: Esri, DigitalGlobe, GeoEye, Earthstar Geographics, CNES/Airbus DS, USDA, USGS, AeroGRID, IGN, and the GIS User Community