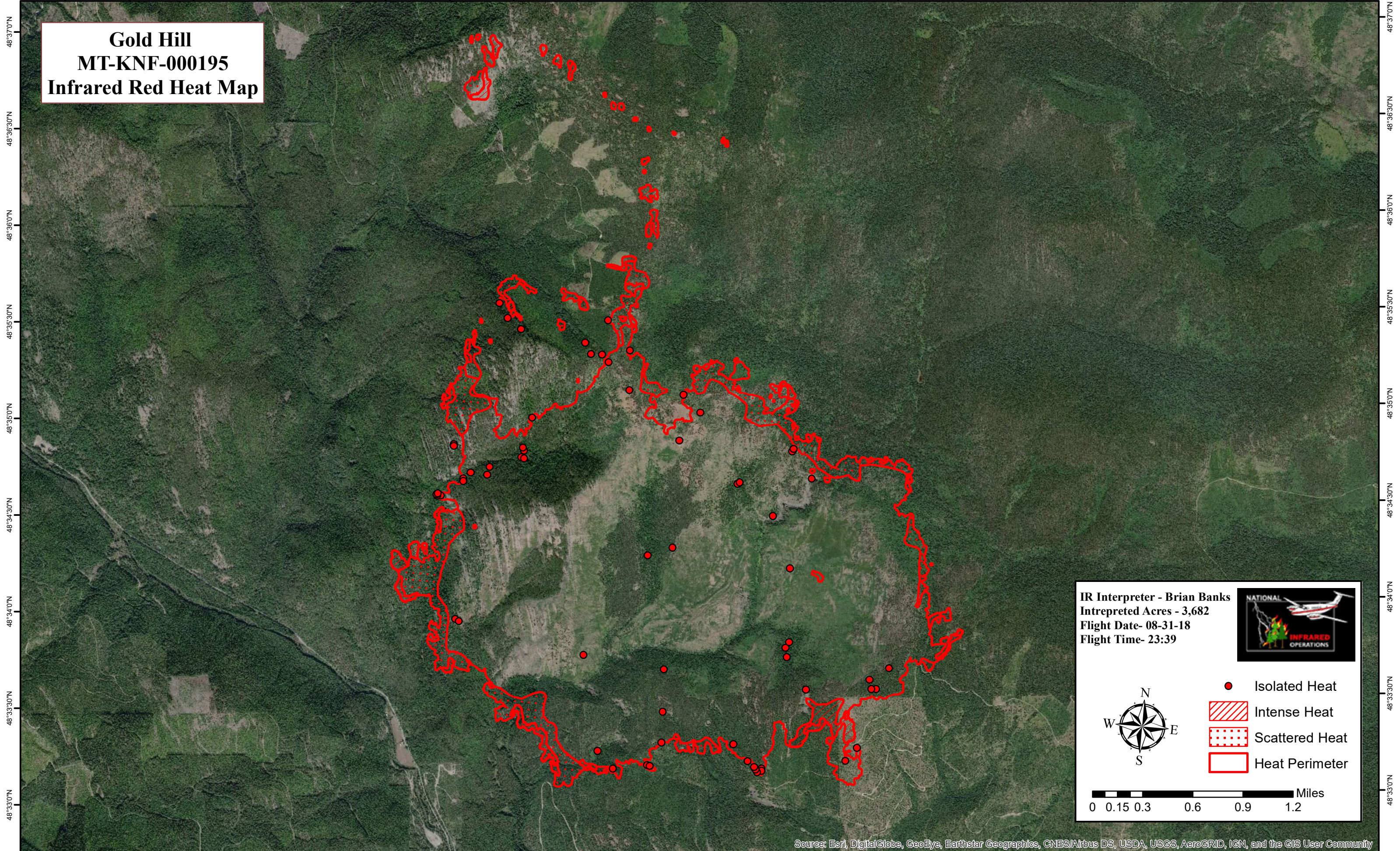



115°35'30"W 115°35'0"W 115°34'30"W 115°34'0"W 115°33'30"W 115°33'0"W 115°32'30"W 115°32'0"W 115°31'30"W 115°31'0"W 115°30'30"W 115°30'0"W 115°29'30"W 115°29'0"W 115°28'30"W 115°28'0"W 115°27'30"W 115°27'0"W 115°26'30"W 115°26'0"W 115°25'30"W

**Gold Hill
MT-KNF-000195
Infrared Red Heat Map**




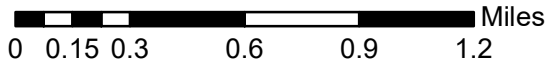
IR Interpreter - Brian Banks
 Intrepreted Acres - 3,682
 Flight Date- 08-31-18
 Flight Time- 23:39



Legend:

- Isolated Heat
- Intense Heat
- Scattered Heat
- Heat Perimeter





Source: Esri, DigitalGlobe, GeoEye, Earthstar Geographics, CNES/Airbus DS, USDA, USGS, AeroGRID, IGN, and the GIS User Community

115°35'30"W 115°35'0"W 115°34'30"W 115°34'0"W 115°33'30"W 115°33'0"W 115°32'30"W 115°32'0"W 115°31'30"W 115°31'0"W 115°30'30"W 115°30'0"W 115°29'30"W 115°29'0"W 115°28'30"W 115°28'0"W 115°27'30"W 115°27'0"W 115°26'30"W 115°26'0"W 115°25'30"W

48°37'0"N
48°36'30"N
48°36'0"N
48°35'30"N
48°35'0"N
48°34'30"N
48°34'0"N
48°33'30"N
48°33'0"N

48°37'0"N
48°36'30"N
48°36'0"N
48°35'30"N
48°35'0"N
48°34'30"N
48°34'0"N
48°33'30"N
48°33'0"N