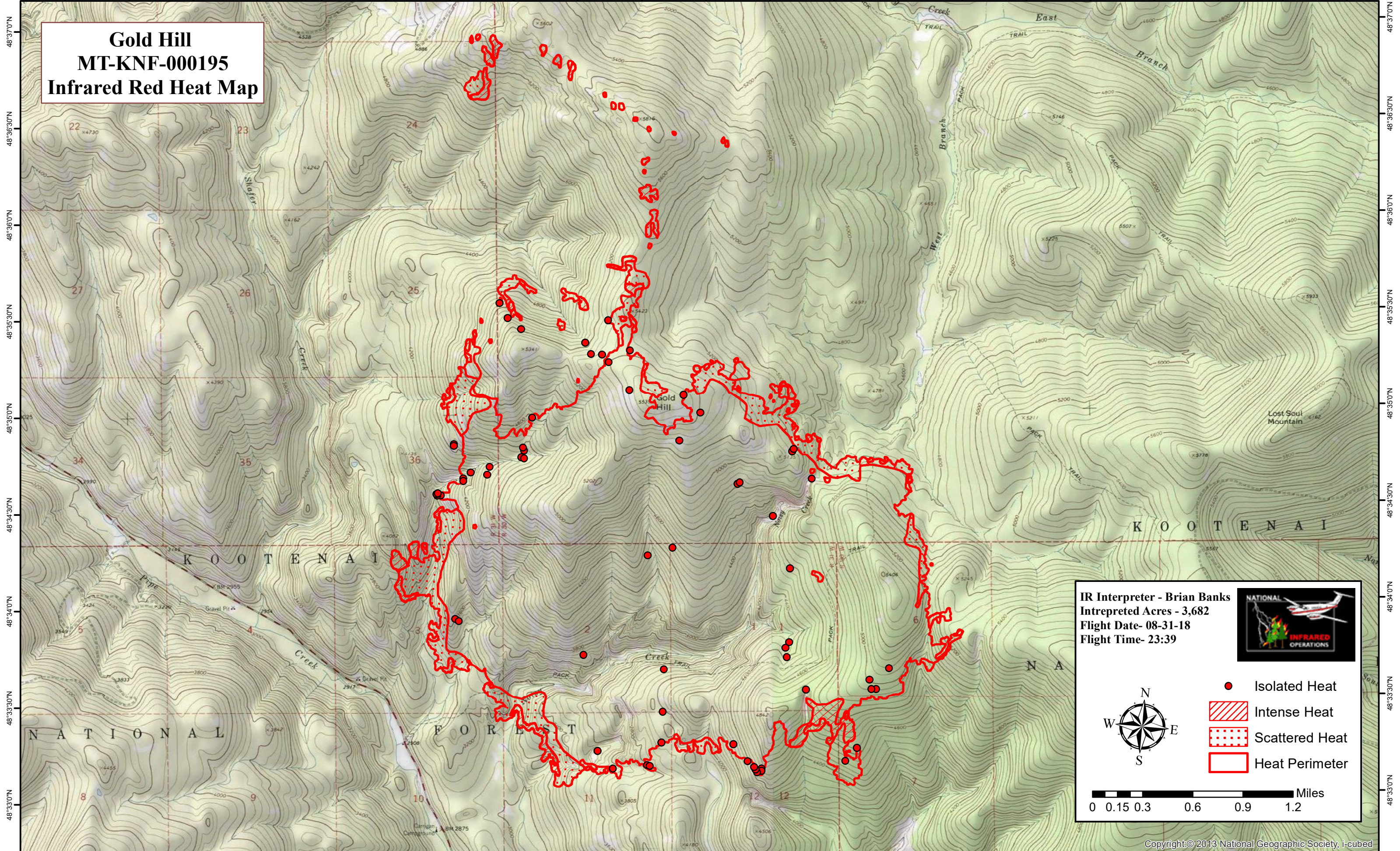
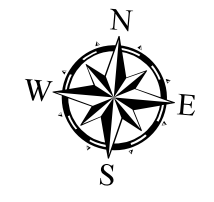


115°35'30"W 115°35'0"W 115°34'30"W 115°34'0"W 115°33'30"W 115°33'0"W 115°32'30"W 115°32'0"W 115°31'30"W 115°31'0"W 115°30'30"W 115°30'0"W 115°29'30"W 115°29'0"W 115°28'30"W 115°28'0"W 115°27'30"W 115°27'0"W 115°26'30"W 115°26'0"W 115°25'30"W

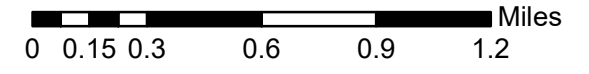
**Gold Hill  
MT-KNF-000195  
Infrared Red Heat Map**



**IR Interpreter - Brian Banks**  
Intepreted Acres - 3,682  
Flight Date- 08-31-18  
Flight Time- 23:39



- Isolated Heat
- Intense Heat
- Scattered Heat
- Heat Perimeter



115°35'30"W 115°35'0"W 115°34'30"W 115°34'0"W 115°33'30"W 115°33'0"W 115°32'30"W 115°32'0"W 115°31'30"W 115°31'0"W 115°30'30"W 115°30'0"W 115°29'30"W 115°29'0"W 115°28'30"W 115°28'0"W 115°27'30"W 115°27'0"W 115°26'30"W 115°26'0"W 115°25'30"W