

115°37'0"W

115°36'30"W

48°36'0"N

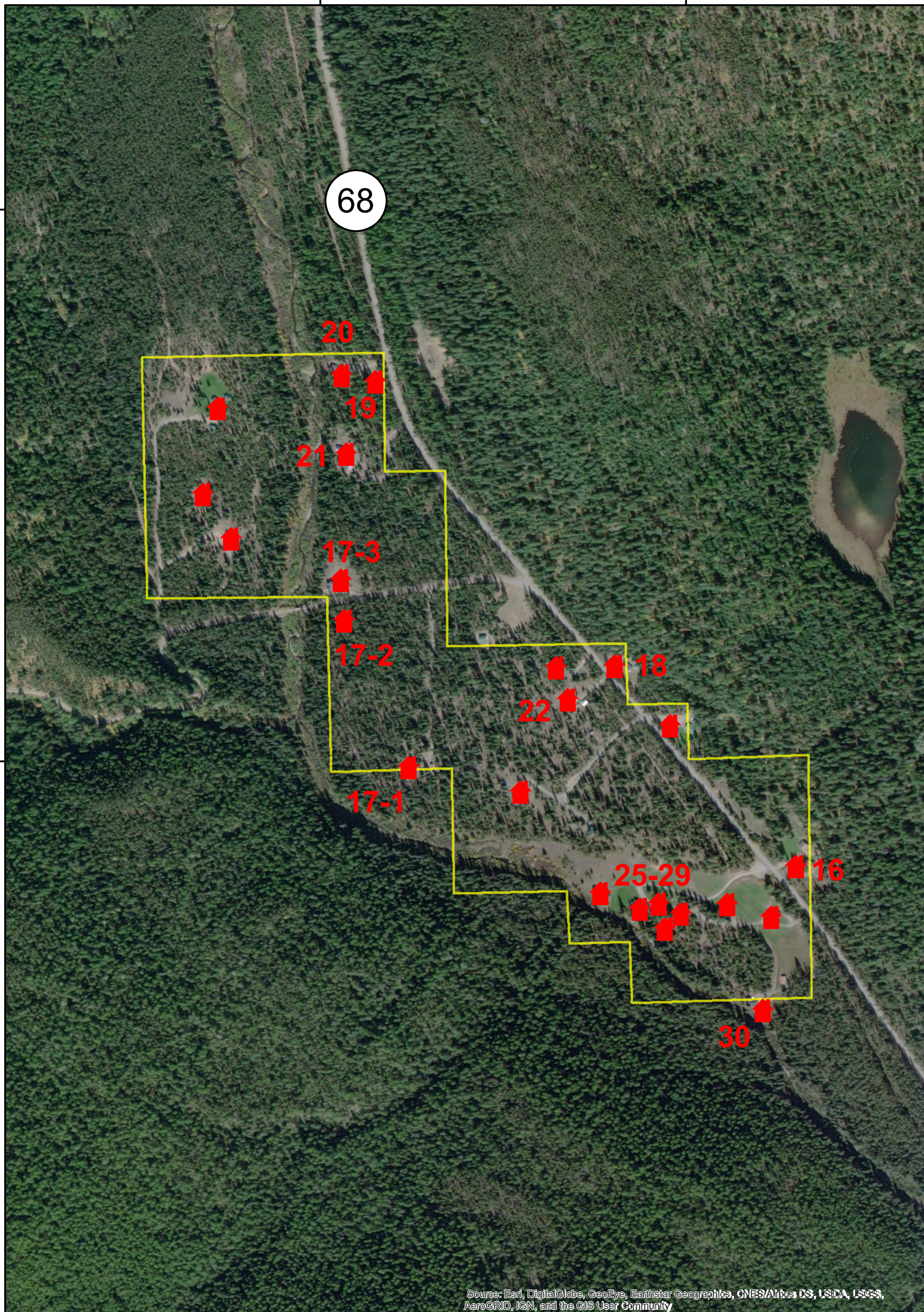
48°36'0"N

48°35'30"N

48°35'30"N

48°35'0"N

48°35'0"N



Source: Esri, DigitalGlobe, GeoEye, Earthstar Geographics, CNES/Airbus DS, USDA, USGS, AeroGRID, IGN, and the GIS User Community

115°37'0"W

115°36'30"W

# Structure Protection Map



## Sections 28 & 29

### Gold Hill Fire

MT-KNF-000195



#### Legend

-  Structures
-  Other Private

