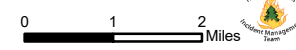
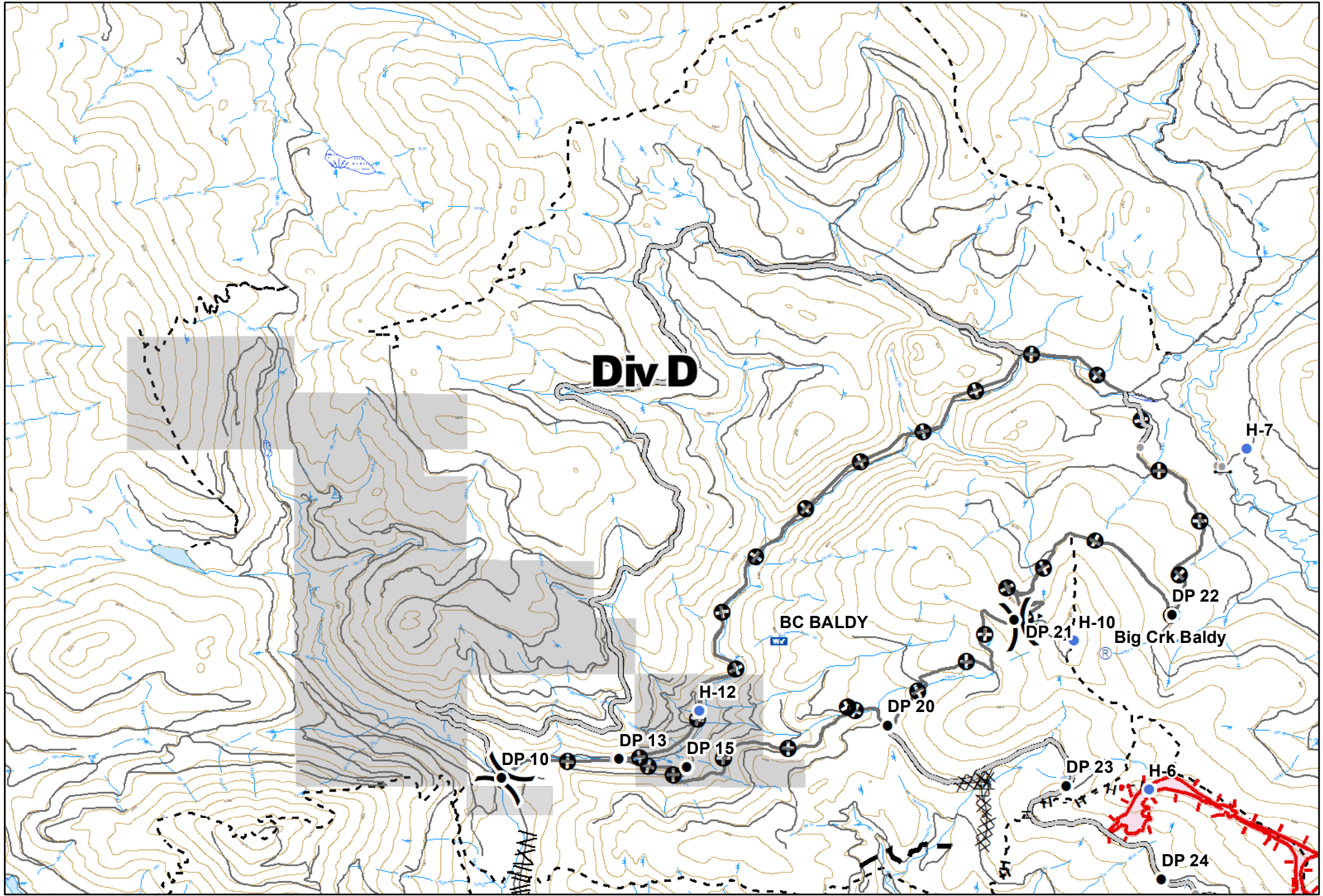


**GOLD HILL**  
 MT-KNF-000195  
 Fire perimeter as of  
 09/02/2018 0050 hrs  
 3,788 Acres

- |   |             |   |                       |   |              |   |                         |   |                        |     |                         |   |                      |   |                               |
|---|-------------|---|-----------------------|---|--------------|---|-------------------------|---|------------------------|-----|-------------------------|---|----------------------|---|-------------------------------|
| × | Closure     | ● | Helispot              | Ⓟ | Pump         | ⚠ | Value at Risk           | — | Uncontrolled Fire Edge | R - | Road as Completed Line  | ✕ | Proposed Dozer Line  | ■ | Wildfire Daily Fire Perimeter |
| ● | Other       | Ⓜ | Incident Command Post | Ⓜ | Repeater     | Ⓜ | Division Break          | — | Completed Line         | —   | Planned Fire Line       | ✕ | Other                | ■ | Stimson Lumber                |
| ● | Drop Point  | Ⓜ | Lookout               | ⚠ | Safety Zone  | Ⓜ | Landings                | ✕ | Completed Dozer Line   | —   | Access or Improved Road | Ⓜ | Line Break Completed | ■ | Other Private                 |
| ⊙ | Fire Origin | Ⓜ | Mobile Weather Unit   | Ⓜ | Water Source | — | H - Completed Hand Line | — | Roads                  | —   | Blue Mtn                |   |                      |   |                               |



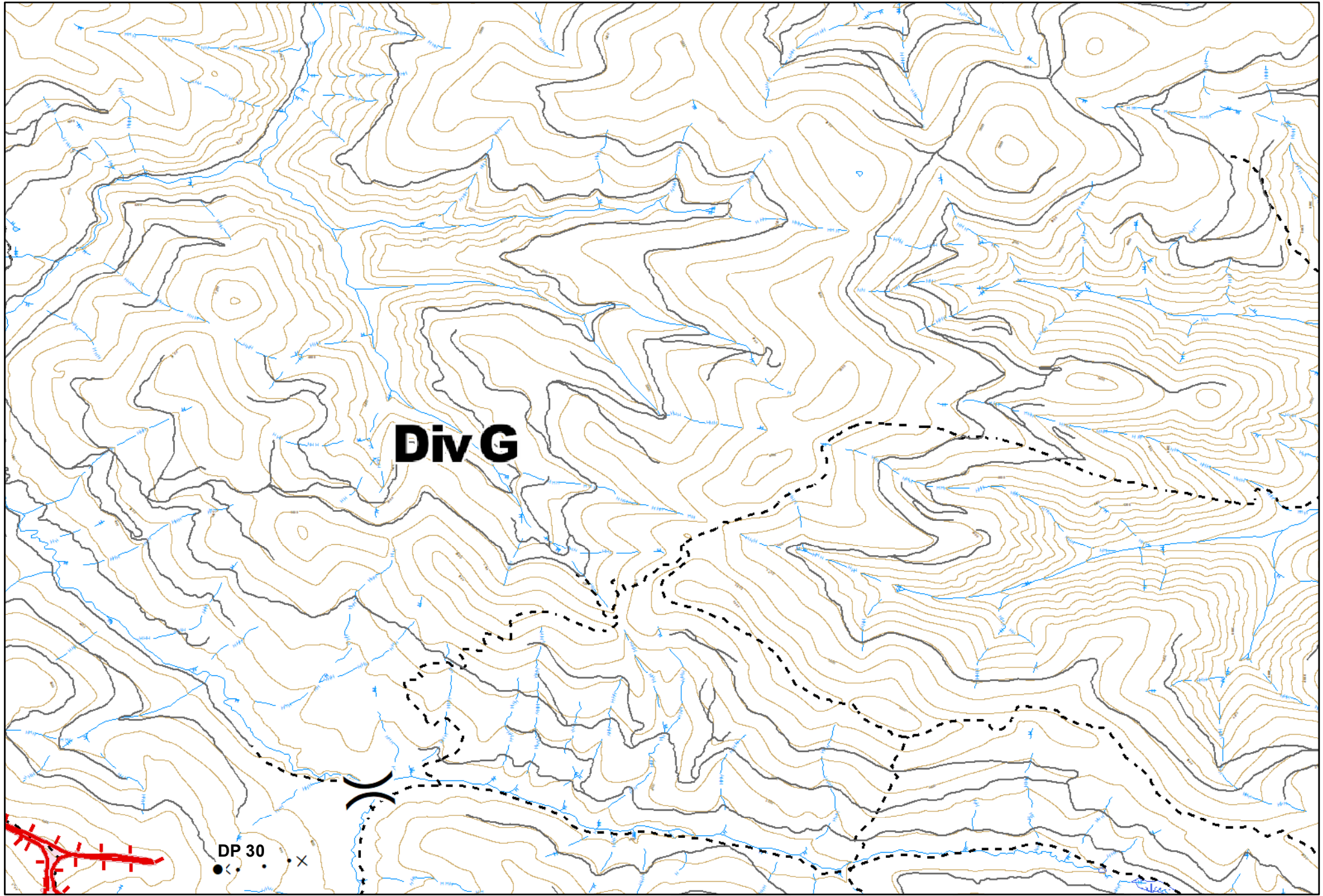




**GOLD HILL**  
 MT-KNF-000195  
 Fire perimeter as of  
 09/02/2018 0050 hrs  
 3,788 Acres

- |   |             |   |                       |   |             |   |                |   |                        |     |                         |   |                   |   |                               |
|---|-------------|---|-----------------------|---|-------------|---|----------------|---|------------------------|-----|-------------------------|---|-------------------|---|-------------------------------|
| × | Closure     | ● | Helispot              | Ⓟ | Pump        | ⚡ | Value at Risk  | — | Uncontrolled Fire Edge | H - | Completed Hand Line     | — | Planned Fire Line | ■ | Wildfire Daily Fire Perimeter |
| ● | Other       | Ⓜ | Incident Command Post | Ⓡ | Repeater    | ) | Division Break | — | Completed Dozer Line   | —   | Access or Improved Road | ⊕ | Other             | ■ | Stimson Lumber                |
| ● | Drop Point  | Ⓜ | Lookout               | ▲ | Safety Zone | ★ | Landings       | — | Line Break Completed   | —   | Roads                   | ■ | Other Private     | 0 |                               |
| ⦿ | Fire Origin | Ⓜ | Mobile Weather Unit   |   |             |   |                |   |                        |     |                         |   |                   |   |                               |

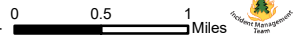




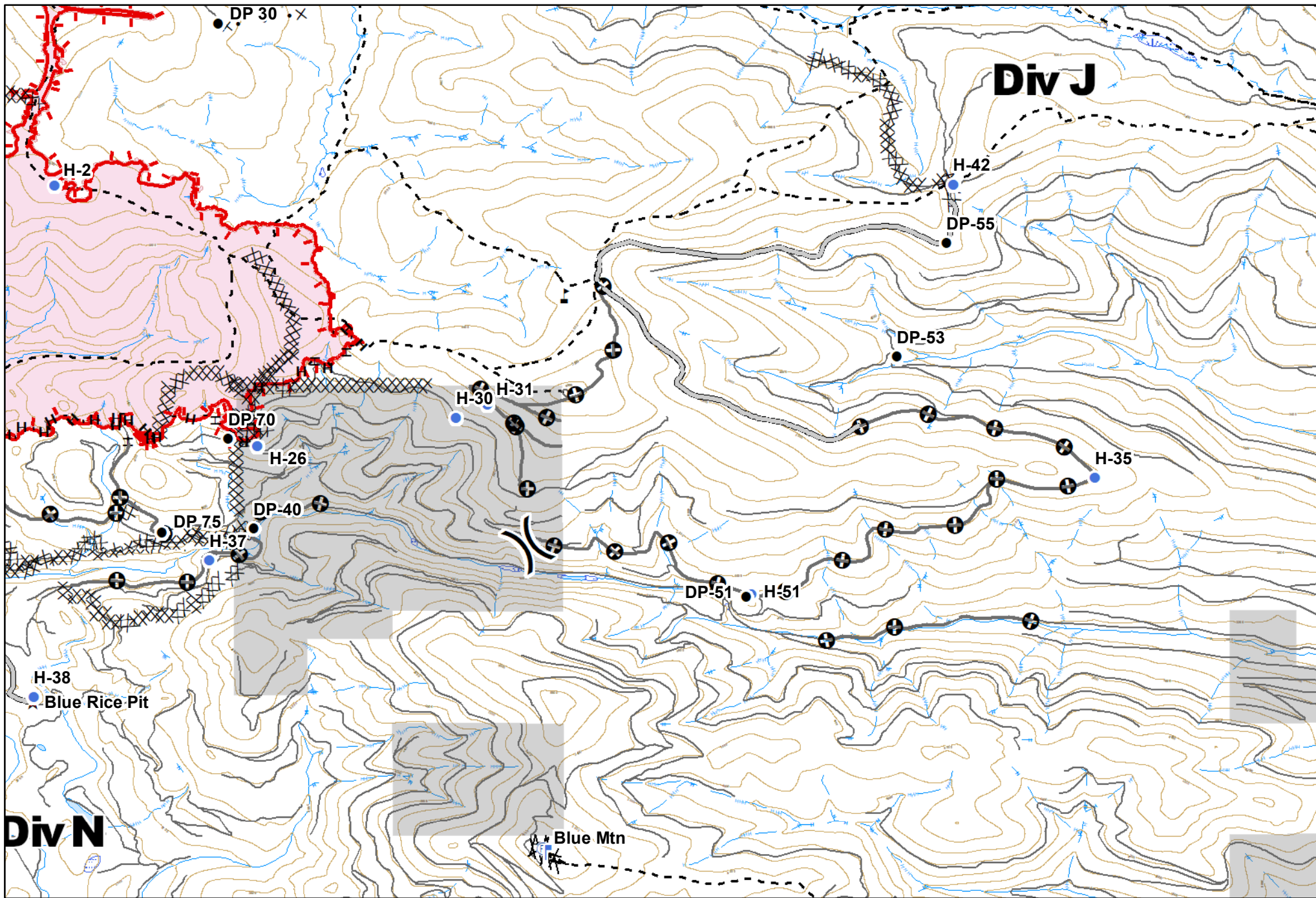
**GOLD HILL**  
 MT-KNF-000195  
 Fire perimeter as of  
 09/02/2018 0050 hrs  
 3,788 Acres

- ✕ Closure
- Other
- Drop Point
- Fire Origin
- Helispot
- ▢ Incident Command Post
- ▢ Lookout
- ▢ Mobile Weather Unit
- Ⓟ Pump
- Ⓟ Repeater
- Ⓟ Safety Zone
- Ⓟ Water Source
- ⚠ Value at Risk
- ⌋ Division Break
- ★ Landings

▬ Uncontrolled Fire Edge  
 ✕• Proposed Dozer Line  
 — Roads  
 ▭ Wildfire Daily Fire Perimeter



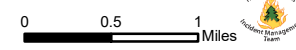


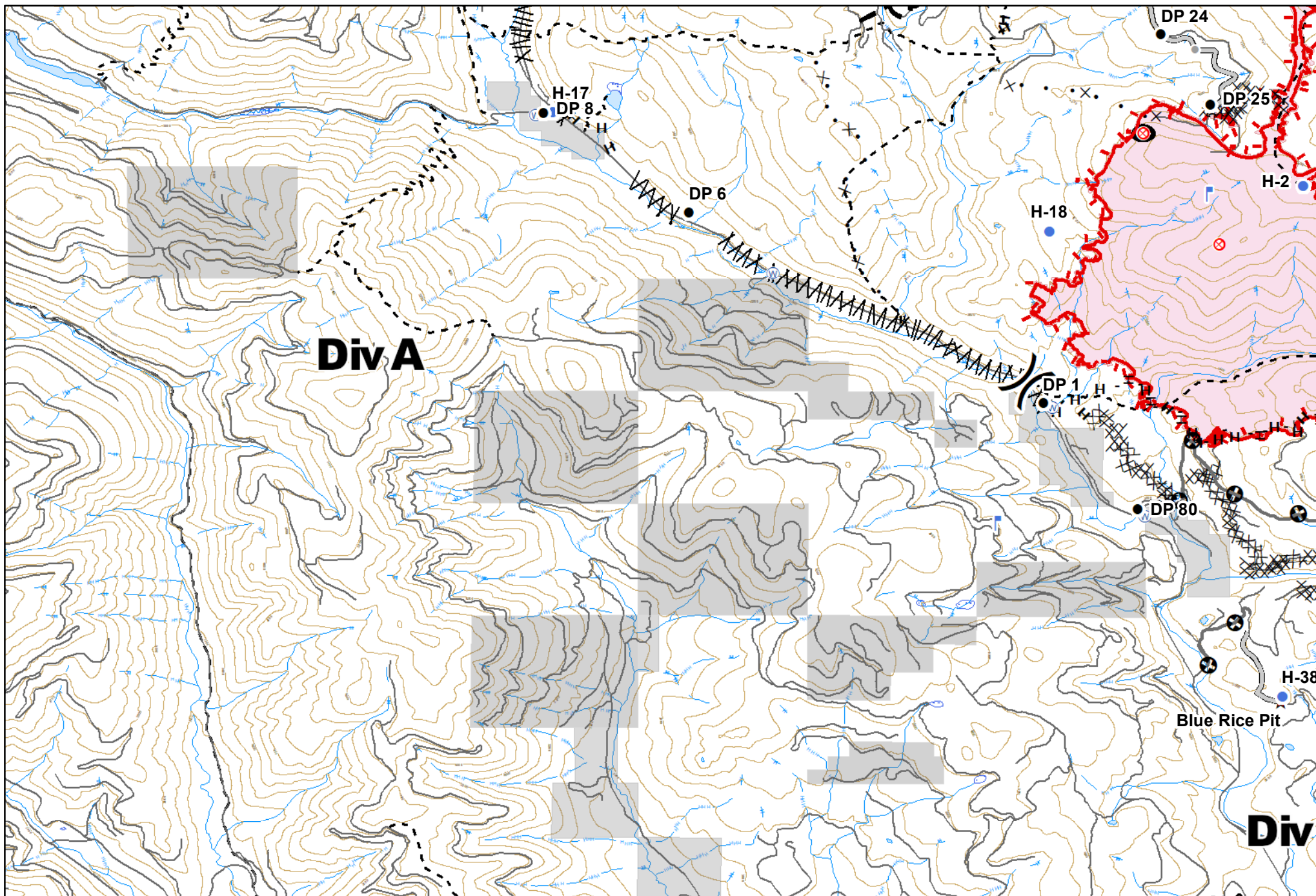


**GOLD HILL**  
MT-KNF-000195

Fire perimeter as of  
09/02/2018 0050 hrs  
3,788 Acres

- |   |             |   |                       |   |              |   |                |     |                        |     |                         |   |                     |   |                               |
|---|-------------|---|-----------------------|---|--------------|---|----------------|-----|------------------------|-----|-------------------------|---|---------------------|---|-------------------------------|
| × | Closure     | ● | Helispot              | Ⓟ | Pump         | ⚠ | Value at Risk  | —   | Uncontrolled Fire Edge | R - | Road as Completed Line  | ⊗ | Proposed Dozer Line | ■ | Wildfire Daily Fire Perimeter |
| ● | Other       | Ⓜ | Incident Command Post | Ⓜ | Repeater     | ⌘ | Division Break | ⊗   | Completed Dozer Line   | —   | Access or Improved Road | ⊕ | Other               | ■ | Stimson Lumber                |
| ● | Drop Point  | Ⓜ | Lookout               | ▲ | Safety Zone  | ⌘ | Landings       | H - | Completed Hand Line    | ⌘   | Line Break Completed    | — | Roads               |   |                               |
| ● | Fire Origin | Ⓜ | Mobile Weather Unit   | Ⓜ | Water Source | ★ | Landings       |     |                        |     |                         |   |                     |   |                               |





**GOLD HILL**  
 MT-KNF-000195  
 Fire perimeter as of  
 09/02/2018 0050 hrs  
 3,788 Acres

- |               |                         |                |                  |                          |                           |                        |                                 |
|---------------|-------------------------|----------------|------------------|--------------------------|---------------------------|------------------------|---------------------------------|
| ✕ Closure     | ● Helispot              | Ⓟ Pump         | ⚠ Value at Risk  | — Uncontrolled Fire Edge | H - Completed Hand Line   | ✕• Proposed Dozer Line | ◻ Wildfire Daily Fire Perimeter |
| ● Other       | ▢ Incident Command Post | Ⓡ Repeater     | ⌋ Division Break | — Completed Line         | — Access or Improved Road | — Planned Fire Line    | ◻ Stimson Lumber                |
| ● Drop Point  | ▢ Lookout               | ▲ Safety Zone  | ★ Landings       | ⌘ Completed Dozer Line   | ⌘ Line Break Completed    | ⊕ Other                | ◻ Other Private                 |
| ⊙ Fire Origin | ☁ Mobile Weather Unit   | Ⓜ Water Source |                  |                          |                           | — Roads                |                                 |

