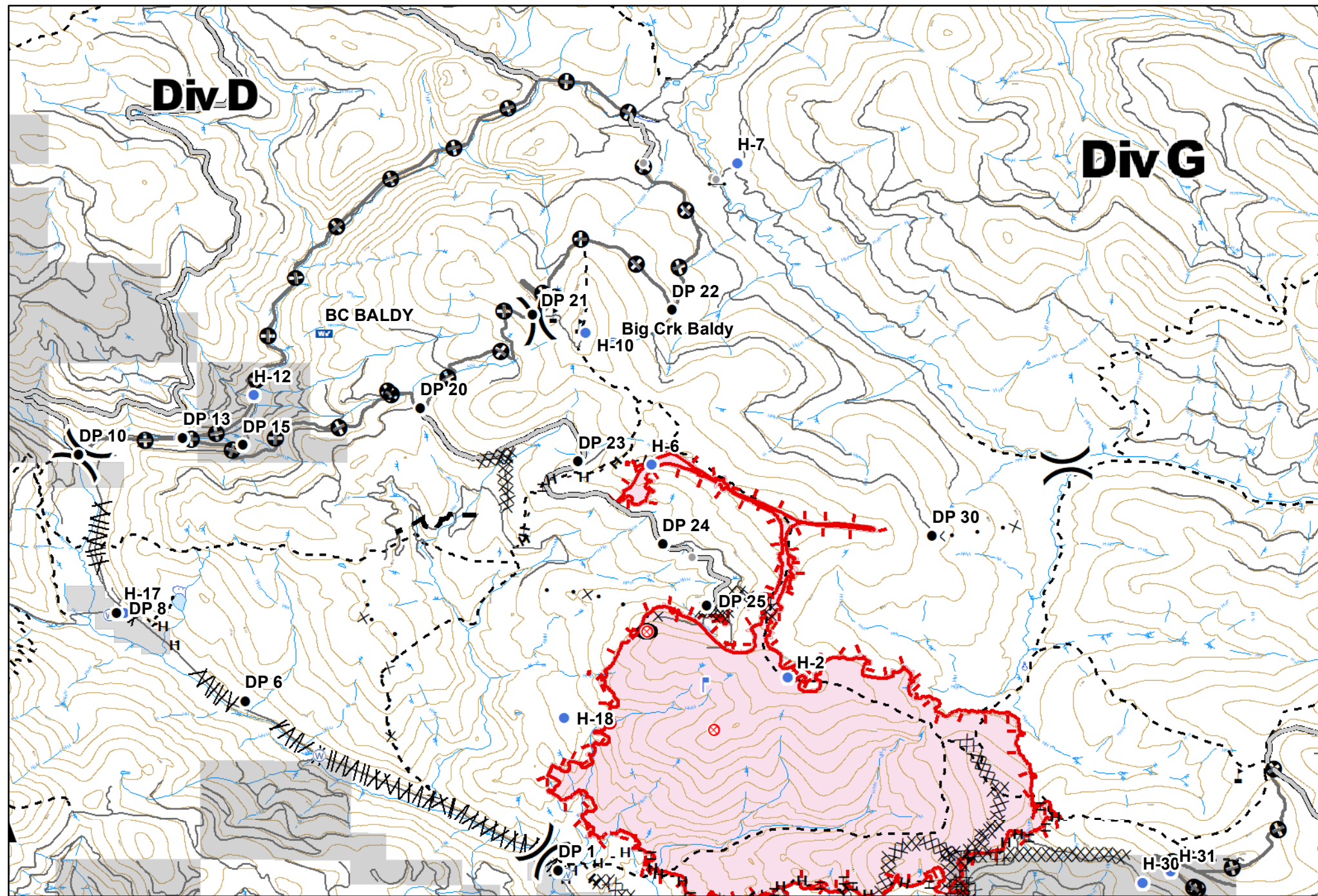


**GOLD HILL**  
 MT-KNF-000195  
 Fire perimeter as of 09/02/2018 0050 hrs  
 3,788 Acres

✕ Closure	● Helispot	Ⓟ Pump	⚡ Value at Risk	— Uncontrolled Fire Edge	R - Road as Completed Line	✕ Proposed Dozer Line	■ Wildfire Daily Fire Perimeter
● Other	Ⓜ Incident Command Post	Ⓜ Repeater	Ⓜ Division Break	— Completed Line	— Access or Improved Road	— Planned Fire Line	■ Stimson Lumber
● Drop Point	Ⓜ Lookout	⚠ Safety Zone	Ⓜ Landings	Ⓜ Completed Dozer Line	Ⓜ Line Break Completed	— Other	■ Other Private
⊙ Fire Origin	Ⓜ Mobile Weather Unit	Ⓜ Water Source		H - Completed Hand Line		— Roads	

0 1 2 Miles

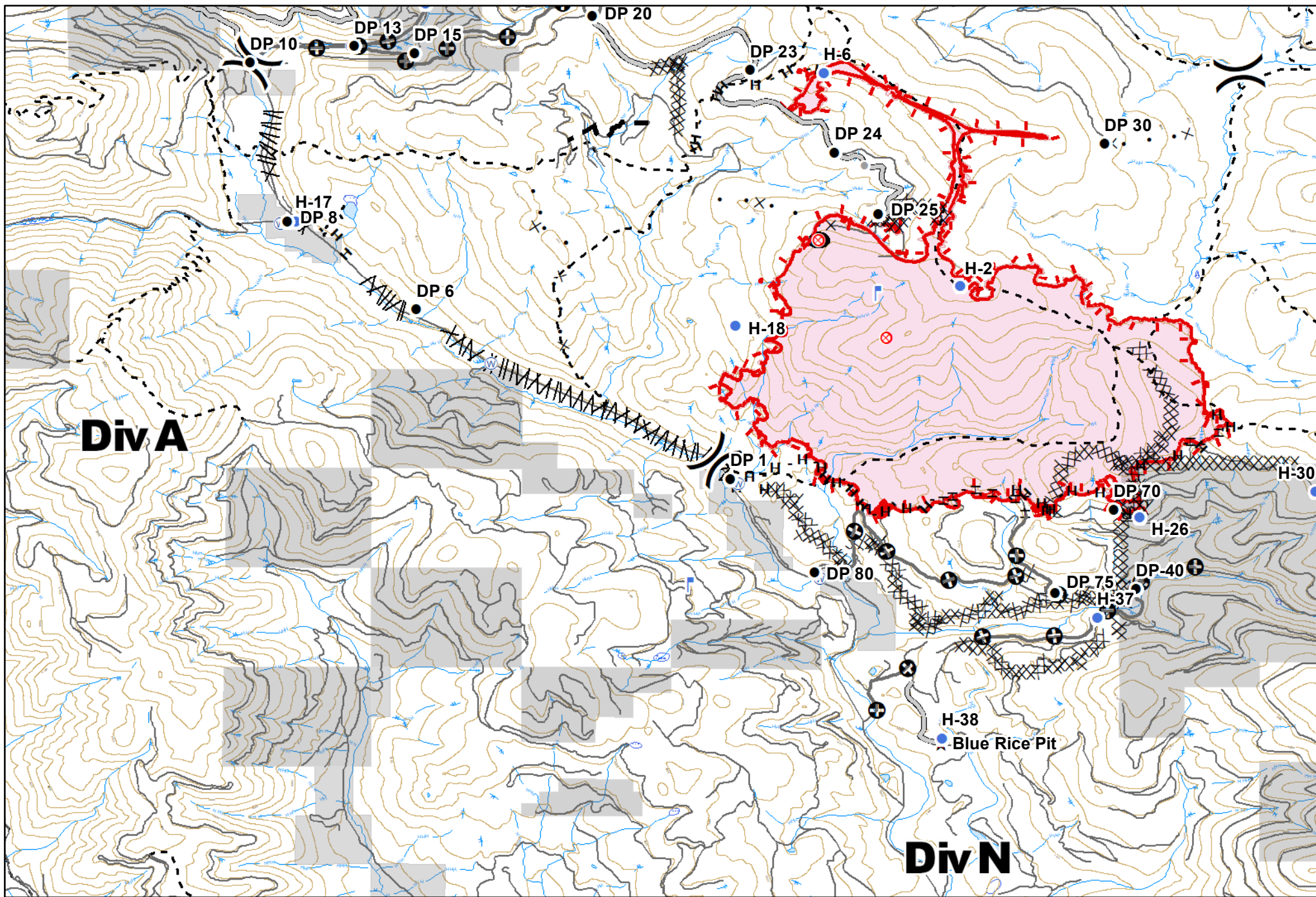




**GOLD HILL**  
 MT-KNF-000195  
 Fire perimeter as of 09/02/2018 0050 hrs  
 3,788 Acres

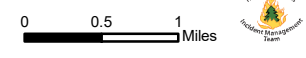
×	Closure	●	Helispot	Ⓟ	Pump	⚡	Value at Risk	—	Uncontrolled Fire Edge	H -	Completed Hand Line	⊗	Proposed Dozer Line	■	Wildfire Daily Fire Perimeter
●	Other	Ⓜ	Incident Command Post	Ⓜ	Repeater	⌘	Division Break	—	Completed Line	—	Access or Improved Road	—	Planned Fire Line	■	Stimson Lumber
●	Drop Point	Ⓜ	Lookout	▲	Safety Zone	⌘	Completed Dozer Line	⌘	Line Break Completed	⊗	Other	■	Other Private		
⊗	Fire Origin	Ⓜ	Mobile Weather Unit	★	Landings			—	Roads						

0 0.5 1 Miles

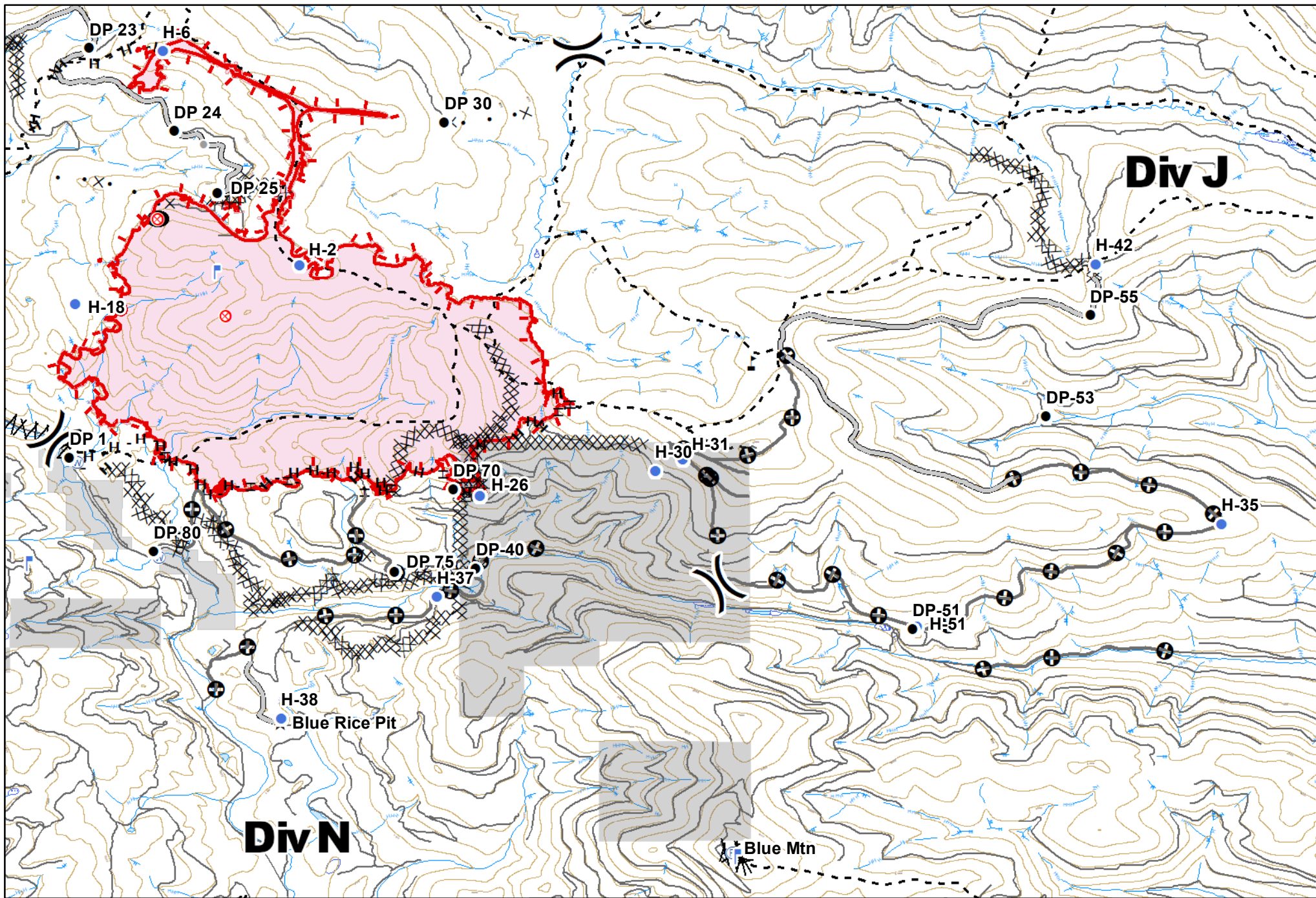


**GOLD HILL**  
 MT-KNF-000195  
 Fire perimeter as of  
 09/02/2018 0050 hrs  
 3,788 Acres

- |   |             |   |                       |   |              |   |                |     |                        |     |                         |   |                     |   |                               |
|---|-------------|---|-----------------------|---|--------------|---|----------------|-----|------------------------|-----|-------------------------|---|---------------------|---|-------------------------------|
| × | Closure     | ● | Helispot              | Ⓟ | Pump         | ⚡ | Value at Risk  | —   | Uncontrolled Fire Edge | R - | Road as Completed Line  | ⊗ | Proposed Dozer Line | ■ | Wildfire Daily Fire Perimeter |
| ● | Other       | Ⓜ | Incident Command Post | Ⓜ | Repeater     | ⌘ | Division Break | —   | Completed Line         | —   | Access or Improved Road | ⊕ | Other               | ■ | Stimson Lumber                |
| ● | Drop Point  | Ⓜ | Lookout               | ▲ | Safety Zone  | ⌘ | Division Break | ⌘   | Completed Dozer Line   | ⌘   | Line Break Completed    | — | Roads               | ■ | Other Private                 |
| ⊙ | Fire Origin | Ⓜ | Mobile Weather Unit   | Ⓜ | Water Source | ★ | Landings       | H - | Completed Hand Line    |     |                         |   |                     |   |                               |







**GOLD HILL**  
 MT-KNF-000195  
 Fire perimeter as of  
 09/02/2018 0050 hrs  
 3,788 Acres

- ✕ Closure
- Other
- Drop Point
- Fire Origin
- Helispot
- ▢ Incident Command Post
- ▢ Lookout
- ▢ Mobile Weather Unit
- Ⓟ Pump
- Ⓟ Repeater
- Ⓟ Safety Zone
- Ⓟ Water Source
- ⚡ Value at Risk
- ⌘ Division Break
- ⌘ Completed Dozer Line

- Uncontrolled Fire Edge
- Completed Line
- ⌘ Completed Dozer Line
- H - Completed Hand Line
- R - Road as Completed Line
- Access or Improved Road
- Roads

- ⌘ Line Break Completed
- ⌘ Proposed Dozer Line
- ⊕ Other
- ▢ Wildfire Daily Fire Perimeter
- ▢ Stimson Lumber
- ▢ Other Private

