

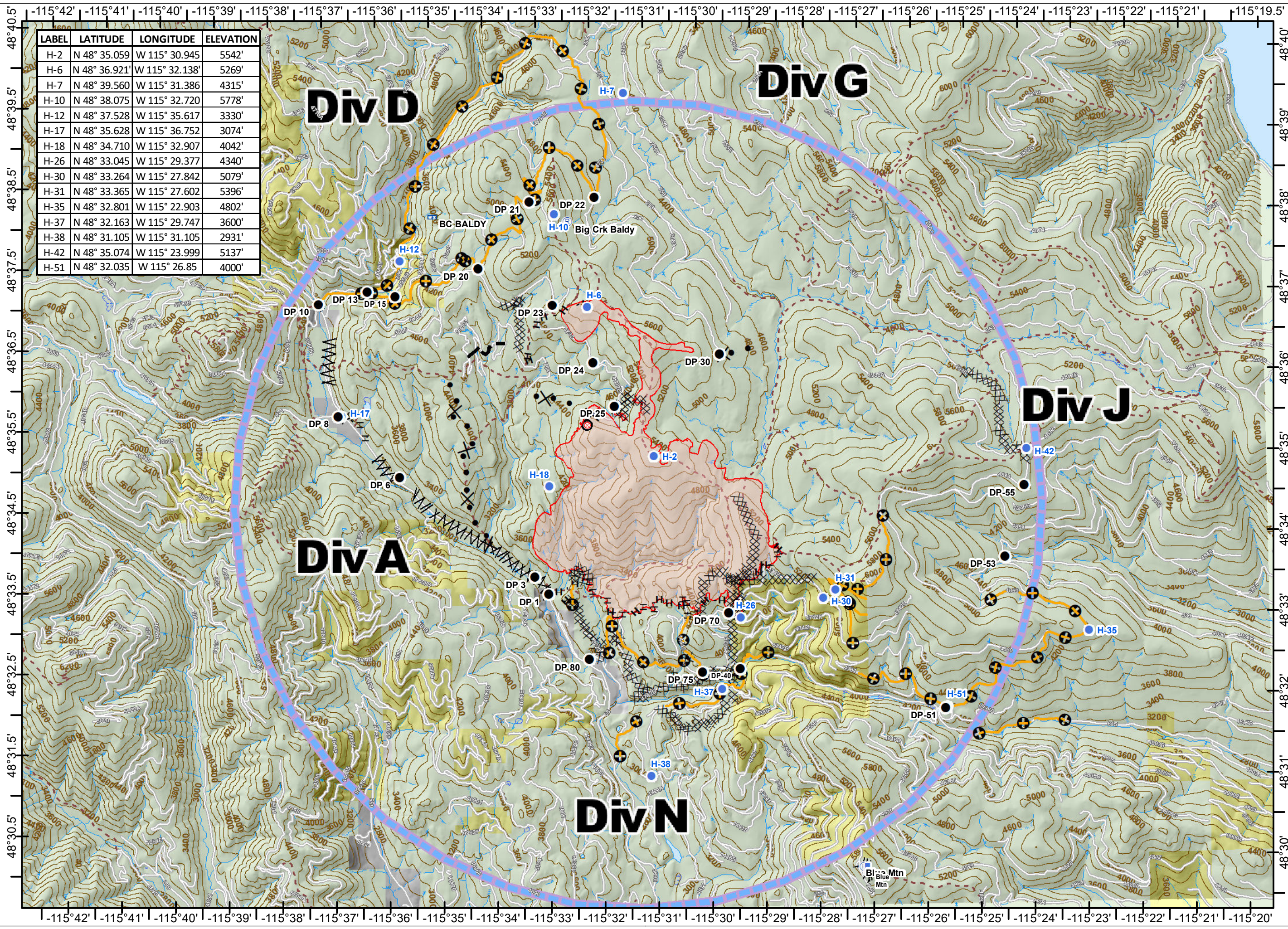
Air Operations

09/06/2018

- ✕ Closure
-) Division Break
- Drop Point
- ⊗ Fire Origin
- Helispot
- IR Isolated Heat Source
- 👁 Lookout
- 🚚 Mobile Weather Unit
- Ⓟ Pump
- Ⓡ Repeater
- ⚠ Safety Zone
- ⚠ Value at Risk
- 🌊 Water Source

- XXXXX Completed Dozer Line
- H - H Completed Hand Line
- Completed Line
- 〰 Line Break Completed
- ⊕ Other
- Planned Fire Line
- ⊗ Proposed Dozer Line
- Temporary Flight Restriction
- Uncontrolled Fire Edge

LABEL	LATITUDE	LONGITUDE	ELEVATION
H-2	N 48° 35.059	W 115° 30.945	5542'
H-6	N 48° 36.921	W 115° 32.138	5269'
H-7	N 48° 39.560	W 115° 31.386	4315'
H-10	N 48° 38.075	W 115° 32.720	5778'
H-12	N 48° 37.528	W 115° 35.617	3330'
H-17	N 48° 35.628	W 115° 36.752	3074'
H-18	N 48° 34.710	W 115° 32.907	4042'
H-26	N 48° 33.045	W 115° 29.377	4340'
H-30	N 48° 33.264	W 115° 27.842	5079'
H-31	N 48° 33.365	W 115° 27.602	5396'
H-35	N 48° 32.801	W 115° 22.903	4802'
H-37	N 48° 32.163	W 115° 29.747	3600'
H-38	N 48° 31.105	W 115° 31.105	2931'
H-42	N 48° 35.074	W 115° 23.999	5137'
H-51	N 48° 32.035	W 115° 26.85	4000'



GOLD HILL
MT-KNF-000195

Fire perimeter as of
 09/02/2018 0050 hrs
 3,788 Acres

