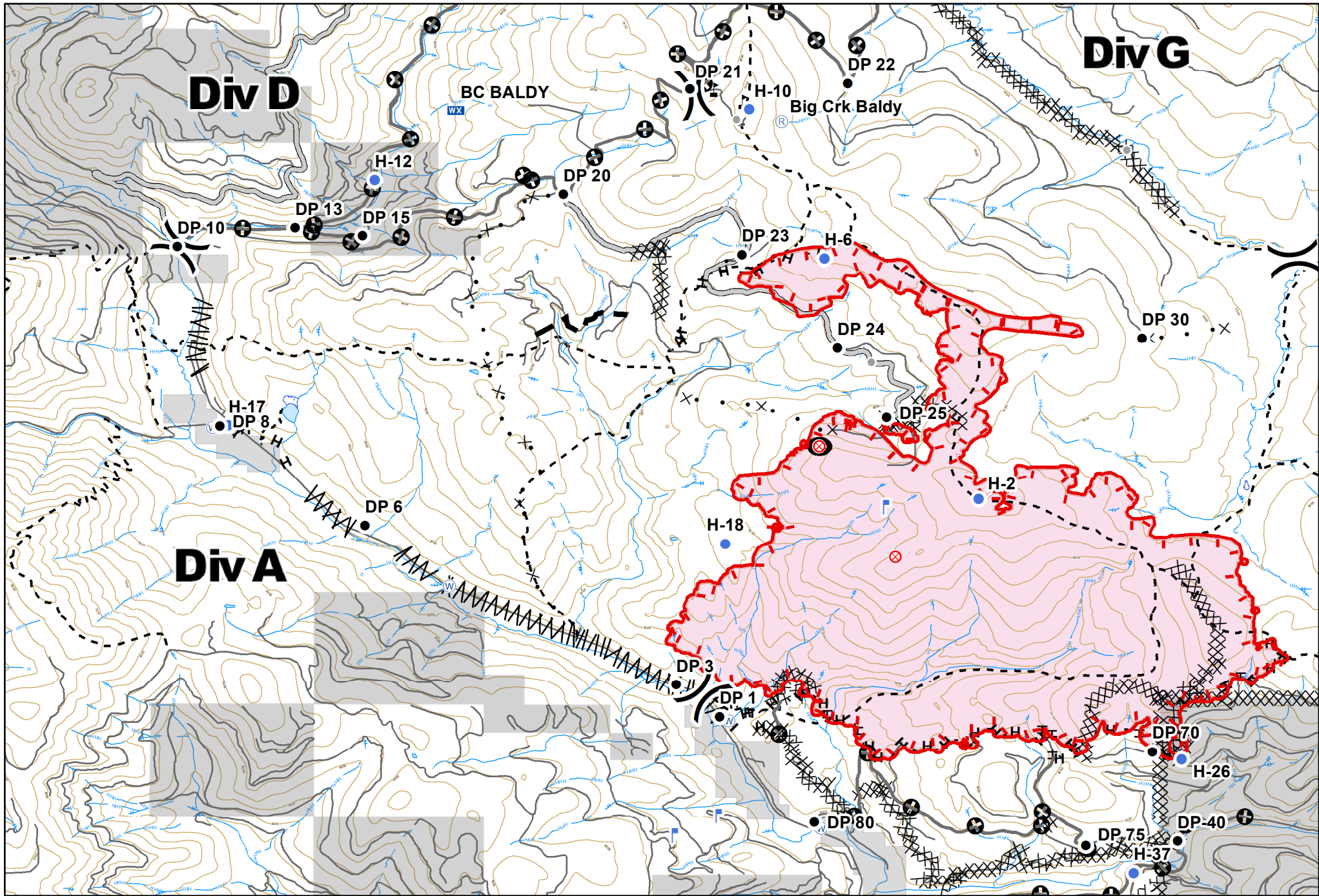


**GOLD HILL**  
 MT-KNF-000195  
 Fire perimeter as of 09/06/2018 AM  
 4,764 Acres

✕ Closure	● Helispot	Ⓟ Pump	⚠ Value at Risk	— Uncontrolled Fire Edge	R - Road as Completed Line	✕ Proposed Dozer Line	◻ Wildfire Daily Fire Perimeter
● Other	▢ Incident Command Post	Ⓡ Repeater	) Division Break	— Completed Line	— Access or Improved Road	— Planned Fire Line	▒ Stimson Lumber
● Drop Point	▢ Lookout	⚠ Safety Zone	★ Landings	✕ Completed Dozer Line	— Line Break Completed	— Other	▒ Other Private
● Fire Origin	☁ Mobile Weather Unit	Ⓜ Water Source		H - Completed Hand Line			

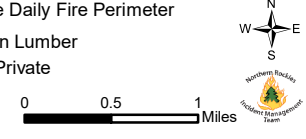
0 1 2 Miles

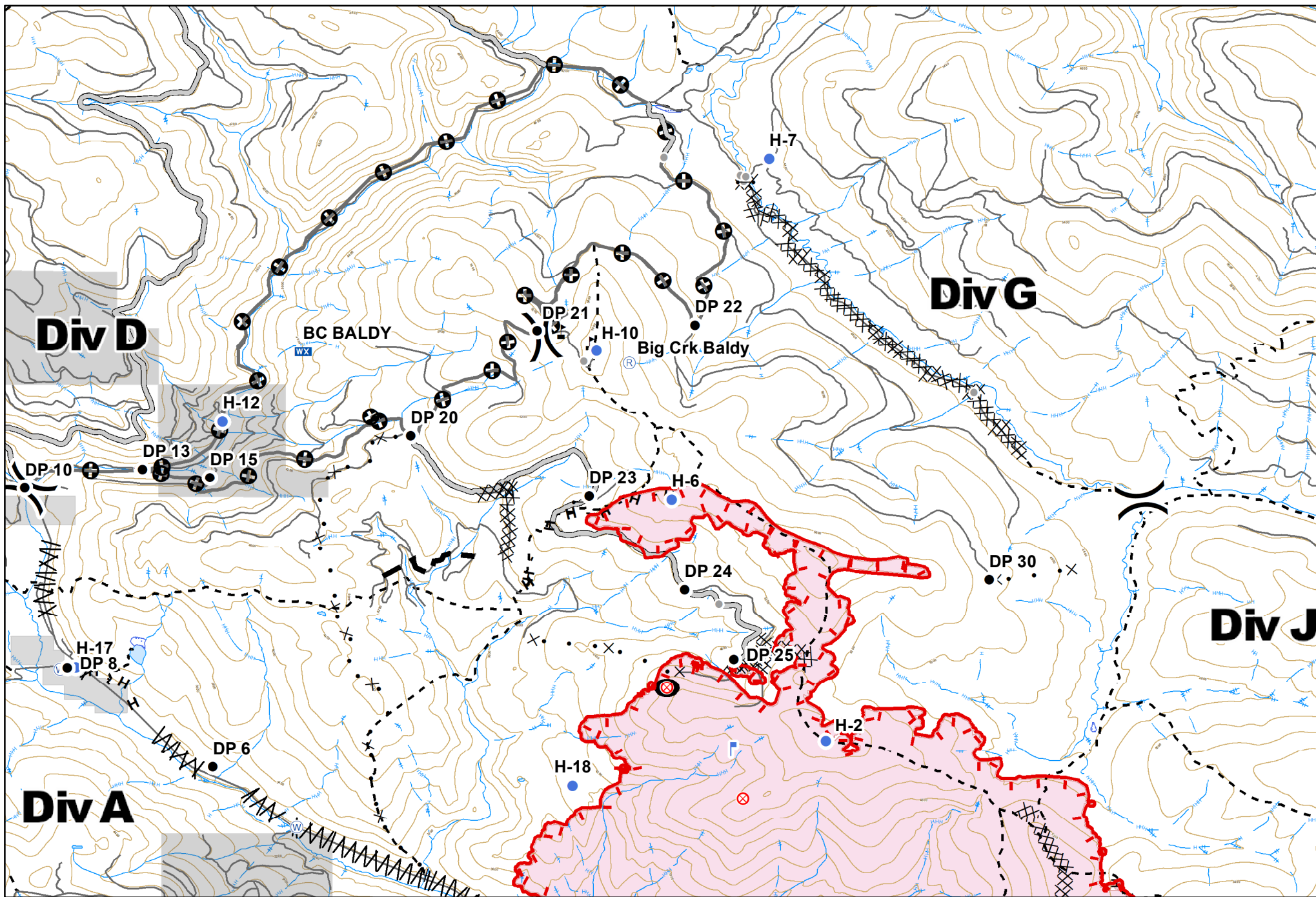




**GOLD HILL**  
 MT-KNF-000195  
 Fire perimeter as of  
 09/06/2018 AM  
 4,764 Acres

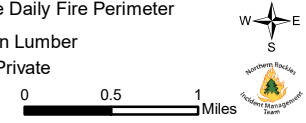
- |               |                         |                |                        |                          |                            |                       |                                 |
|---------------|-------------------------|----------------|------------------------|--------------------------|----------------------------|-----------------------|---------------------------------|
| ✕ Closure     | ● Helispot              | Ⓟ Pump         | ⚠ Value at Risk        | — Uncontrolled Fire Edge | R - Road as Completed Line | ✕ Proposed Dozer Line | ▭ Wildfire Daily Fire Perimeter |
| ● Other       | ▭ Incident Command Post | Ⓡ Repeater     | ⎓ Division Break       | — Completed Line         | — Access or Improved Road  | — Planned Fire Line   | ▭ Stimson Lumber                |
| ● Drop Point  | ▭ Lookout               | ⚠ Safety Zone  | ⎓ Completed Dozer Line | — Completed Hand Line    | ⎓ Line Break Completed     | — Roads               | ▭ Other Private                 |
| ⊙ Fire Origin | Ⓜ Mobile Weather Unit   | Ⓜ Water Source | ★ Landings             |                          |                            |                       |                                 |



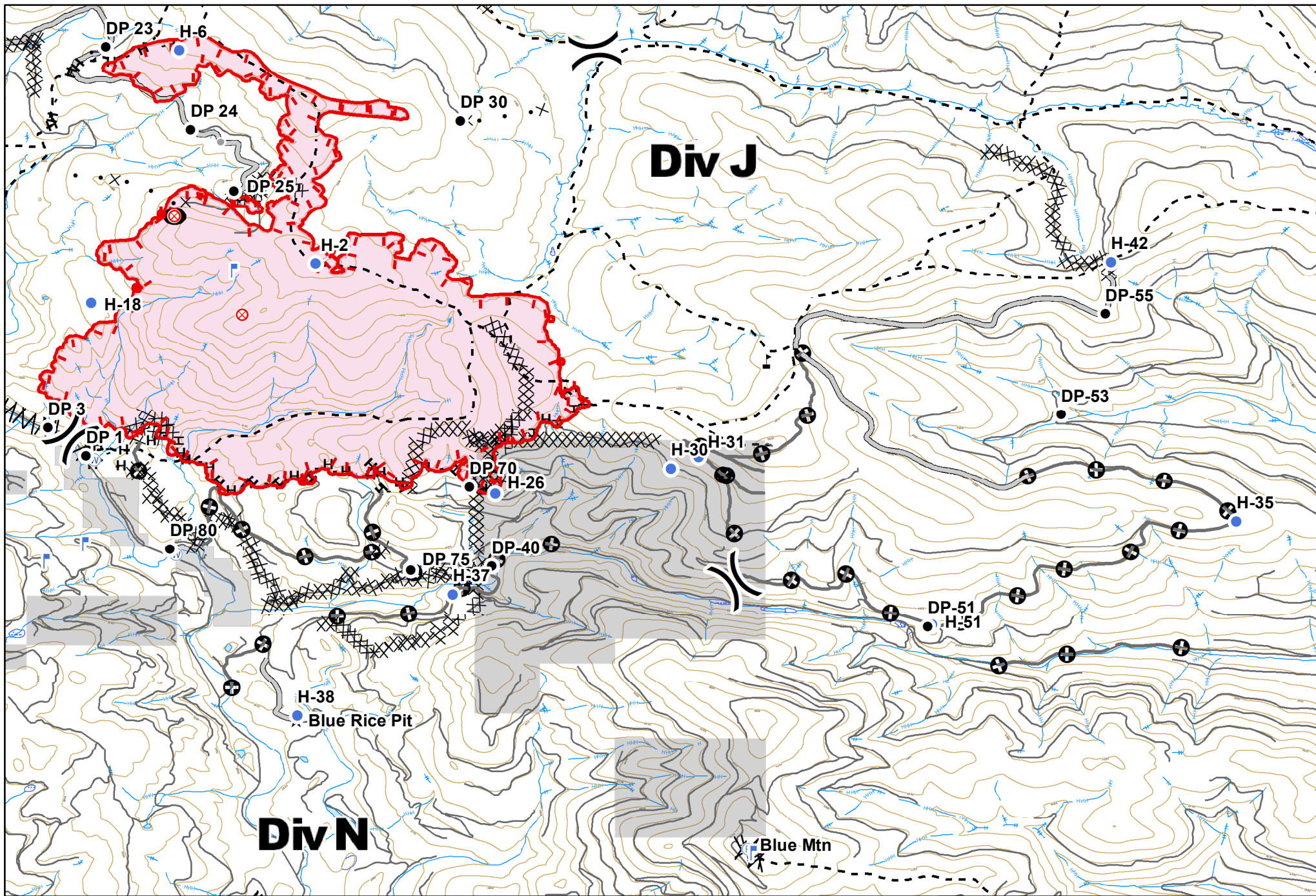


**GOLD HILL**  
 MT-KNF-000195  
 Fire perimeter as of  
 09/06/2018 AM  
 4,764 Acres

- |   |             |   |                       |   |              |   |                |   |                        |     |                         |   |                     |   |                               |
|---|-------------|---|-----------------------|---|--------------|---|----------------|---|------------------------|-----|-------------------------|---|---------------------|---|-------------------------------|
| × | Closure     | ● | Helispot              | Ⓟ | Pump         | ⚠ | Value at Risk  | — | Uncontrolled Fire Edge | H - | Completed Hand Line     | ⊗ | Proposed Dozer Line | ■ | Wildfire Daily Fire Perimeter |
| ● | Other       | Ⓜ | Incident Command Post | Ⓡ | Repeater     | ⌘ | Division Break | — | Completed Line         | —   | Access or Improved Road | — | Planned Fire Line   | ■ | Stimson Lumber                |
| ● | Drop Point  | Ⓜ | Lookout               | ⚠ | Safety Zone  | Ⓜ | Landings       | ⊗ | Completed Dozer Line   | —   | Line Break Completed    | ⊗ | Other               | ■ | Other Private                 |
| ⊗ | Fire Origin | Ⓜ | Mobile Weather Unit   | Ⓜ | Water Source | Ⓜ | Landings       | — | Roads                  |     |                         |   |                     |   |                               |







**GOLD HILL**  
 MT-KNF-000195  
 Fire perimeter as of  
 09/06/2018 AM  
 4,764 Acres

- ✕ Closure
- Other
- Drop Point
- Fire Origin
- Helispot
- ▢ Incident Command Post
- ▢ Lookout
- ▢ Mobile Weather Unit
- Ⓟ Pump
- Ⓡ Repeater
- ⚠ Safety Zone
- Ⓜ Water Source
- ⚡ Value at Risk
- ⌋ Division Break
- Ⓡ Landings

- Uncontrolled Fire Edge
- Completed Line
- ⓧ Completed Dozer Line
- H - Completed Hand Line
- R - Road as Completed Line
- Access or Improved Road
- Roads

- Ⓜ Line Break Completed
- ✕ Proposed Dozer Line
- ⊕ Other
- Roads
- ▭ Wildfire Daily Fire Perimeter
- ▭ Stimson Lumber
- ▭ Other Private

