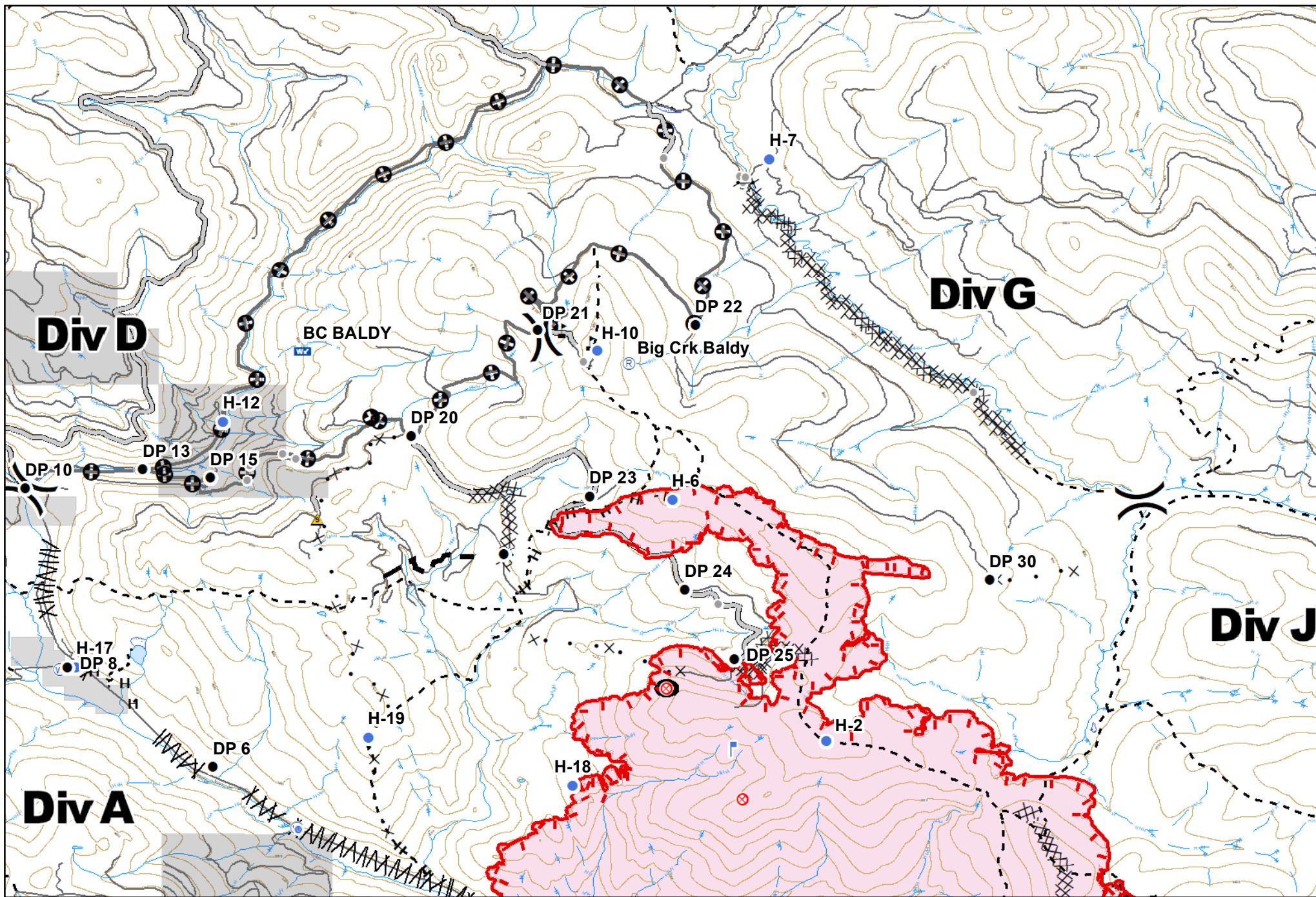


GOLD HILL
 MT-KNF-000195
 Fire perimeter as of
 09/07/2018 @ 2200 hrs
 5,372 Acres

- | | | | | | | |
|---------------|-------------------------|----------------|------------------|--------------------------|---------------------------|---------------------------------|
| ✕ Closure | • Helispot | Ⓟ Pump | ⚠ Value at Risk | — Uncontrolled Fire Edge | ⓧ Proposed Dozer Line | ▭ Wildfire Daily Fire Perimeter |
| • Other | Ⓜ Incident Command Post | Ⓡ Repeater | ⓧ Division Break | — Completed Line | — Planned Fire Line | ▭ Stimson Lumber |
| • Drop Point | Ⓜ Lookout | ⚠ Safety Zone | ★ Landings | ⓧ Completed Dozer Line | — Access or Improved Road | ▭ Other Private |
| • Fire Origin | Ⓜ Mobile Weather Unit | Ⓡ Water Source | | Ⓜ Line Break Completed | — Roads | |
| | | | | H - Completed Hand Line | | |

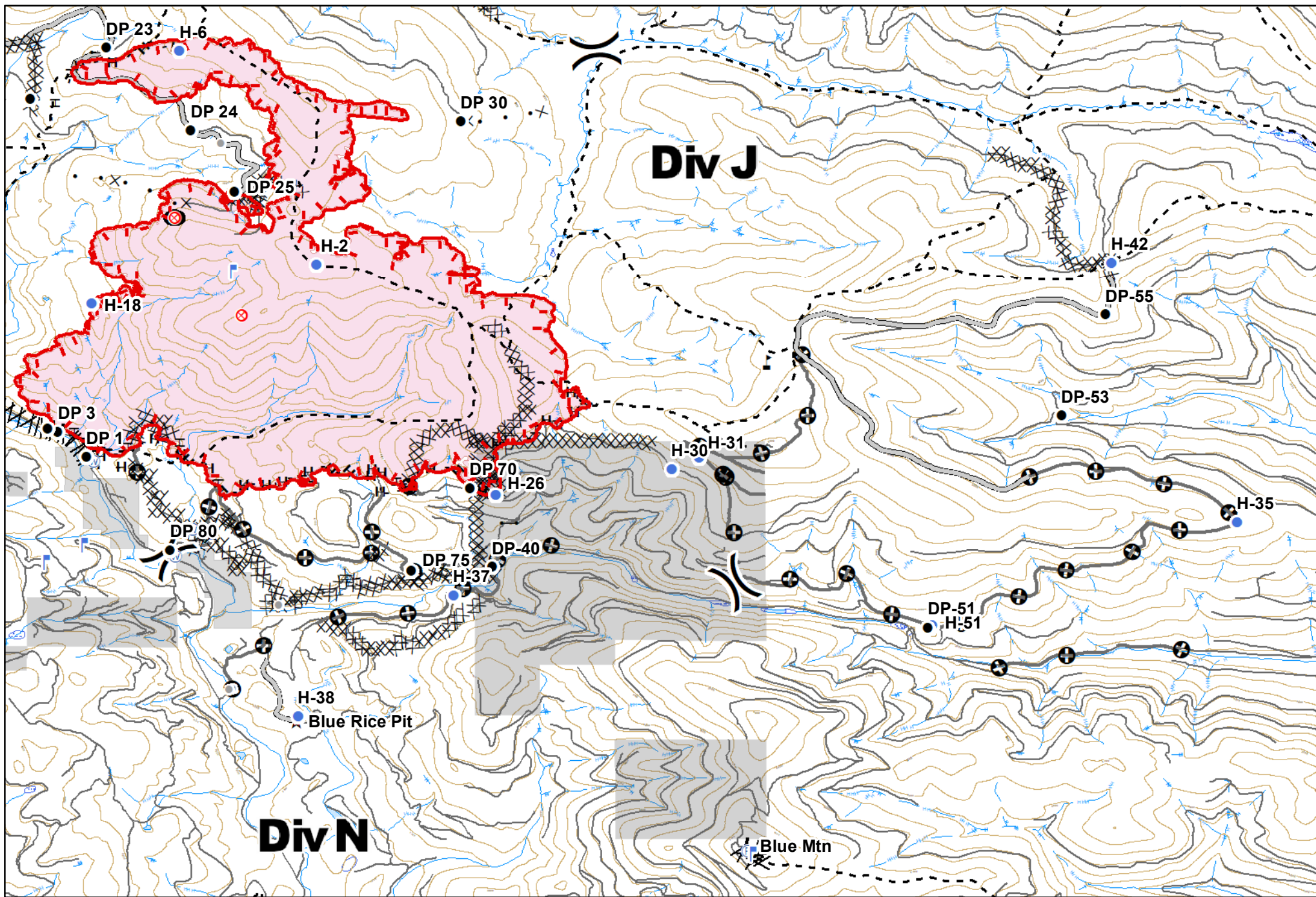
0 1 2 Miles



GOLD HILL
 MT-KNF-000195
 Fire perimeter as of
 09/07/2018 @ 2200 hrs
 5,372 Acres

- | | | | | | | | |
|---------------|-------------------------|----------------|------------------|--------------------------|---------------------------|------------------------|---------------------------------|
| ✕ Closure | ● Helispot | Ⓟ Pump | ⚠ Value at Risk | 🔴 Uncontrolled Fire Edge | H - Completed Hand Line | ✕• Proposed Dozer Line | 🟡 Wildfire Daily Fire Perimeter |
| ● Other | 🏠 Incident Command Post | Ⓜ Repeater | ⌘ Division Break | 🟤 Completed Line | 🛤 Access or Improved Road | 🟤 Planned Fire Line | 🟤 Stimson Lumber |
| ● Drop Point | 🏠 Lookout | 🚩 Safety Zone | ★ Landings | 🟤 Completed Dozer Line | 🏠 Line Break Completed | 🟤 Other | 🟤 Other Private |
| 🔴 Fire Origin | 🚗 Mobile Weather Unit | 🌊 Water Source | | 🛤 Roads | | | |





GOLD HILL
 MT-KNF-000195
 Fire perimeter as of
 09/07/2018 @ 2200 hrs
 5,372 Acres

- | | | | | | | | |
|---------------|-------------------------|----------------|------------------|--------------------------|----------------------------|------------------------|---------------------------------|
| ✕ Closure | ● Helispot | Ⓟ Pump | ⚡ Value at Risk | — Uncontrolled Fire Edge | H - Completed Hand Line | ⌄ Line Break Completed | ■ Wildfire Daily Fire Perimeter |
| ● Other | Ⓜ Incident Command Post | Ⓡ Repeater | ⌘ Division Break | — Completed Line | R - Road as Completed Line | ✕ Proposed Dozer Line | ■ Stimson Lumber |
| ● Drop Point | Ⓛ Lookout | ⚠ Safety Zone | ★ Landings | ⊗ Completed Dozer Line | — Access or Improved Road | — Roads | ■ Other Private |
| ⦿ Fire Origin | Ⓜ Mobile Weather Unit | Ⓜ Water Source | | | | | |

0 0.5 1 Miles