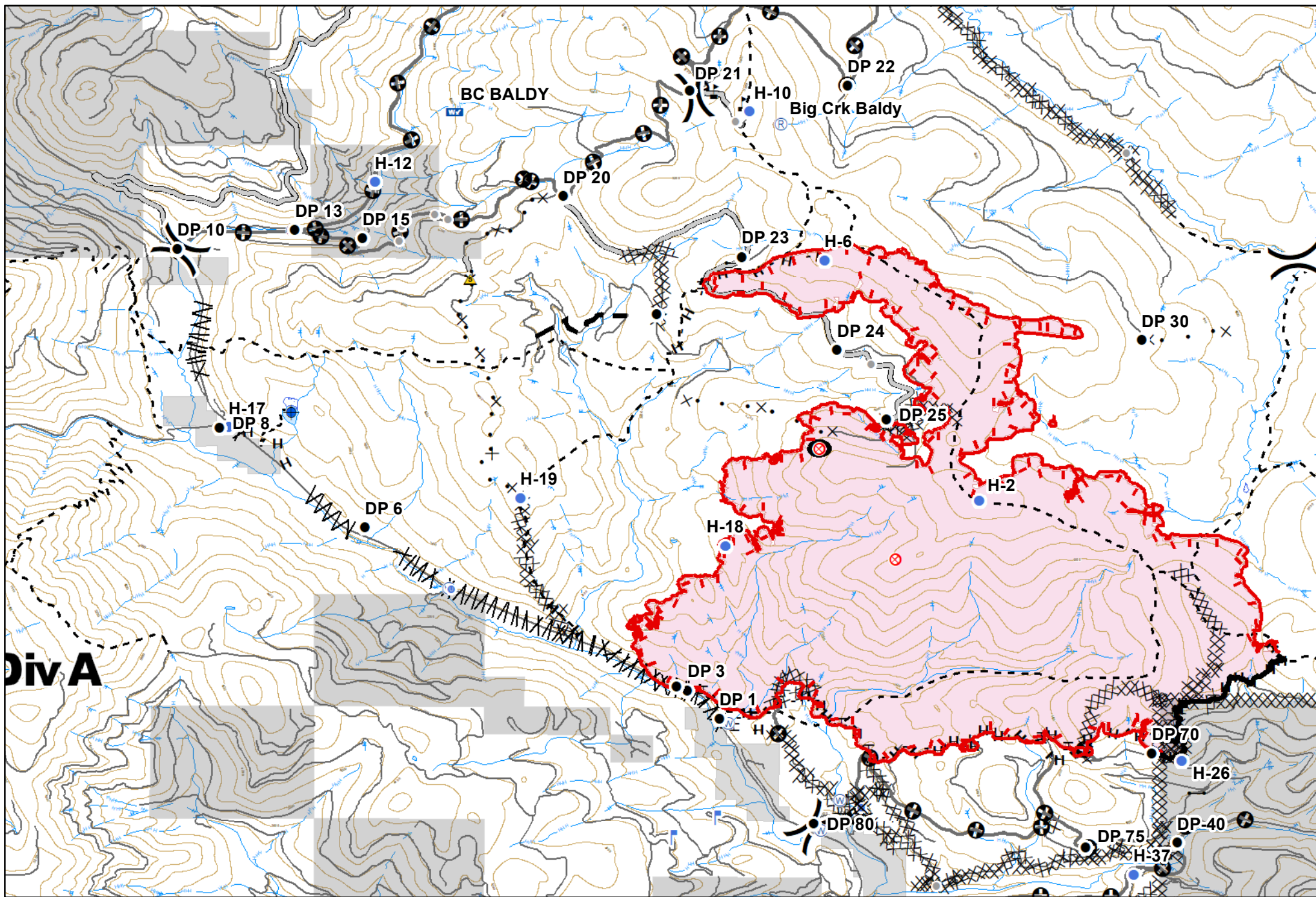


GOLD HILL
 MT-KNF-000195
 Fire perimeter as of
 09/08/2018 @ 2215 hrs
 5,521 Acres

✕ Closure	● Helispot	Ⓟ Pump	⚠ Value at Risk	— Uncontrolled Fire Edge	ⓧ Proposed Dozer Line	■ Wildfire Daily Fire Perimeter
● Other	Ⓜ Incident Command Post	Ⓜ Repeater	Ⓜ Division Break	— Completed Line	— Planned Fire Line	■ Stimson Lumber
● Drop Point	Ⓜ Lookout	⚠ Safety Zone	★ Landings	ⓧ Completed Dozer Line	— Access or Improved Road	■ Other Private
● Fire Origin	Ⓜ Mobile Weather Unit	Ⓜ Water Source	— H - Completed Hand Line	Ⓜ Line Break Completed	— Roads	

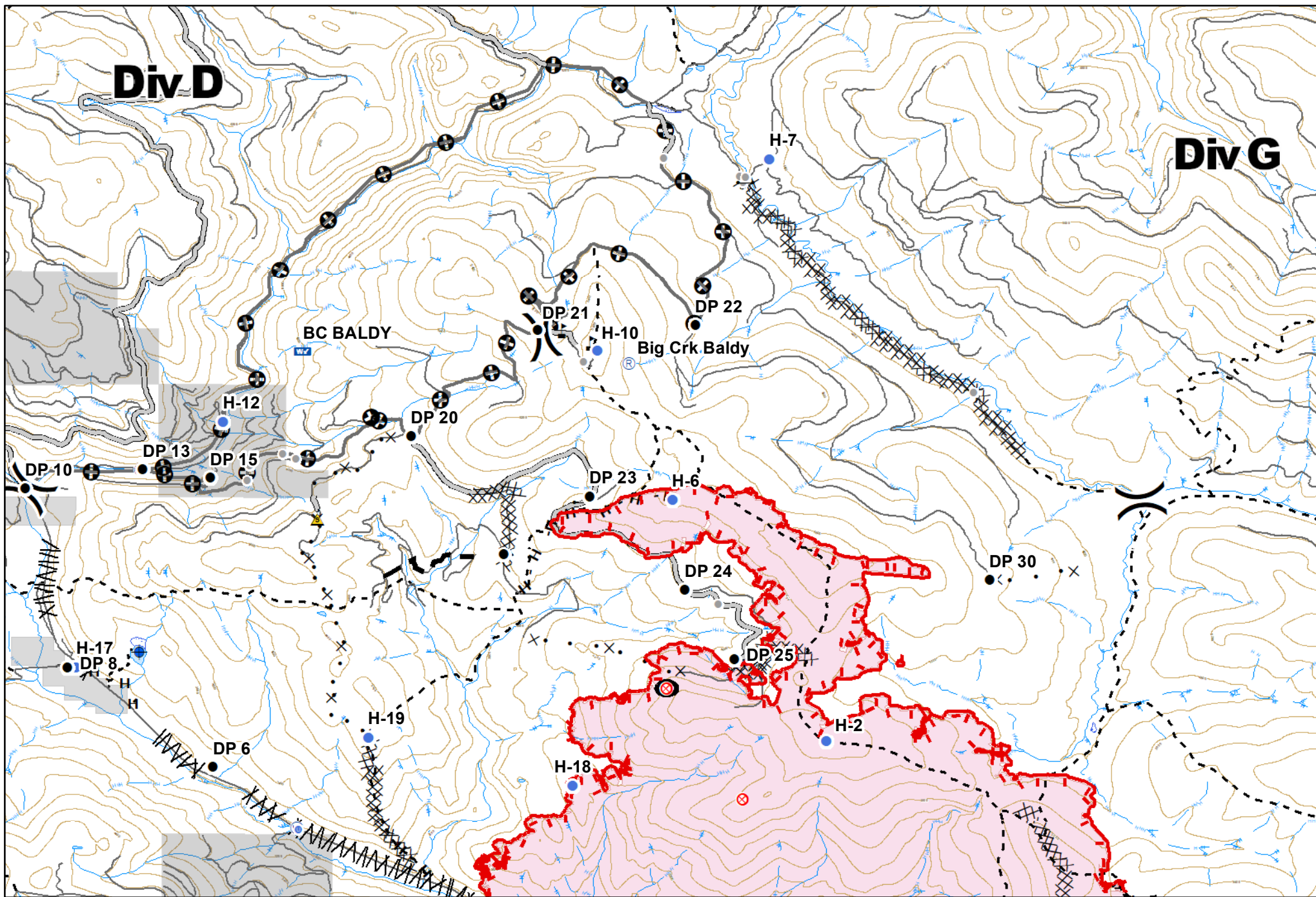
0 1 2 Miles



GOLD HILL
 MT-KNF-000195
 Fire perimeter as of
 09/08/2018 @ 2215 hrs
 5,521 Acres

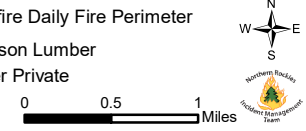
- | | | | | | | |
|---------------|-------------------------|----------------|------------------|----------------------------|---------------------------|---------------------------------|
| ✕ Closure | • Helispot | Ⓟ Pump | ⚡ Value at Risk | — Uncontrolled Fire Edge | ✕ Proposed Dozer Line | ▭ Wildfire Daily Fire Perimeter |
| • Other | Ⓜ Incident Command Post | Ⓡ Repeater | ⌋ Division Break | — Completed Line | — Planned Fire Line | ▭ Stimson Lumber |
| • Drop Point | Ⓜ Lookout | ⚠ Safety Zone | ⌋ Landings | ⌘ Completed Dozer Line | — Access or Improved Road | ▭ Other Private |
| • Fire Origin | Ⓜ Mobile Weather Unit | Ⓜ Water Source | | Ⓜ Line Break Completed | — Roads | |
| | | | | H - Completed Hand Line | | |
| | | | | R - Road as Completed Line | | |

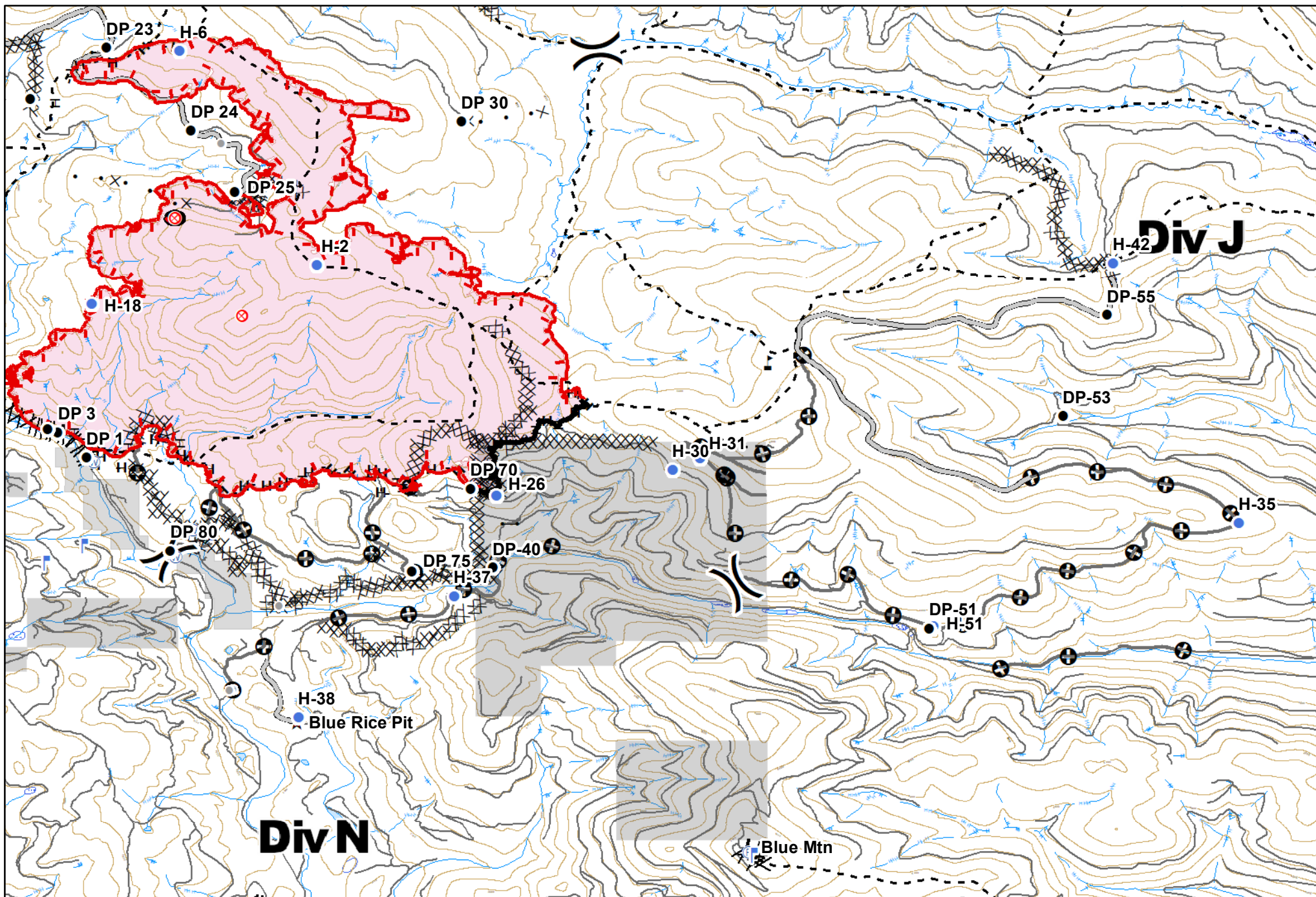




GOLD HILL
 MT-KNF-000195
 Fire perimeter as of
 09/08/2018 @ 2215 hrs
 5,521 Acres

- | | | | | | | | |
|---------------|-------------------------|----------------|------------------|--------------------------|---------------------------|------------------------|---------------------------------|
| X Closure | • Helispot | Ⓟ Pump | ⚠ Value at Risk | 🔴 Uncontrolled Fire Edge | H - Completed Hand Line | X• Proposed Dozer Line | 🌸 Wildfire Daily Fire Perimeter |
| • Other | 🏠 Incident Command Post | Ⓜ Repeater | ⌋ Division Break | 🟩 Completed Line | 🛤 Access or Improved Road | 🟩 Planned Fire Line | 🟩 Stimson Lumber |
| ● Drop Point | 🏔 Lookout | ⚠ Safety Zone | ★ Landings | 🟩 Completed Dozer Line | 🛤 Line Break Completed | 🟩 Other | 🟩 Other Private |
| 🔴 Fire Origin | 🚗 Mobile Weather Unit | 🌊 Water Source | | — Roads | | | |





GOLD HILL
 MT-KNF-000195
 Fire perimeter as of
 09/08/2018 @ 2215 hrs
 5,521 Acres

- | | | | | | | | |
|---------------|-------------------------|----------------|------------------|--------------------------|----------------------------|---------------------------|---------------------------------|
| ✕ Closure | ● Helispot | Ⓟ Pump | ⚡ Value at Risk | — Uncontrolled Fire Edge | H - Completed Hand Line | Ⓜ Line Break Completed | ▭ Wildfire Daily Fire Perimeter |
| ● Other | Ⓜ Incident Command Post | Ⓡ Repeater | Ⓝ Division Break | — Completed Line | ✕ Proposed Dozer Line | ✕ Other | ▭ Stimson Lumber |
| ● Drop Point | Ⓜ Lookout | ⚠ Safety Zone | ★ Landings | Ⓝ Completed Dozer Line | R - Road as Completed Line | — Access or Improved Road | ▭ Other Private |
| ● Fire Origin | Ⓜ Mobile Weather Unit | Ⓡ Water Source | | | — Roads | | |

