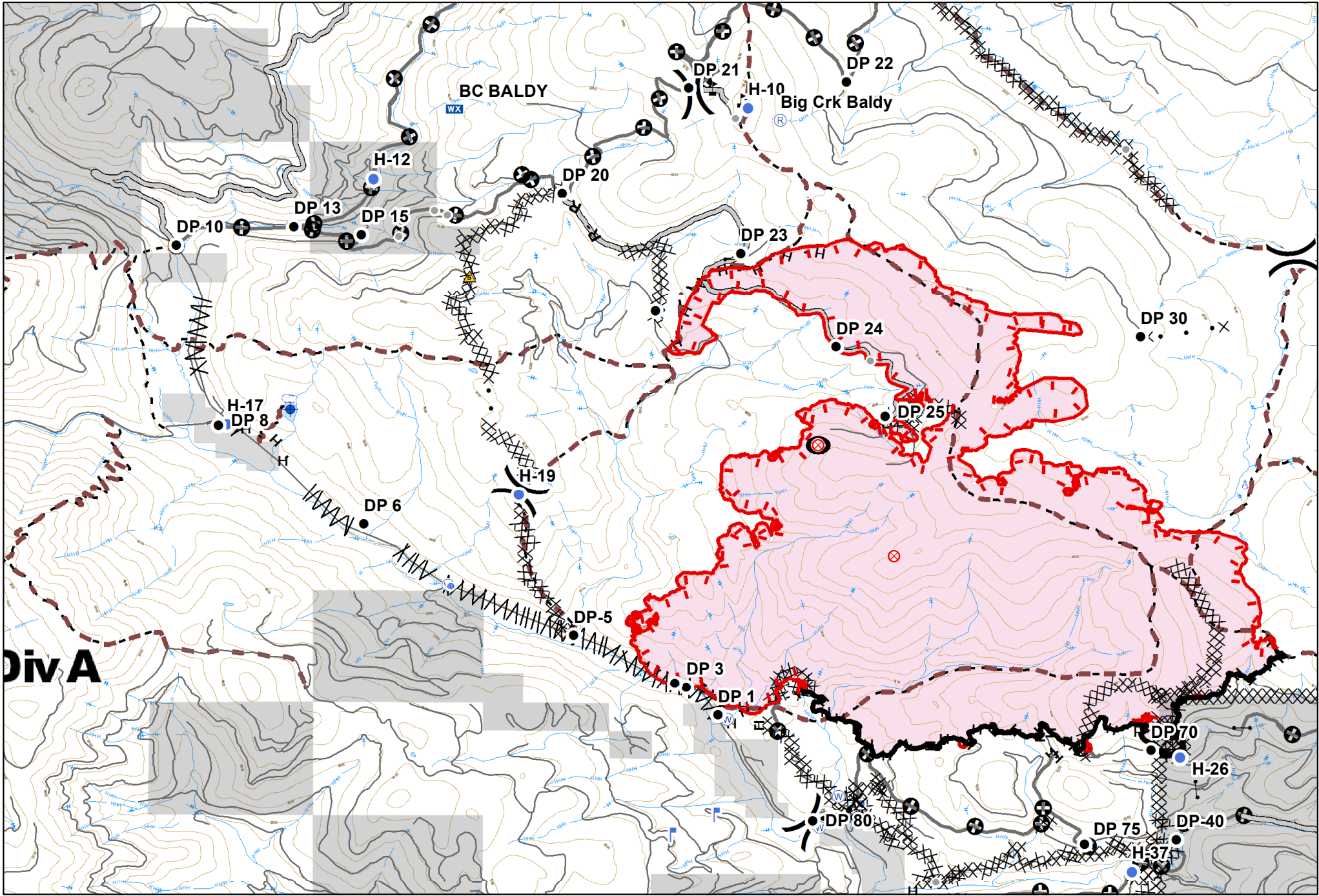


GOLD HILL
 MT-KNF-000195
 Fire perimeter as of
 09/09/2018 @ 2200 hrs
 5,830 Acres

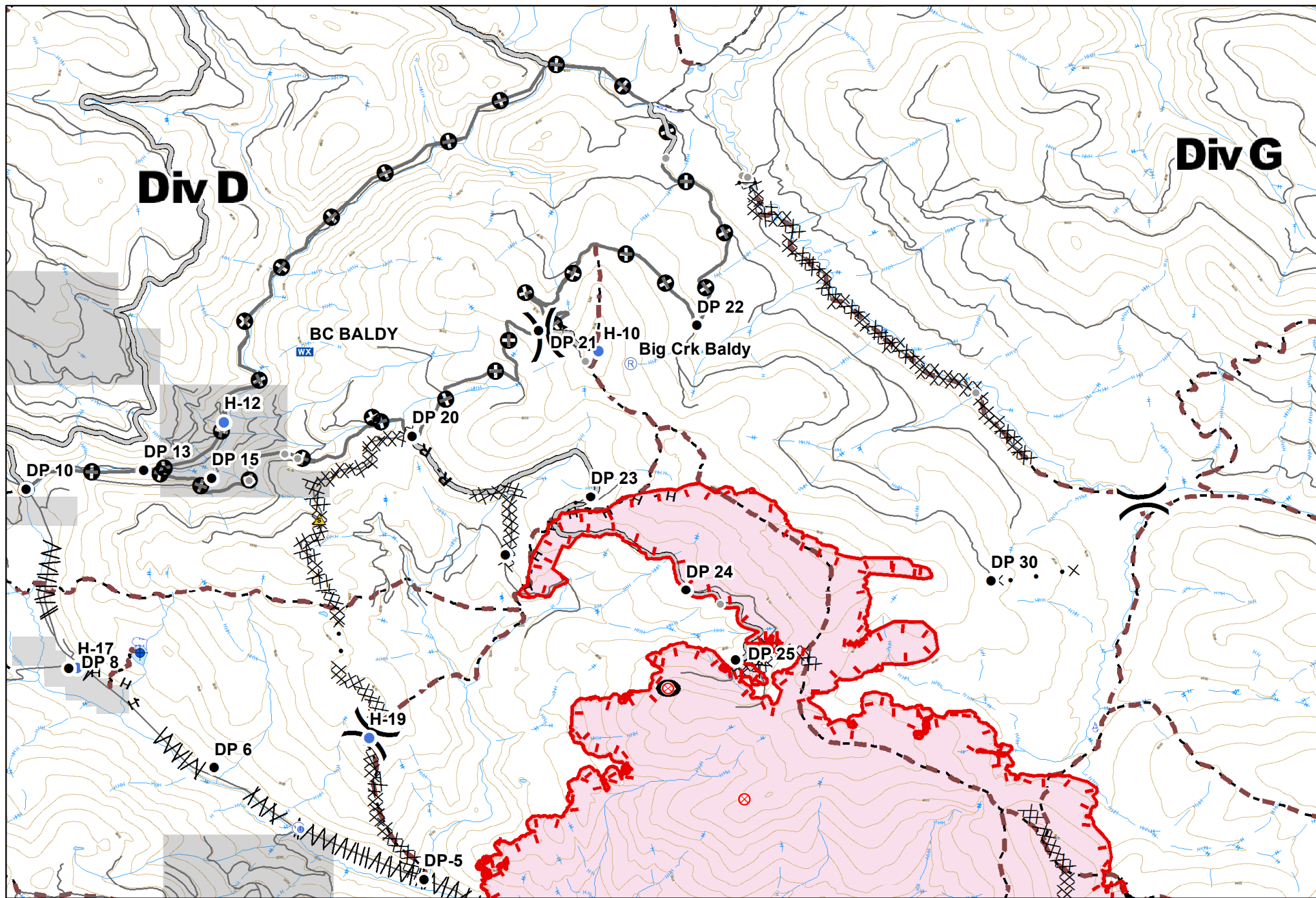
- | | | | | | | | | | |
|---------------|-------------------------|----------------|------------------------|---------------------------|-------------------------|------------------------|------------------|---------------------------------|--------------------|
| ✕ Closure | ● Helispot | Ⓟ Pump | ⚠ Value at Risk | 🔴 Uncontrolled Fire Edge | H - Completed Hand Line | ⚡ Line Break Completed | 🟤 Existing Trail | 🟡 Wildfire Daily Fire Perimeter | 🧭 N
S
E
W |
| ● Other | 🏠 Incident Command Post | Ⓡ Repeater | ⏏ Division Break | 🟢 Completed Line | ⚡ Proposed Dozer Line | ⚡ Proposed Dozer Line | 🛣 Roads | 🟤 Stimson Lumber | 0 1 2 Miles |
| ● Drop Point | 🔍 Lookout | 🚧 Safety Zone | ⚡ Completed Dozer Line | Ⓡ Road as Completed Line | ⊕ Other | ⊕ Other | 🟤 Other Private | | |
| 🔴 Fire Origin | 📶 Mobile Weather Unit | 🌊 Water Source | 🚧 Landings | 🛣 Access or Improved Road | | | | | |



GOLD HILL
 MT-KNF-000195
 Fire perimeter as of
 09/09/2018 @ 2200 hrs
 5,830 Acres

✕ Closure	● Helispot	Ⓟ Pump	⚠ Value at Risk	🔴 Uncontrolled Fire Edge	H - Completed Hand Line	⚡ Line Break Completed	🟤 Existing Trail	🟡 Wildfire Daily Fire Perimeter	N E S W
● Other	📍 Incident Command Post	Ⓡ Repeater	⌘ Division Break	🟤 Completed Line	⚡ Proposed Dozer Line	🟤 Roads	🟡 Stimson Lumber	0 0.5 1 Miles	
● Drop Point	📡 Lookout	🚧 Safety Zone	★ Landings	⚡ Completed Dozer Line	Ⓡ Road as Completed Line	🟤 Access or Improved Road	🟡 Other Private		
🔴 Fire Origin	📡 Mobile Weather Unit	🌊 Water Source							



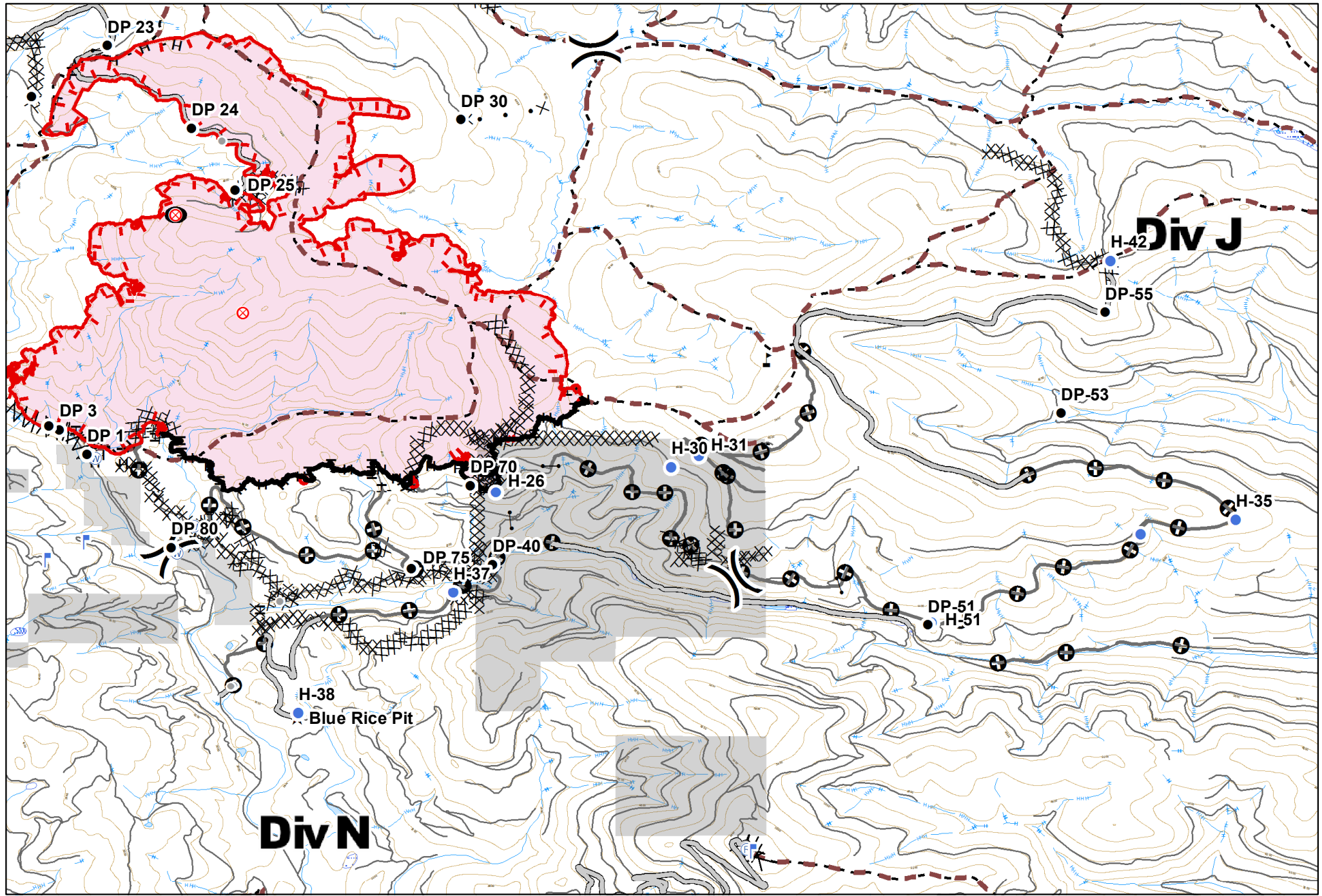


GOLD HILL
 MT-KNF-000195

Fire perimeter as of
 09/09/2018 @ 2200 hrs
 5,830 Acres

- | | | | | | | | | |
|---------------|-------------------------|----------------|------------------|--------------------------|----------------------------|---------------------------|------------------|---------------------------------|
| ✕ Closure | ● Helispot | Ⓟ Pump | ⚠ Value at Risk | 🔴 Uncontrolled Fire Edge | H - Completed Hand Line | ⚡ Line Break Completed | 🟤 Existing Trail | 🟡 Wildfire Daily Fire Perimeter |
| ● Other | 🏠 Incident Command Post | Ⓡ Repeater | ⌘ Division Break | 🟩 Completed Line | ⚡ Proposed Dozer Line | 🟤 Roads | 🟤 Stimson Lumber | 🟡 Other Private |
| ● Drop Point | 🏠 Lookout | ⚠ Safety Zone | ★ Landings | ⌘ Completed Dozer Line | R - Road as Completed Line | 🟤 Access or Improved Road | | |
| 🔴 Fire Origin | 📶 Mobile Weather Unit | 🌊 Water Source | | | | | | |





GOLD HILL
 MT-KNF-000195
 Fire perimeter as of
 09/09/2018 @ 2200 hrs
 5,830 Acres

✕ Closure	● Helispot	Ⓟ Pump	⚠ Value at Risk	🔴 Uncontrolled Fire Edge	H - Completed Hand Line	⚡ Line Break Completed	🟤 Existing Trail	🔴 Wildfire Daily Fire Perimeter
● Other	🏠 Incident Command Post	Ⓜ Repeater	⏏ Division Break	🟩 Completed Line	R - Road as Completed Line	✕ Proposed Dozer Line	🟤 Roads	🟤 Stimson Lumber
● Drop Point	🏠 Lookout	⚠ Safety Zone	ⓧ Completed Dozer Line	🟩 Other Private	🛣 Access or Improved Road	⊕ Other		
🔴 Fire Origin	📡 Mobile Weather Unit	🌊 Water Source	★ Landings					

