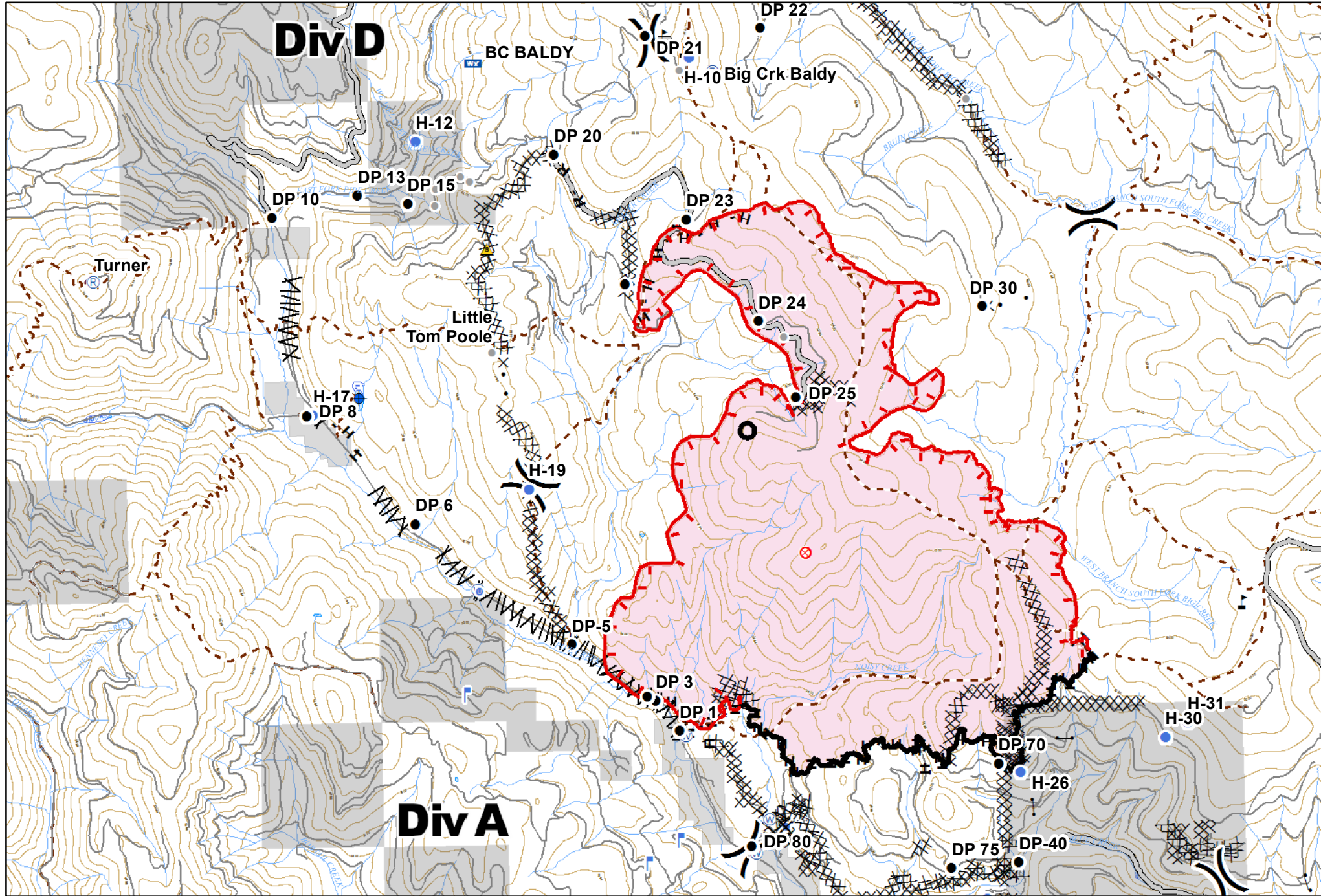


GOLD HILL
 MT-KNF-000195
 Fire perimeter as of
 09/10/2018 @ 1600 hrs
 6,252 Acres

- | | | | | | | | |
|---------------|-------------------------|----------------|-----------------------|--------------------------|--------------------------|---------------------------|---------------------------------|
| ✕ Closure | • Helispot | Ⓟ Pump | ⚠ Value at Risk | — Uncontrolled Fire Edge | — Completed Hand Line | — Access or Improved Road | ■ Wildfire Daily Fire Perimeter |
| ● Other | ▣ Incident Command Post | Ⓜ Repeater | ⌘ Division Break | — Completed Line | — Road as Completed Line | — Line Break Completed | |
| ● Drop Point | ▣ Lookout | ▲ Safety Zone | ✕ Proposed Dozer Line | ✕✕✕ Completed Dozer Line | | | |
| ● Fire Origin | Ⓜ Mobile Weather Unit | Ⓜ Water Source | ★ Landings | | | | |

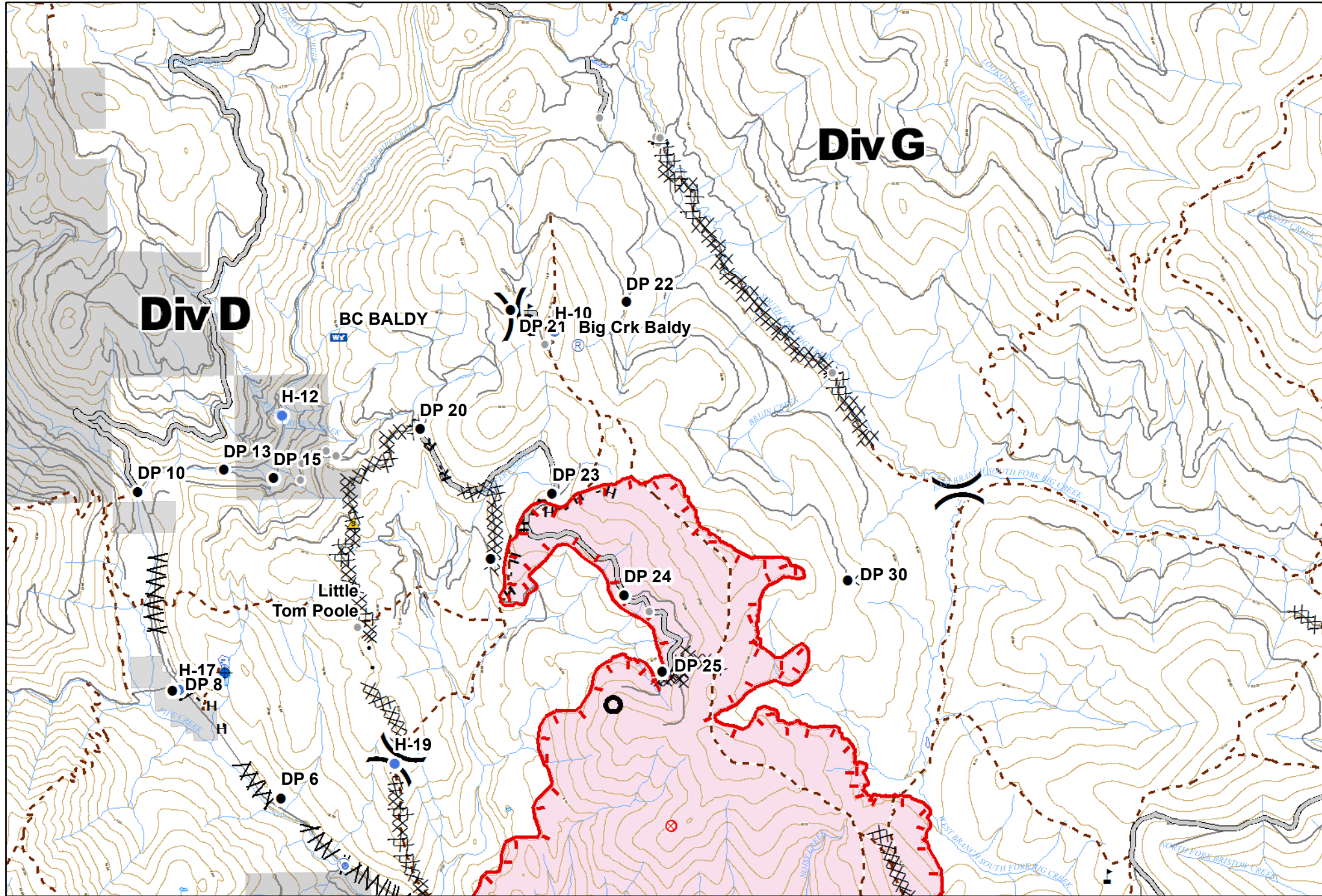
0 0.75 1.5 Miles



GOLD HILL
 MT-KNF-000195
 Fire perimeter as of
 09/10/2018 @ 1600 hrs
 6,252 Acres

- | | | | | | | | | | | | | | | | |
|---|-------------|---|-----------------------|---|--------------|---|----------------|------|------------------------|---|------------------------|---|-------------------------|---|-------------------------------|
| × | Closure | ● | Helispot | Ⓟ | Pump | ⚠ | Value at Risk | — | Uncontrolled Fire Edge | — | Completed Hand Line | — | Access or Improved Road | ■ | Wildfire Daily Fire Perimeter |
| ● | Other | Ⓜ | Incident Command Post | Ⓜ | Repeater | ⌘ | Division Break | — | Completed Line | — | Road as Completed Line | — | Line Break Completed | × | Proposed Dozer Line |
| ● | Drop Point | Ⓜ | Lookout | ⚠ | Safety Zone | ⌘ | Landings | XXXX | Completed Dozer Line | | | | | | |
| ⊙ | Fire Origin | Ⓜ | Mobile Weather Unit | Ⓜ | Water Source | | | | | | | | | | |

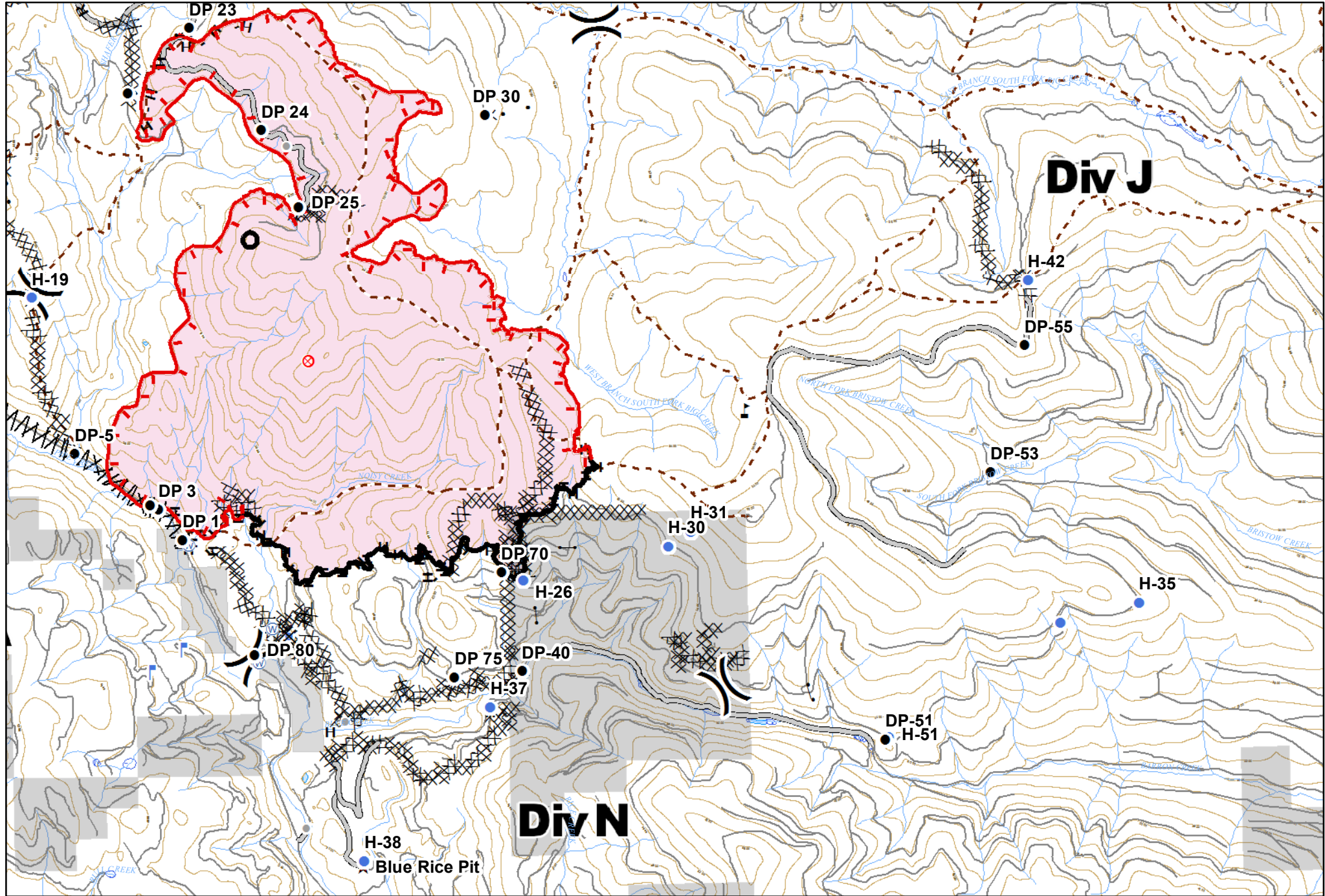




GOLD HILL
 MT-KNF-000195
 Fire perimeter as of
 09/10/2018 @ 1600 hrs
 6,252 Acres

- | | | | | | | | |
|---------------|-------------------------|----------------|------------------|---------------------------|--------------------------|---------------------------|---------------------------------|
| ✕ Closure | ● Helispot | Ⓟ Pump | ⚠ Value at Risk | — Uncontrolled Fire Edge | — Completed Hand Line | — Access or Improved Road | — Wildfire Daily Fire Perimeter |
| ● Other | Ⓜ Incident Command Post | Ⓡ Repeater | ⌘ Division Break | — Completed Line | — Road as Completed Line | — Line Break Completed | |
| ● Drop Point | Ⓛ Lookout | ⚠ Safety Zone | ★ Landings | XXXX Completed Dozer Line | ✕ Proposed Dozer Line | | |
| ● Fire Origin | Ⓜ Mobile Weather Unit | Ⓜ Water Source | | | | | |





GOLD HILL
 MT-KNF-000195
 Fire perimeter as of
 09/10/2018 @ 1600 hrs
 6,252 Acres

- | | | | | | | | | | | | | | | | |
|---|-------------|---|-----------------------|---|--------------|---|----------------------|---|------------------------|---|------------------------|---|-------------------------|---|-------------------------------|
| × | Closure | • | Helispot | Ⓟ | Pump | ⚠ | Value at Risk | — | Uncontrolled Fire Edge | — | Completed Hand Line | — | Access or Improved Road | ■ | Wildfire Daily Fire Perimeter |
| ● | Other | Ⓜ | Incident Command Post | Ⓜ | Repeater | ⌘ | Division Break | — | Completed Line | — | Road as Completed Line | Ⓜ | Line Break Completed | Ⓜ | Proposed Dozer Line |
| ● | Drop Point | Ⓜ | Lookout | ⚠ | Safety Zone | Ⓜ | Completed Dozer Line | Ⓜ | Completed Line | Ⓜ | Completed Dozer Line | Ⓜ | Proposed Dozer Line | Ⓜ | Proposed Dozer Line |
| ● | Fire Origin | Ⓜ | Mobile Weather Unit | Ⓜ | Water Source | ★ | Landings | Ⓜ | Completed Dozer Line | Ⓜ | Proposed Dozer Line | Ⓜ | Proposed Dozer Line | Ⓜ | Proposed Dozer Line |

0 0.5 1 Miles