

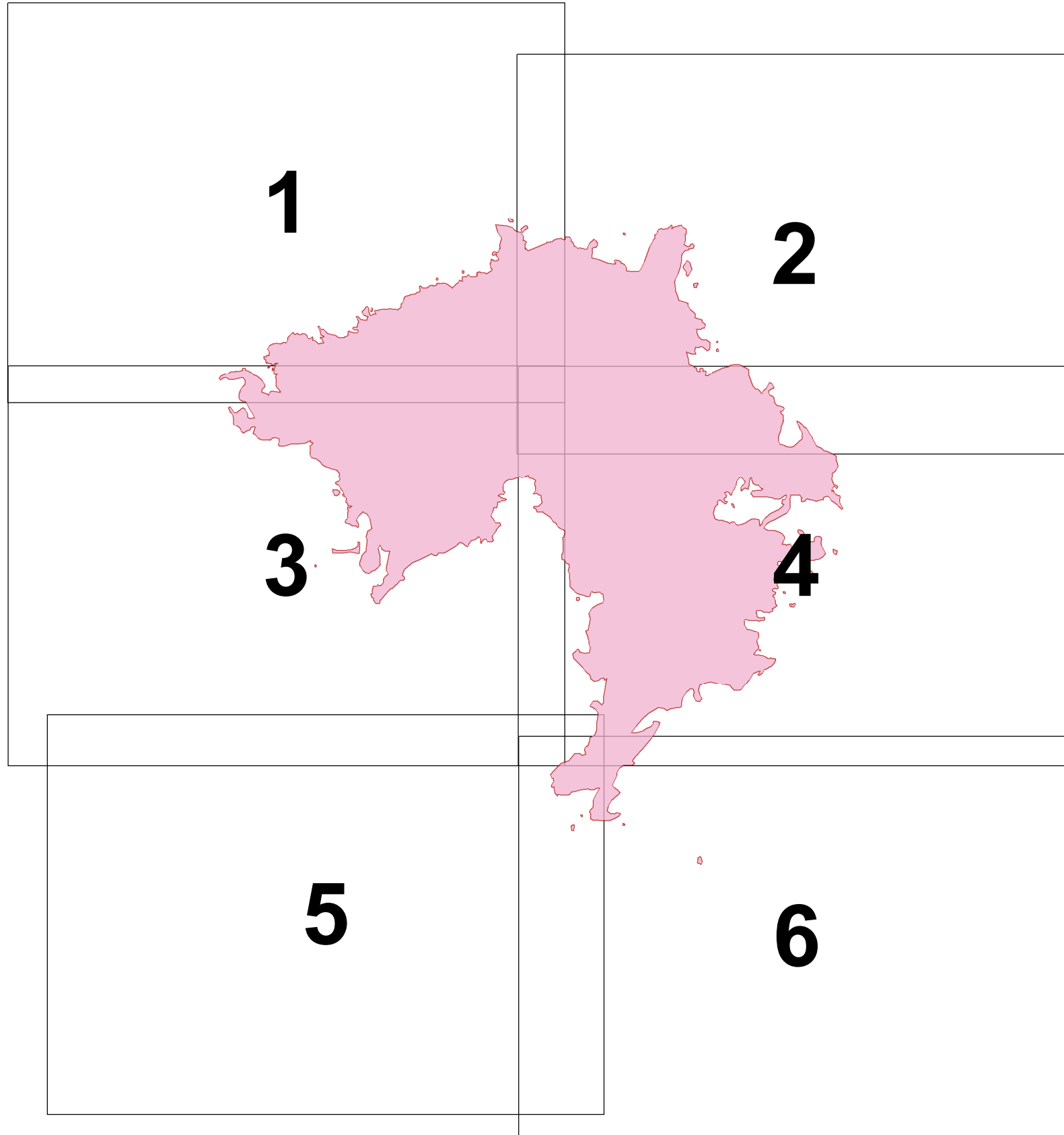
Goldstone
IAP Map Index
MT-BDF-003262

Day Operational Period 8/24/2018

GIS Acres 9,264
8/22/2018 0900

NAD 1983 UTM Zone 12N

Map Created: 8/23/2018, 9:52:42 PM



Day Operational Period 8/24/2018

GIS Acres 9,264
8/22/2018 0900

NAD 1983 UTM Zone 12N

Map Created: 8/23/2018, 9:31:51 PM

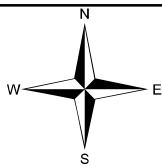
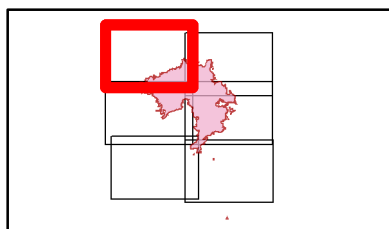
- Camp
- Drop Point
- Helispot
- Mobile Weather Unit
- Value at Risk

Feature Category (Line Type)

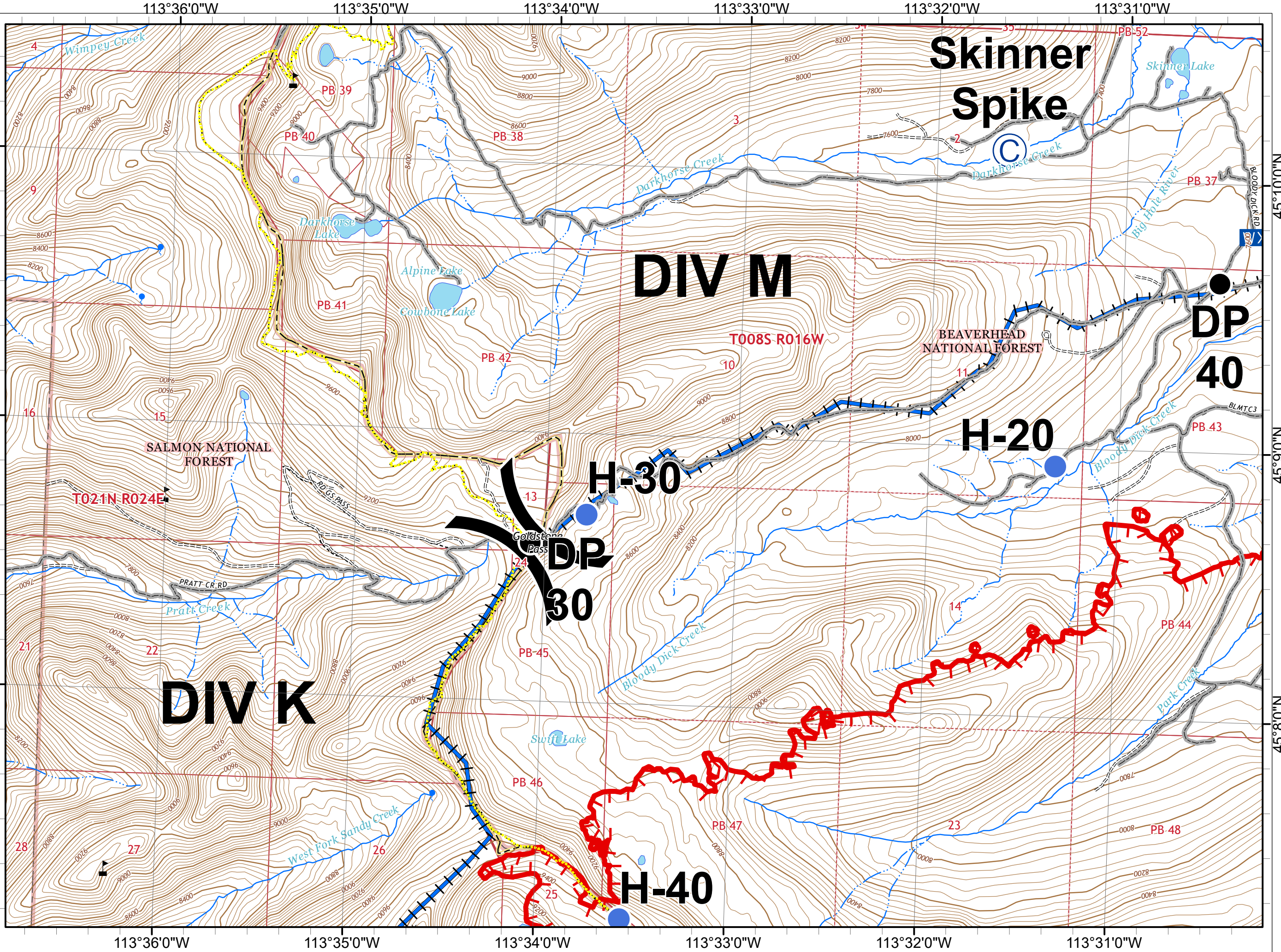
Proposed Burnout

TFR

(Division



0 0.25 0.5
Miles
1:24,000



Day Operational Period 8/24/2018

GIS Acres 9,264
8/22/2018 0900

NAD 1983 UTM Zone 12N

Map Created: 8/23/2018, 9:32:04 PM

- Drop Point
- Helispot
- WX Mobile Weather Unit

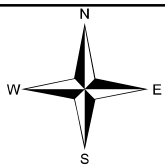
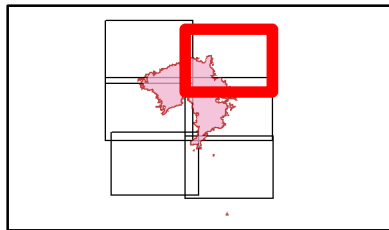
Feature Category (Line Type)

Proposed Burnout

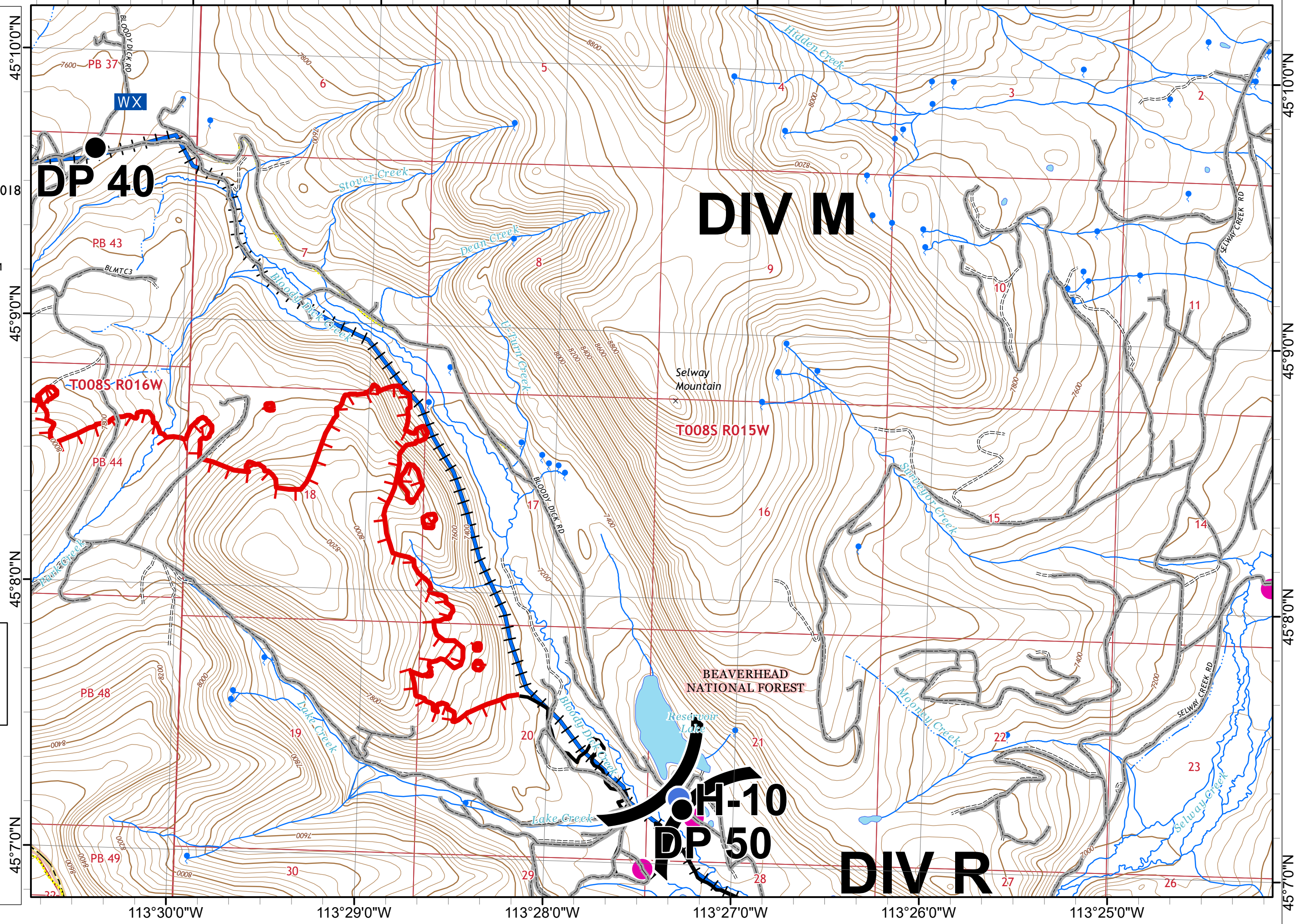


TFR

) (Division



0 0.25 0.5 Miles
1:24,000



DP 40

DIV M

DIV R

H-10
DP 50

Day Operational Period 8/24/2018

GIS Acres 9,264
8/22/2018 0900

NAD 1983 UTM Zone 12N

Map Created: 8/23/2018, 9:32:17 PM

- Drop Point
- Helispot
- Ⓡ Repeater
- ⚠ Value at Risk

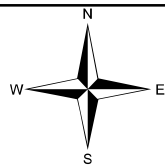
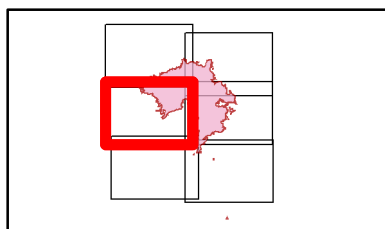
Feature Category (Line Type)

— Proposed Burnout

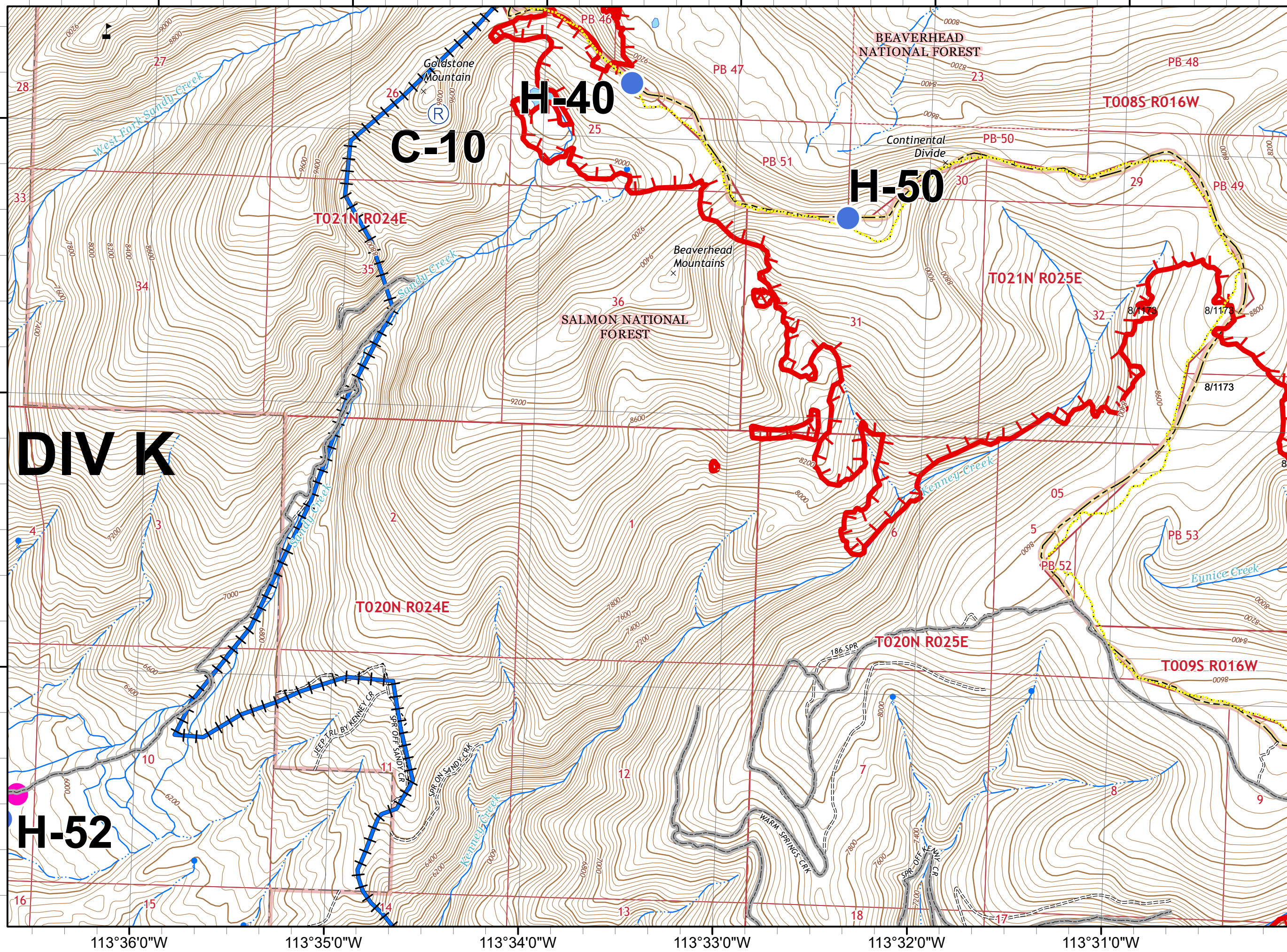
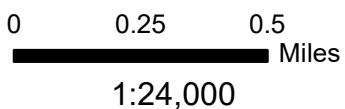


TFR

) (Division



SOUTHWEST AREA
INCIDENT MANAGEMENT
TEAM 4



Goldstone
IAP Map
MT-BDF-003262

Page 4 of 6

Day Operational Period 8/24/2018

GIS Acres 9,264
8/22/2018 0900

NAD 1983 UTM Zone 12N

Map Created: 8/23/2018, 9:32:29 PM

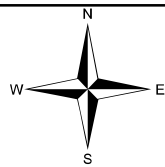
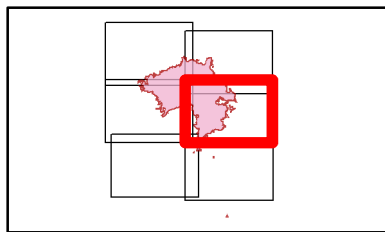
- Drop Point
- Helispot

Feature Category (Line Type)

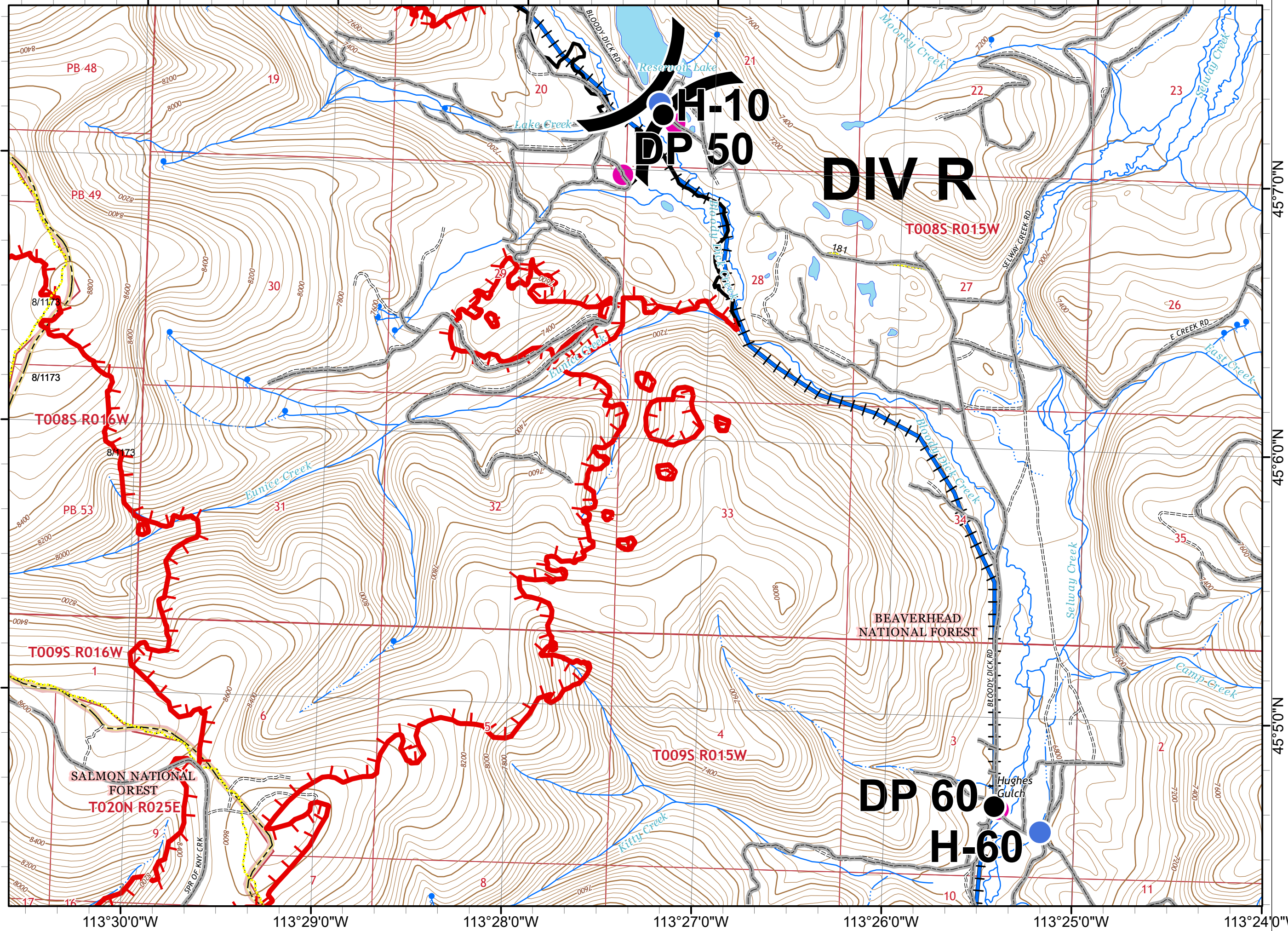
— Proposed Burnout

TFR

) (Division



0 0.25 0.5
1:24,000 Miles



Day Operational Period 8/24/2018

GIS Acres 9,264
8/22/2018 0900

NAD 1983 UTM Zone 12N

Map Created: 8/23/2018, 9:32:41 PM

- Drop Point
- Helispot

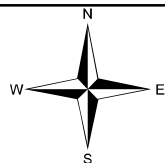
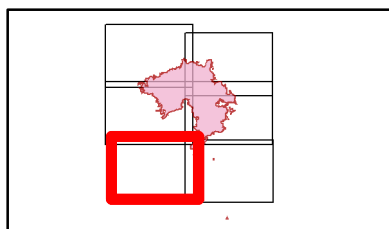
Feature Category (Line Type)

— Proposed Burnout

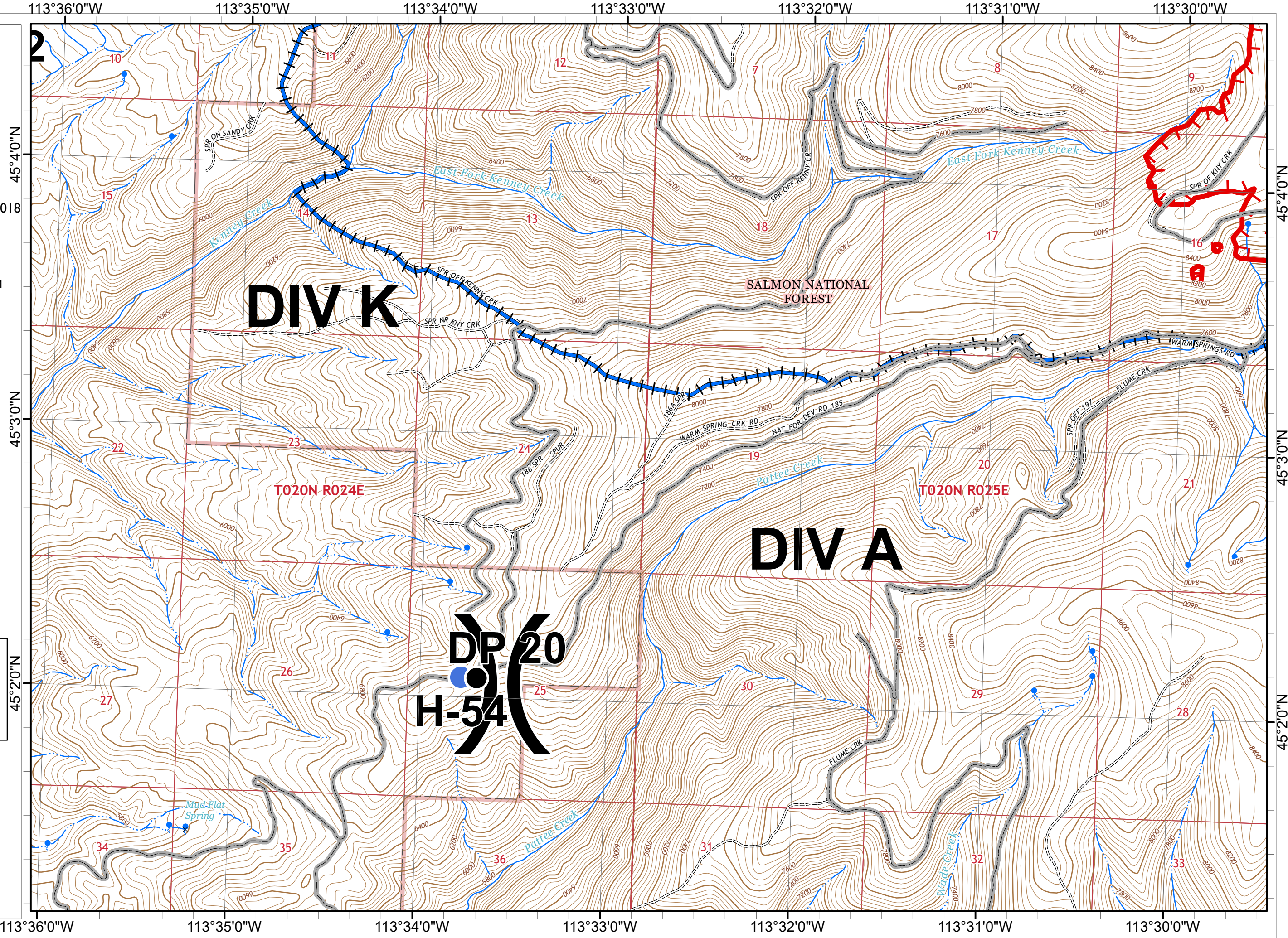


TFR

) (Division



0 0.25 0.5 Miles
1:24,000



Goldstone
IAP Map
MT-BDF-003262

Page 6 of 6

Day Operational Period 8/24/2018

GIS Acres 9,264
8/22/2018 0900

NAD 1983 UTM Zone 12N

Map Created: 8/23/2018, 9:32:56 PM

- Drop Point
- ⊥ Gate
- Helispot
- ⚠ Value at Risk

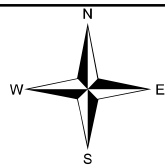
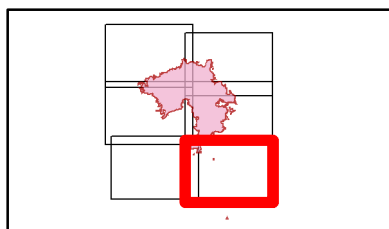
Feature Category (Line Type)

— Proposed Burnout



TFR

) (Division



0 0.25 0.5
Miles
1:24,000

