


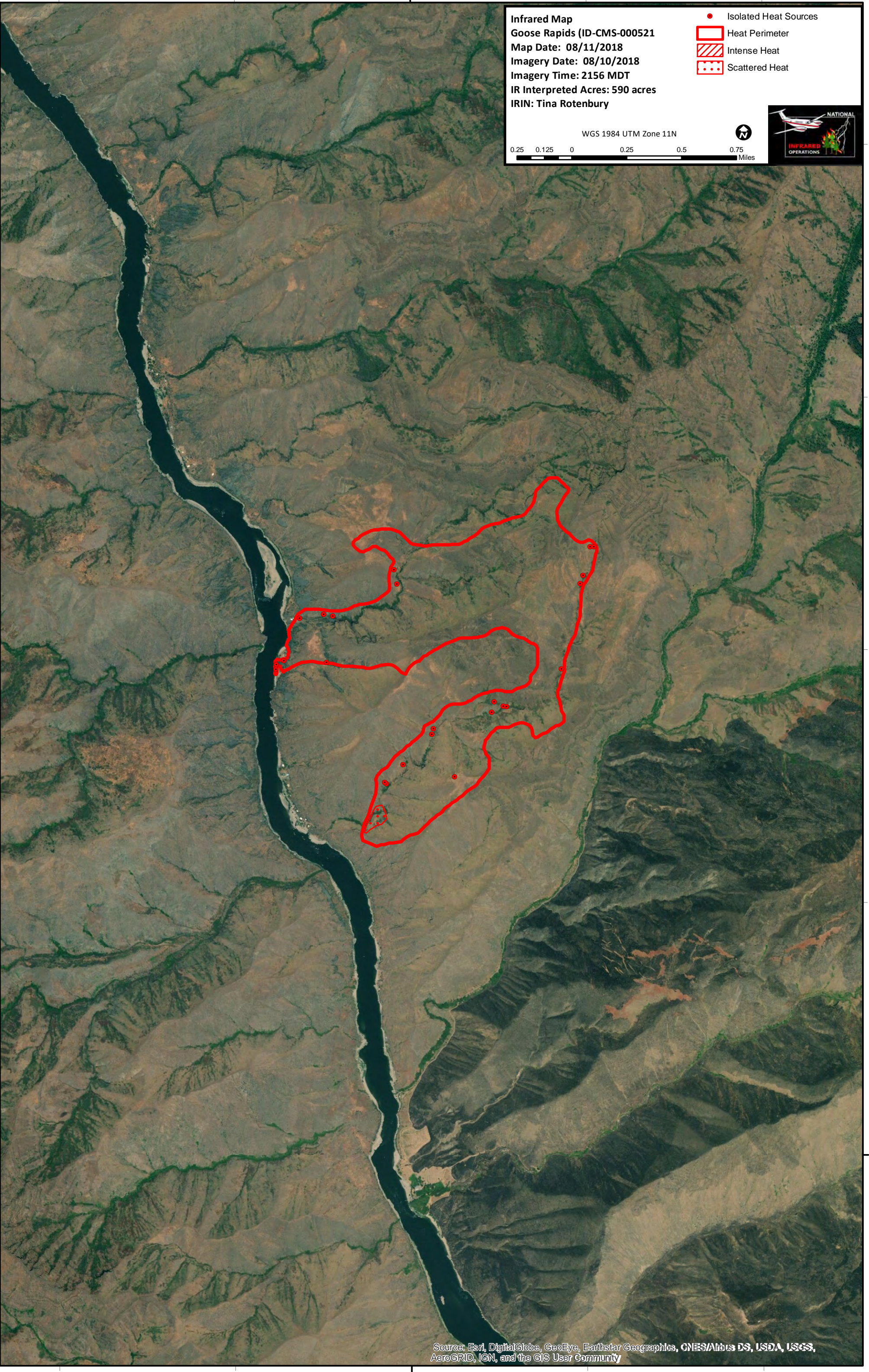
116°55'W

Infrared Map
 Goose Rapids (ID-CMS-000521)
 Map Date: 08/11/2018
 Imagery Date: 08/10/2018
 Imagery Time: 2156 MDT
 IR Interpreted Acres: 590 acres
 IRIN: Tina Rotenbury

- Isolated Heat Sources
- Heat Perimeter
- Intense Heat
- Scattered Heat

WGS 1984 UTM Zone 11N

0.25 0.125 0 0.25 0.5 0.75 Miles

46°0'N

46°0'N

Source: Esri, DigitalGlobe, GeoEye, Earthstar Geographics, CNES/Airbus DS, USDA, USGS, AeroGRID, IGN, and the GIS User Community

116°55'W