

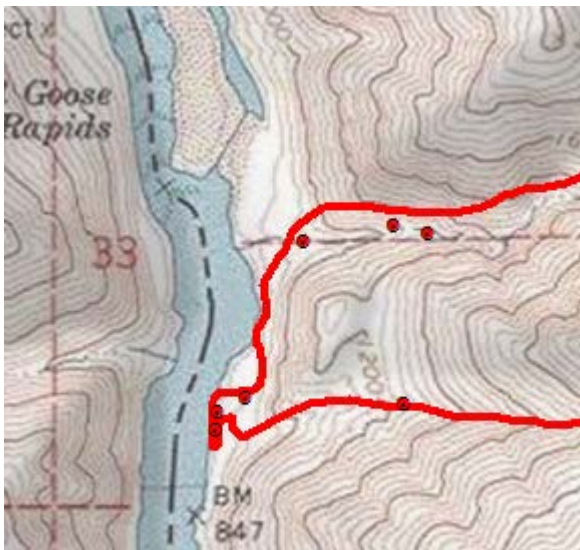
## INFRARED INTERPRETER'S DAILY LOG

<b>Incident Name:</b> Goose Rapids ID-CMS-000521	<b>IR Interpreter(s):</b> Tina Rotenbury trotenbury@fs.fed.us	<b>Local Dispatch Phone:</b> Grangeville Interagency Dispatch – 208-983-6800	<b>Interpreted Size:</b> 590 Acres <b>Growth:</b> Initial IR Acres
<b>Flight Time:</b> 2156 (MDT) <b>Flight Date:</b> 08/10/2018	<b>Interpreter(s) location:</b> Russellville, AR <b>Interpreter(s) Phone:</b> 479-967-8681 (landline) 479-886-0878 (cell)	<b>GACC IR Liaison:</b> Tim Stauffer <b>GACC IR Liaison Phone:</b> 406-529-6366	<b>National Coordinator:</b> Jan Johnson <b>National Coord. Phone:</b> 208-387-5900 C: 208-870-5066
<b>Ordered By:</b> Grangeville Interagency Dispatch	<b>A Number:</b> A-12	<b>Aircraft/Scanner System:</b> N149Z / Phoenix	<b>Pilots/Techs:</b> Johnson/DeHaas/Kazimir
<b>IRIN Comments on imagery:</b> 1 pass, Ortho and Color flown.		<b>Weather at time of flight:</b> Clear	<b>Flight Objective:</b> Identify and map Heat perimeter, Scattered Heat and Isolated Heat Sources.
<b>Date and Time Imagery Received by Interpreter:</b> 08/10/2018 – 2205 (MDT)		<b>Type of media for final product:</b> Shape files, KMZ, PDF, and IRIN Log	
<b>Date and Time Products Delivered to Incident:</b> 08/11/2018 –0700 (MDT)		<b>Digital files sent to:</b> <a href="mailto:idgvc@fs.fed.us">idgvc@fs.fed.us</a> & <a href="mailto:adamwarren@fs.fed.us">adamwarren@fs.fed.us</a> <b>NIFC FTP @</b> <a href="https://ftp.nifc.gov/public/incident_specific_data/n_rockies/2018_fires/2018_GooseRapids/IR/20180811">https://ftp.nifc.gov/public/incident_specific_data/n_rockies/2018_fires/2018_GooseRapids/IR/20180811</a>	

**Comments /notes on tonight's mission and this interpretation:**

Initial IR Interpretation to establish perimeter. Not confident with acres, it was difficult to determine pre-burned area looking at the imagery. No INTENSE HEAT mapped

Not much heat at all – One area of scattered heat and isolated heat sources. Looked like a couple of residents along the Snake River where those isolated heat points are located.



# INFRARED INTERPRETER'S DAILY LOG

Mostly isolated heat along perimeter edge.

