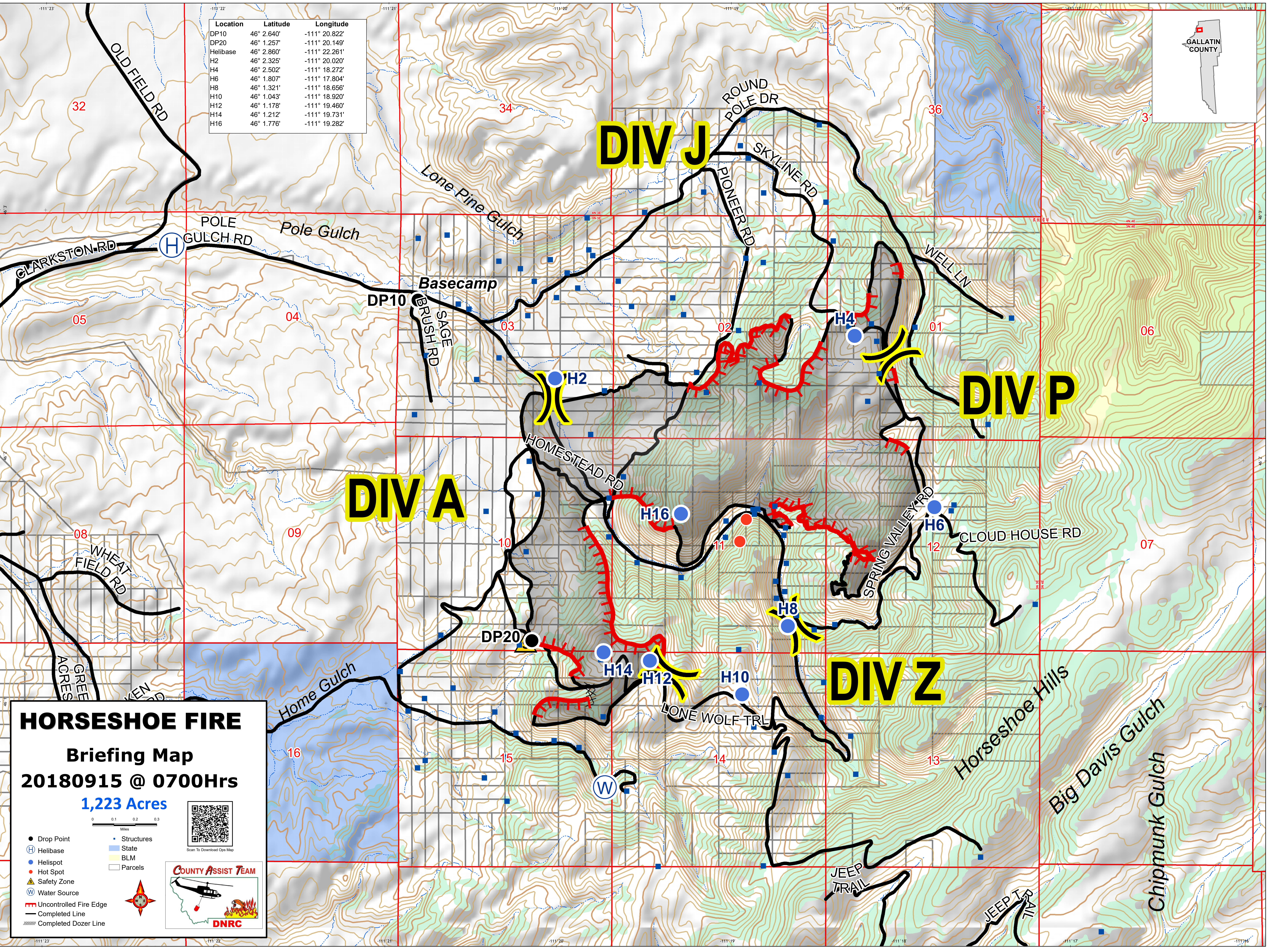


Location	Latitude	Longitude
DP10	46° 2.640'	-111° 20.822'
DP20	46° 1.257'	-111° 20.149'
Helibase	46° 2.860'	-111° 22.261'
H2	46° 2.325'	-111° 20.020'
H4	46° 2.502'	-111° 18.272'
H6	46° 1.807'	-111° 17.804'
H8	46° 1.321'	-111° 18.656'
H10	46° 1.043'	-111° 18.920'
H12	46° 1.178'	-111° 19.460'
H14	46° 1.212'	-111° 19.731'
H16	46° 1.776'	-111° 19.282'



HORSESHOE FIRE
Briefing Map
20180915 @ 0700Hrs
1,223 Acres

- Drop Point
- Ⓜ Helibase
- Helispot
- Hot Spot
- ▲ Safety Zone
- Ⓜ Water Source
- Uncontrolled Fire Edge
- Completed Line
- ⊘ Completed Dozer Line
- Structures
- State
- BLM
- Parcels

Scan To Download Ops Map

COUNTY ASSIST TEAM

DNRC