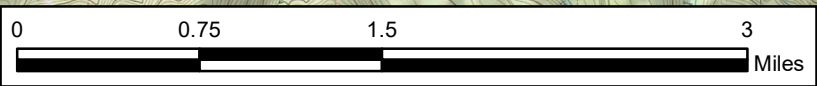
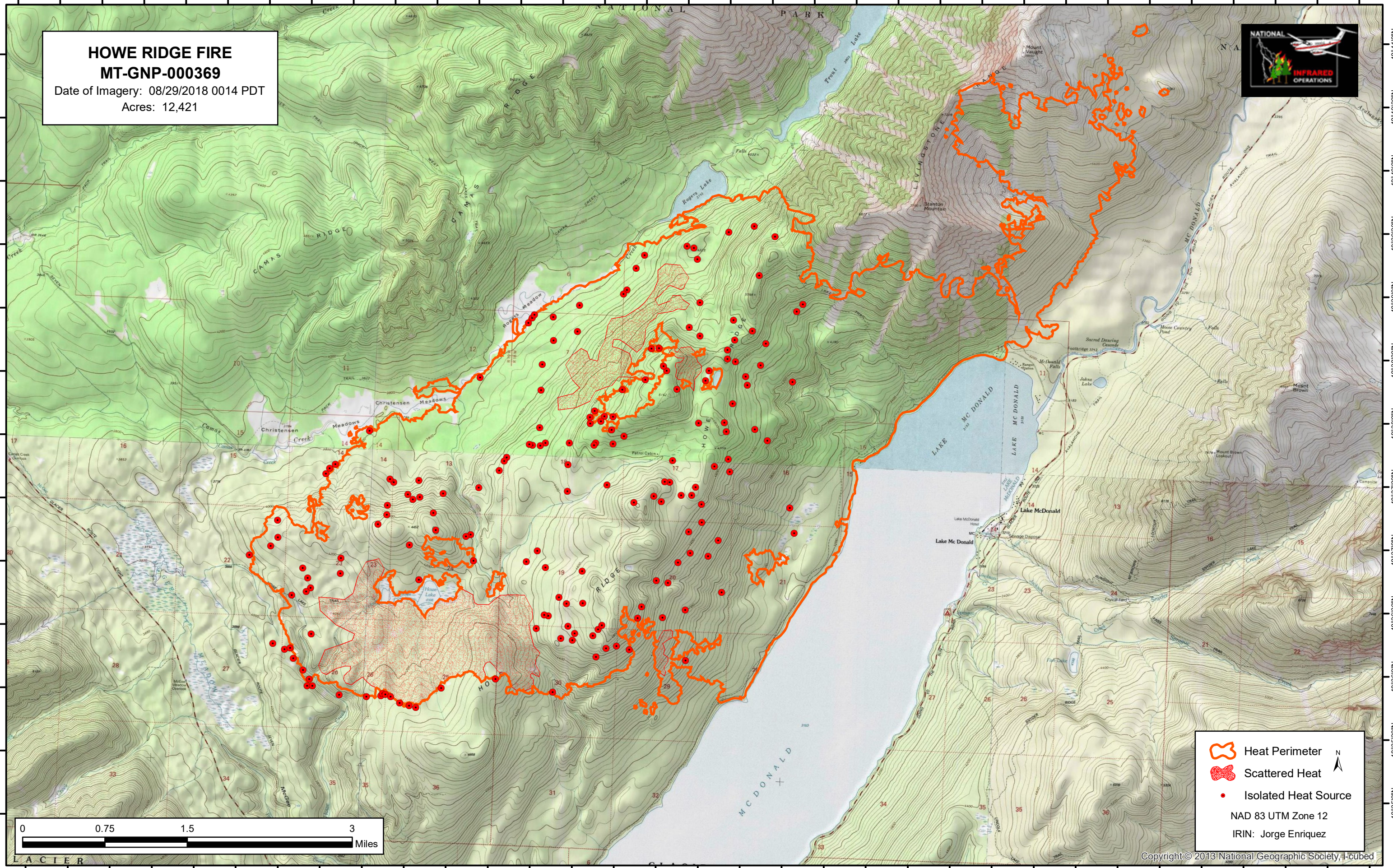





114°4'30"W 114°4'0"W 114°3'30"W 114°3'0"W 114°2'30"W 114°2'0"W 114°1'30"W 114°1'0"W 114°0'30"W 114°0'0"W 113°59'30"W 113°59'0"W 113°58'30"W 113°58'0"W 113°57'30"W 113°57'0"W 113°56'30"W 113°56'0"W 113°55'30"W 113°55'0"W 113°54'30"W 113°54'0"W 113°53'30"W 113°53'0"W 113°52'30"W 113°52'0"W 113°51'30"W 113°51'0"W 113°50'30"W 113°50'0"W 113°49'30"W 113°49'0"W 113°48'30"W



HOWE RIDGE FIRE
MT-GNP-000369
Date of Imagery: 08/29/2018 0014 PDT
Acres: 12,421



-  Heat Perimeter
-  Scattered Heat
-  Isolated Heat Source

NAD 83 UTM Zone 12
IRIN: Jorge Enriquez

Copyright © 2013 National Geographic Society, I-cubed

114°4'0"W 114°3'30"W 114°3'0"W 114°2'30"W 114°2'0"W 114°1'30"W 114°1'0"W 114°0'30"W 114°0'0"W 113°59'30"W 113°59'0"W 113°58'30"W 113°58'0"W 113°57'30"W 113°57'0"W 113°56'30"W 113°56'0"W 113°55'30"W 113°55'0"W 113°54'30"W 113°54'0"W 113°53'30"W 113°53'0"W 113°52'30"W 113°52'0"W 113°51'30"W 113°51'0"W 113°50'30"W 113°50'0"W 113°49'30"W 113°49'0"W 113°48'30"W