

# Howe Ridge

MT-GNP-369  
8/20/2018 Day

Approx 4,138 acres  
8/18 1700hrs

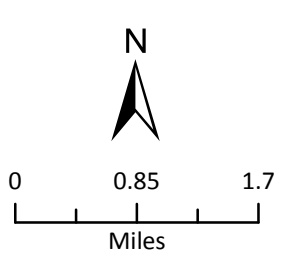
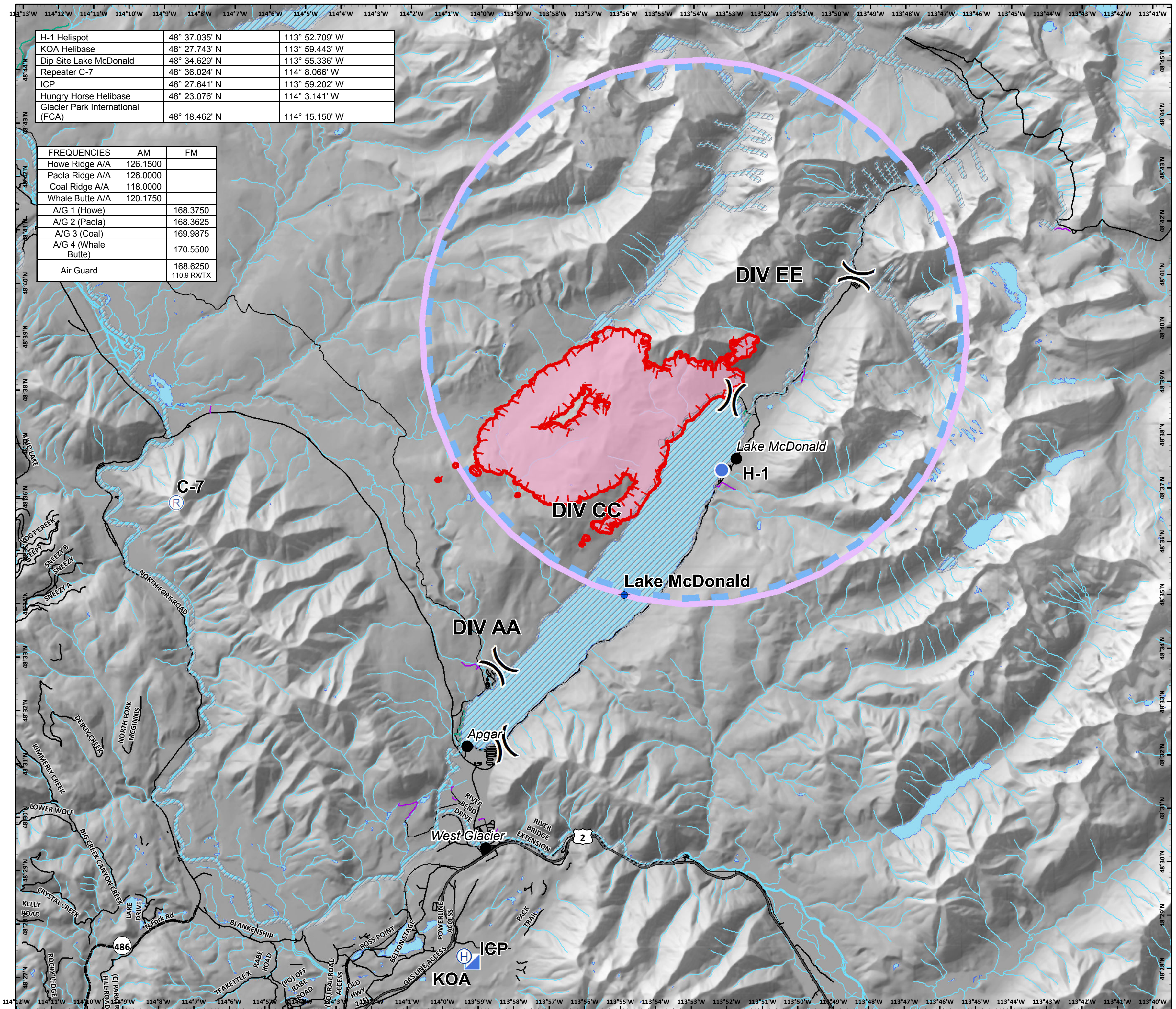
## Air Ops

### Legend

-  Dip Site
-  Helibase
-  Helispot
-  Incident Command Post
-  Repeater
-  Division Break
-  Uncontrolled Fire Edge
-  Temporary Flight Restriction
-  Wildfire Daily Fire Perimeter
-  Retardant Avoidance Area
-  Waterbody
-  Streams

H-1 Helispot	48° 37.035' N	113° 52.709' W
KOA Helibase	48° 27.743' N	113° 59.443' W
Dip Site Lake McDonald	48° 34.629' N	113° 55.336' W
Repeater C-7	48° 36.024' N	114° 8.066' W
ICP	48° 27.641' N	113° 59.202' W
Hungry Horse Helibase	48° 23.076' N	114° 3.141' W
Glacier Park International (FCA)	48° 18.462' N	114° 15.150' W

FREQUENCIES	AM	FM
Howe Ridge A/A	126.1500	
Paola Ridge A/A	126.0000	
Coal Ridge A/A	118.0000	
Whale Butte A/A	120.1750	
A/G 1 (Howe)		168.3750
A/G 2 (Paola)		168.3625
A/G 3 (Coal)		169.9875
A/G 4 (Whale Butte)		170.5500
Air Guard		168.6250
		110.9 RX/TX



Coordinate System: NAD 1983 UTM Zone 12N  
Datum: North American 1983  
Prepared by: sweami  
8/19/2018 0105 hrs