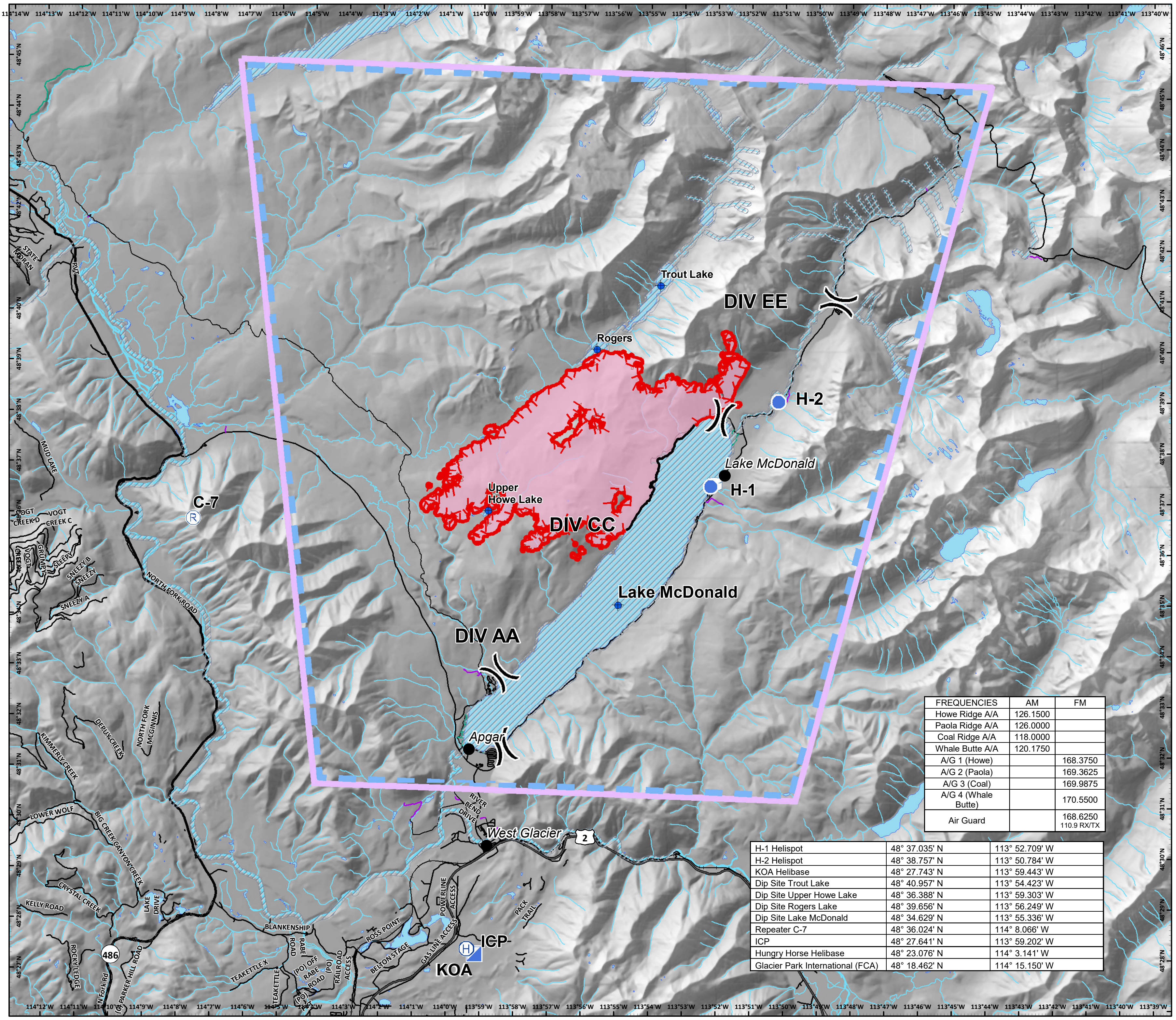


Howe Ridge
 MT-GNP-369
 8/22/2018 Day

Approx 9672 acres
 8/20 2105hrs

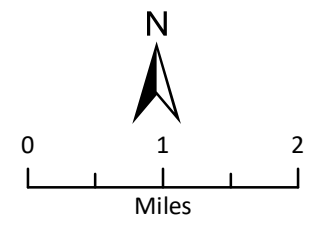
Air Ops

-  Dip Site
-  Helibase
-  Helispot
-  Incident Command Post
-  Repeater
-  Water Tank
-  Division Break
-  Uncontrolled Fire Edge
-  Completed Line
-  Temporary Flight Restriction
-  Wildfire Daily Fire Perimeter
-  Retardant Avoidance Area
-  North Fork Road
-  Waterbody
-  Streams



FREQUENCIES	AM	FM
Howe Ridge A/A	126.1500	
Paola Ridge A/A	126.0000	
Coal Ridge A/A	118.0000	
Whale Butte A/A	120.1750	
A/G 1 (Howe)		168.3750
A/G 2 (Paola)		169.3625
A/G 3 (Coal)		169.9875
A/G 4 (Whale Butte)		170.5500
Air Guard		168.6250 110.9 RX/TX

H-1 Helispot	48° 37.035' N	113° 52.709' W
H-2 Helispot	48° 38.757' N	113° 50.784' W
KOA Helibase	48° 27.743' N	113° 59.443' W
Dip Site Trout Lake	48° 40.957' N	113° 54.423' W
Dip Site Upper Howe Lake	48° 36.388' N	113° 59.303' W
Dip Site Rogers Lake	48° 39.656' N	113° 56.249' W
Dip Site Lake McDonald	48° 34.629' N	113° 55.336' W
Repeater C-7	48° 36.024' N	114° 8.066' W
ICP	48° 27.641' N	113° 59.202' W
Hungry Horse Helibase	48° 23.076' N	114° 3.141' W
Glacier Park International (FCA)	48° 18.462' N	114° 15.150' W



Coordinate System: NAD 1983 UTM Zone 12N
 Datum: North American 1983
 Prepared by: Admin
 8/21/2018 2245 hrs