

# *GLACIER NATIONAL PARK*

Boundary MT-GNP-000473 PPL30D (1502)

Howe Ridge MT-GNP-000369 PPL263 (1502)

## *INCIDENT ACTION PLAN*



Wednesday, September 26, 2018

Thursday, September 27, 2018

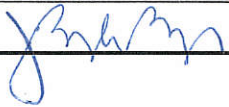
Friday, September 28, 2018

0700-2000



INCIDENT OBJECTIVES	1. Incident Name Boundary Howe Ridge	2. Date September 25, 2018	3. Time 1800
4. Operational Periods: <b>September 26, 27, 28, 2018 0700 to 2000</b>			
<p>5. General Control Objectives for the Incident (include alternatives)</p> <ul style="list-style-type: none"> <li>Limit growth of Howe Ridge Fire along McDonald Creek to the minimum necessary to establish a holding line that is safe for firefighters and offers high probability of success. Also limit growth towards Fish Creek Campground area and minimize fire-related impacts to visitors in this area.</li> <li>On the Boundary Fire, limit fire growth east toward Boundary Bay and/or along Waterton Lake.</li> <li>Protect and minimize impacts to identified values at risk including Glacier National Park infrastructure; community of Apgar; Going to the Sun Road Corridor, Goat Haunt Ranger Station, and utility infrastructure.</li> </ul> <p>5a. Management Objectives</p> <ul style="list-style-type: none"> <li>Implement suppression actions that have a high potential for success, carefully weighing risk exposure to firefighters.</li> <li>Implement suppression actions in consideration of values at risk in order to minimize adverse impacts.</li> <li>Maintain and strengthen relationships with partner agencies, organizations, tribes and community groups and members.</li> <li>Consider fire fighter exposure with respect to communications, driving, aviation, and suppression in decisions and actions.</li> <li>Take initial attack action on fires within the delegated IA responsibility area. Support request for assistance to initial attack on local units as feasible.</li> </ul>			
<p>5b. Commander's Intent</p> <ul style="list-style-type: none"> <li><b>Safety:</b> Address fire fighter, public, and aviation safety through hazard/exposure mitigation.</li> <li><b>Communication:</b> We will keep the Agency Administrator informed of significant accomplishments and issues.</li> <li><b>Risk Management:</b> We will use a robust risk assessment process to mitigate unnecessary risk to fire fighters and update and/or revise decisions as necessary.</li> <li><b>Human Resources:</b> We will ensure that all incident personnel be treated with dignity and respect. We have a zero tolerance for harassment, alcohol, or illegal drug use.</li> <li><b>Operations:</b> We will make informed tactical decisions engaging the fire in the right locations with the appropriate resources.</li> <li><b>Public Information:</b> We will provide timely and accurate information through the press, meetings, trap lines, briefings, and social media.</li> <li><b>Stakeholders:</b> We will coordinate with the delegating agencies to identify key partners and keep them effectively informed of progress and to use their local knowledge.</li> <li><b>Finance:</b> We will establish and monitor cost effective methods for accomplishing incident objectives.</li> <li><b>Resource Advisors:</b> We will work closely with resource advisors to limit fire impacts to sensitive cultural and environmental areas.</li> </ul>			
6. Weather Forecast & General Safety Message for Period – See Attached			
7. Attachments (mark if attached)			
<input checked="" type="checkbox"/> Organization List - ICS 203	<input checked="" type="checkbox"/> Weather Forecast	<input checked="" type="checkbox"/> Safety Message	
<input checked="" type="checkbox"/> Div. Assignment Lists - ICS 204	<input checked="" type="checkbox"/> Fire Behavior Forecast	<input checked="" type="checkbox"/> Medical Emergency Com Plan	
<input checked="" type="checkbox"/> Communications Plan - ICS 205	<input checked="" type="checkbox"/> Incident Map	<input type="checkbox"/>	
<input checked="" type="checkbox"/> Medical Plan - ICS 206	<input checked="" type="checkbox"/> Air Operations– ICS 220	<input type="checkbox"/>	
9. Prepared by (Planning Section Chief) Mark Glos 	9. Approved by (Incident Commander) Joe Sampson 		

ORGANIZATIONAL STRUCTURE CHART		9. Operations Section	
1. Incident Name Boundary and Howe Ridge		Operations	Gabe Holguin (9/28)
2. Date 09/25/18		A. DIVISION	
k4. Operational Period 09/26/18, 09/27/18, 09/28/18 0700 - 2000		Boundary	UNSTAFFED
5. Incident Commander and Staff		A/C	Matt Young (9/28)
Incident Commander	Joe Sampson (9/28)	E	
Deputy			
Safety Officer	Bobby Sutton (9/28)	B.	
Information Officer	Sue Exline		
6. Agency Representatives			
Glacier NP AA	Jeff Mow, Paul Austin		
Parks Canada	Scott Murphy		
7. Planning Section			
Chief	Mark Glos (9/28)		
Glacier NP READ	Phil Wilson		
Canada READ	Dennis Mabsen		
		C.	
		D. Air Support	
		Branch Director	
		Air Tactical Supervisor	
8. Logistics Section		Helibase Manager	
Chief	Russ Riebe (9/26) Peter Pappas (t) (9/27)	Air Support Supervisor	
Facilities Unit	Gordo Oppelt (9/26)	Helicopter Coordinator	
Communications Unit	Todd Orr (9/26)	Air Tanker Coordinator	
Base Camp Manager	Donovan Suko (9/26)		
		10. Finance	
		Chief	Rob Schuler (9/28)
		Equipment Unit	Bill Herbst (9/28)
Prepared by: Jode Boyles Briggs			





### 3 Day Forecast Howe Ridge Fire from a forecast point on the West side of McDonald Lake

Forecast For Lat/Lon: 48.5890/-113.9460 (Elev. 3496 ft)  
 7 Miles NNE West Glacier MT  
 Forecast Created at: 11am MDT Sep 25, 2018

Custom Weather Forecast Table

	Tue Sep 25				Wed Sep 26				Thu Sep 27			
Weather	Patchy Fog				Slight Chance Rain Showers				Chance Rain Showers			
Daily-Temp	High 59 Low 33				High 62 Low 32				High 54 Low 38			
Chance of Precip	10%	0%	0%	0%	5%	15%	20%	20%	20%	20%	45%	50%
Precip	0.00"	0.00"	0.00"	0.00"	0.00"	0.00"	0.00"	0.00"	0.00"	0.00"	0.02"	0.02"
12-hr Snow Total	0"	0"	0"	0"	0"	0"	0"	0"	0"	0"	0"	0"
<b>6-Hour</b>	<b>6am Noon 6pm Mdnt</b>				<b>6am Noon 6pm Mdnt</b>				<b>6am Noon 6pm Mdnt</b>			
Temp	33	52	57	38	32	54	60	42	38	49	49	39
Cloudiness	29%	27%	8%	18%	50%	46%	74%	77%	75%	78%	78%	76%
Dewpoint	32	39	36	34	30	39	40	39	36	39	37	35
Relative Humidity	95%	62%	46%	84%	93%	56%	47%	87%	94%	69%	64%	85%
Wind	NE	SW	SW	SW	SW	SW	W	NE	NE	NE	NE	NE
	2	5	7	3	5	7	9	5	5	17	13	8
Snow Level (ft)	6367	6567	7367	7331	7055	7317	8494	8151	7183	6405	6410	5510

# FIRE BEHAVIOR FORECAST

**FORECAST NUMBER:** 41

**TYPE OF FIRE:** Wildfire

**FIRE NAME:** Boundary and Howe Ridge

**OPERATIONAL PERIOD:** 9/26-28/2018

**DATE ISSUED:** 9/25/18

**TIME ISSUED:** 1700

**UNIT:** Glacier National Park/ MT

**ISSUED BY:** Lee Colson – FBAN(t)

*Lee Colson*

## WEATHER:

**\*\*\*The 7 day forecast calls for slight drying 9/26 followed by colder and unsettled weather with sporadic rain and snow showers for 9/27 and 9/28.\*\*\***  
(See the fire weather forecast for details)

### Local weather thresholds that will support active fire behavior:

Temperatures above 80°, Relative Humidity below 20%, Wind speeds above 10mph, 1000-hr FM below 15%

## FUELS:

Older timber fuels are primarily mixed conifer with Subalpine Fir, Spruce, Larch and pine with heavy loads of dead and down material and a brush understory. The fuels holding heat on Boundary are tall, thick brush sheltered by Subalpine Fir and Spruce with a dead and down component. On Howe Ridge, the majority of the fire has been burning in the 2003 Robert and 2001 Moose fire scars, which have heavy loads of dead and down material under dense Lodgepole Pine regen and a substantial amount of standing dead trees.

The current ERC based on West Glacier RAWs is dropping below the 60% percentile and below the average line for this time of year. The 10, 100, and 1,000 HR fuels are 18% or above and increasing towards or above average. Weather until 9/26 will slightly lower fuel moistures, but the forecast from the evening of 9/26 on will raise fuel moistures.

## FIRE BEHAVIOR:

Wednesday through Friday overnight temperatures, increasing RH, decreasing daylight hours, decreasing daytime temperatures, and sporadic moisture forecasted for throughout the week will limit fire behavior. Areas with persistent smokes will continue to smoke, but unburned fuels that are present are becoming resistant to fire, slowing the growth of a fire that is already creeping and smoldering. The forecasted ERC shows a 75% chance ERC will stay at or below the 60<sup>th</sup> percentile (see Season Ending Event Chart).

**Boundary Fire:** The only fuels available to burn at this time will be sheltered. Fire will struggle to spread as precipitation and increases in RH impact sheltered areas and raise fuel moistures.

**Howe Ridge Fire:** The Hemlock/ Cedar areas around the north end of McDonald Lake, DIVS E, will continue to shelter fuels. Smokes that have persisted in the Camas Creek area of DIVS A/C will continue to burn in heavy fuels or under protective tree canopies. It will be difficult for any of these fuels to generate any significant fire behavior.

## AIR OPERATIONS:

Continuing pulses of moisture, inversions, and cloud cover may limit air operations.

## SAFETY:

**Fire Weakened Trees:** Be sure to check your surroundings for trees that have been compromised by fire.

ASSIGNMENT LIST		1.	2. Division/Group		Boundary	
3. Incident Name		4. Operational Periods		Boundary		
		Date: 9/26/18, 9/27/18, 9/28/18		Time: 0700 – 2000		
5. Operations Personnel						
Operations Chief	Gabe Holguin		Division/Group Supervisor			
Branch Director			Air Support Air Attack Supervisor			
6. Resources Assigned This Period						
Strike Team/Task Force/ Resource Designator	Last Shift	Leader	No. Pers.	Drop Off PT./Time	Pick Up PT./Time	
7. Resource Needs						
8. Control Operations						
<b>Task:</b> Monitor fire by camera on Park Canada side.						
<b>Purpose:</b> Determine if resources are needed to check fire spread to East towards Waterton Lake.						
<b>End State:</b> Fire remains on Westside of Waterton Lake.						
9. Special Instructions						
Maintain communication and coordination between Park Canada and NR IMT.						
Scott Murphy (FMO) 403-632-6761; Ryan Peruniak (AFMO) 403-339-1979						
10. Division/Group Communication Summary						
Function	Frequency - RX	Frequency - TX	Tone	Cha	Comments	
DESERT	173.1125	164.3750	107.2	6	Repeater assignments are suggestions. If another repeater works better, use it.	
TAC 1	166.9750	166.9750	173.8	3		
FLATHEAD A/G	169.1250	169.1250	141.3	13		
A/G HOWE RIDGE	168.3750	168.3750		15		
Prepared by (RESL) Jode Boyles Briggs		Approved by (PSC) Mark Glos		Date 09/25/2018	Time 2000	









**AIR OPERATIONS SUMMARY 220**

Prepared By: Jeff Polack

Prepared: 09/25/2018

Prepared Time: 1900 hrs.

**1. INCIDENT NAME:** HOWE RIDGE, AND BOUNDARY

**2. OPERATIONAL PERIOD**  
09/26-28/2018

**START TIME:**  
0700

**END TIME:**  
2000

**SUNRISE:**  
0731

**SUNSET:**  
1922

**3. RISK ASSESSMENT MITIGATIONS, SPECIAL INSTRUCTIONS, and REMARKS:**

Leader's Intent for Aviation

ASSESS MISSION COMPLEXITY AND THE BENEFIT/RISK OF THE MISSION. ENSURE VISIBILITY AND WINDS ARE ADEQUATE TO SAFELY CONDUCT FLIGHT OPERATIONS. ENSURE SAFE VERTICAL & HORIZONTAL SEPARATION BETWEEN AIRCRAFT IN SMOKY CONDITIONS. CALL IN AND OUT OF THE DIPS. DO NOT BE PRESSURED INTO ACCEPTING A MISSION THAT YOU KNOW OR FEEL IS UNSAFE!

**\*\*Hot Water Wash before water dropping in Glacier Park\*\***  
**\*\*No tactical missions after civil sunset\*\***

**4. READY ALERT AIRCRAFT:**

**#1: N406PJ**

*Order through Communications*  
See Medical Plan in the IAP

<http://ftp.faa.gov/ftp2/list.html>

**5. TFR:**

6. PERSONNEL	NAME	PHONE #	7. FREQUENCIES	AM	FM	8. FIXED-WING Avail/ Type/ Make-Model/ N#/ Base
AOBD			A/A Howe Ridge A-4	126.1500		<b>AIRTANKERS:</b>
Operations	Gabe Holquin	575-838-6163				<b>ATGS Platforms:</b>
ATGS			A/G 1 (Howe) A-5		168.3750	
HEB2						
			Forest Flight Follow FNF Direct			Boundary Fire Frequencies: A/G 166.725 TX/RX 151.4 TT/RT A/A 126.150
N406PJ	Darren Borgen/Forest	406-250-8280				
			EMS A/G TAN		155.3400 (156.7 TT)	
			Air Guard		168.6250 (110.9 RT/TT)	Kalispell Aircraft Desk: 406-758-5306 Kalispell Dispatch Center: 406-758-5260 <b>Squawk 1255 Monitor NAVCANADA 126.7000</b> Email costs to NR IMT Finance email: FlatheadGlacierFireFinance@gmail.com

**9. HELICOPTERS (Use Additional Sheets as Necessary)**

FAA N#	TY	MAKE/ MODEL	BASE	START	AVAIL	REMARKS	FAA N#	TY	MAKE/ MODEL	BASE	START	AVAIL	REMARKS
N406PJ	3	Bell 407	Hungry Horse	0800	1630	FNF T3							

10. TASK/ MISSION/ ASSIGNMENT (Type/ function includes: Air Tactical, Retardant, Recon, Personnel Transport, Bucket Operations, SAR, etc.)					
TYPE/FUNCTION	PRIORITY	NAME OF PERSONNEL OR CARGO (If applicable) or instructions for tactical aircraft	MISSION START	FLY FROM	FLY TO
Medevac		<b>** See Medical Plan in IAP – Review during Division Breakouts**</b>	TBD	###	Fire
Water Drops		As needed and approved by Ops.	TBD	FNF Hellbase	Fire
Reconnaissance		Fire reconnaissance flights as approved by Ops. AMOC 800-553-9072/Canpass 888-226-7277	TBD	FNF Hellbase	Fire
		<b>Note:</b> Starting 9/10/18, Minuteman Aviation resumes flying construction materials from Nyack, MT to the Sperry Chalet construction site.			

Hellbase, Dip Sites, Pick Up Sites, etc.		Hellbase, Dip Sites, Pick Up Sites, etc.	
KOA Hellbase: N48° 27.743' x W113° 59.443' (elevation 3,423')		Lake McDonald (Howe) N48° 34.629' x W113° 55.336' (elevation 3,163')	
H-100 (Paola) N48° 19.203' W113° 38.037' (elevation 3,763')		<b>*Glacier NP: Upper Howe Lake is approved for a dip site but only dip from the center of the lake to protect shore bird nesting areas.</b>	
H-145 (Paola) N48° 24.897' W113° 40.143' (elevation 3,797')			
H-1 (Howe) N48° 37.035' x W113° 52.709' (elevation 3,191')		<b>*Upper Howe Lake N48° 36.388' W113° 59.303' (elevation 4,112')</b>	
H-2 (Howe) N48° 38.7572' W113° 50.7843' (elevation 3,304')		Wilderness Lake (Paola): N48° 48.876' W113° 44.158' (elevation 6,620')	
H-55 (Howe) N48° 35.505' W114° 01.330' (elevation 3,918')		Diekey Lake (Paola): N48° 17.004' W113° 43.060' (elevation 6,017')	
H-400 (Boundary) N48° 59.710 W113° 54.304 (elevation 4,215)		Arrow Lake (Howe) N48 42.418' W1113 53.095' (elevation 4,079')	
H-401 (Boundary) N48° 57.517 W113° 53.545 (elevation 4,200)			
U-450 48° 59.737 W113° 56.070 (Elevation 4,500) T3 Only		Parks Canada Waterton Office Helipad N49°03.9132' W113°54.1709' (Elevation 4220')	
H-100 (Paola) N48° 19.203' W113° 38.037' (elevation 3,763')			

Wind Restrictions

Flights above ground level		Flight Permitted in Winds		
		Less than / Maximum Gust Spread		
More than 500' AGL	Type 1 Helicopters	<50kts / Gusts: N/A	Type 2 Helicopters	<50kts / Gusts: N/A
Less than 500' AGL	Type 1 Helicopters	<40kts / Max Gust Spread: 15kts	Type 2 Helicopters	<40 kts / Max Gust Spread: 15kts
	Type 3 Helicopters		Type 3 Helicopters	<30kts / Max Gust Spread: 15kts

# SAFETY MESSAGE/PLAN (ICS 208)

<b>1. Incident Name:</b> Boundary Fire and Howe Fire	<b>2. Operational Period:</b> Date From: 9/26/18 Time From: 0700	Date To: 9/28/18 Time To: 2000
--	---	-----------------------------------

**3. Safety Message/Expanded Safety Message, Safety Plan, Site Safety Plan:**

## Major Hazards and Risks:

- **BEARS:** Read and follow Flathead National Forest Bear Safety, Bear Spray handout, and JHA. Carry bear spray when appropriate. Maintain food and trash storage discipline at all times.
- **HAZARD TREES:** Keep a strong situational awareness of potential hazard trees in your work area and re-evaluate as your location and conditions change. Snags and fire weakened green trees are both major hazards. Fire impacted trees have been known to fall without warning and seemingly without reason. Maintain strong situational awareness
- **DRIVING:** Driving on the incident is complicated by the large amount of public traffic in and around the fire area. Numerous areas that have been closed in the past weeks due to the fire are now being reopened. The hazards from the public traffic are increased due to distractions from the fire, wildlife, the beautiful views and generally driving on mountain roads.
- **DEMOB & TRAVEL:** A long fire season, long assignments, long shifts, lack of sleep and fatigue all impact your sleep cycles and your ability to safely drive home or even to a local airport. Work to mitigate the risk by meeting work rest guidelines, getting proper nutrition, sharing driving tasks, keeping a co-pilot awake while driving, monitor the driver and taking breaks as needed.

XX


## Peer Accountability

Leaders create teams in which team members hold each other accountable. More than any system of reward and discipline, more than any policy, the commitment to respect teammates and peers and the unwillingness to let them down represents the most effective means of accountability.

Peer accountability is an outgrowth of trust, respect and commitment. We set the example by demonstrating that team members can hold us accountable, encouraging them to give us feedback on our own performance in meeting stated goals.

Accountability to self and peers challenges team members to improve beyond perceived personal limitations and is often a catalyst to achieving personal breakthroughs.

**“Your purpose in life is to find your purpose and give your whole heart and soul to it”**  
— Buddha


<b>4. Prepared by:</b> Name: Bobby Sutton	Position/Title: SOF2	Signature: 
ICS 208	IAP Page ____	Date/Time: 9/25/18 @ 0700




## MEDICAL PLAN (ICS 206 WF)

1. Incident/Project Name		2. Operational Period				
<b>HOWE RIDGE and BOUNDARY</b>		Date/Time <b>09-26-2018 / Day 0700-2000</b> <b>09-27-2018 &amp; 9-28-2018</b>				
3. Ambulance Services						
Name	Complete Address	Phone & EMS Frequency		Advanced Life Support (ALS) Yes No		
Three Rivers Ambulance	31 7 <sup>th</sup> St W Columbia Falls, MT	Call 911 (406)-892-4244		Yes		
Evergreen Fire Dept	2236 Hwy 2 East Kalispell, MT	Call 911 (406)-752-4636		Yes		
Whitefish Fire Dept (Call to Confirm Availability)	275 Flathead Ave Whitefish, MT	Call 911 (406)-863-2483		Yes		
4. Air Ambulance Services						
Name	Phone	Type of Aircraft & Capability				
ALERT AIR AMBULANCE	Call 911	Bell 407, Paramedic, flight nurse, Night Vision. Talk on A/G Tan. Alert 1 is rotor wing N407VS. Alert 2 is fixed wing.				
MERCY FLIGHT Benefits Hospital out of Great Falls, MT	Call 911	Fixed wing and Rotary wing. Paramedic and flight nurse. Night vision. Talk on A/G Tan.				
TWO BEAR AIR (Hoist Ship) search and rescue	Call 911	Bell 429 Rotary wing. Rescue and hoist, Night Vision. Paramedic on board. Will extract & deliver to an ambulance for transport. Weight Limit=600lbs; Cable Length=280ft. Talk on A/G Tan.				
5. Hospitals						
Name Complete Address	GPS Datum – WGS 84 Coordinate Standard Degrees Decimal Minutes DD° MM.MMM' N - Lat DD°MM.MMM' W - Long	Travel Time From ICP Air Gnd		Phone	Helipad Yes No	Level of Care Facility
Kalispell Regional Medical Center 310 Sunny View Lane, Kalispell, MT 59901	Lat	N 48° 12.888'		406-752-1733 (E.D.)  Fax: 406-756-4717	Yes	Level 3
	Long	W 114° 19.4220'				
	VHF	155.3400 Tan Direct to Hospital: 155.280 White				
North Valley Hospital 1600 Hospital Way Whitefish, MT 59937	Lat	N 48° 22.842		406-863-3500	Yes	Level 4
	Long	W 114° 19.866				
	VHF	155.3400 Tan				
Harbor View Medical Center 325 9 <sup>th</sup> Ave. Seattle, WA. 98104	Lat	N 47 36.264		206-744-3000  Fax: 206-744-2655	Yes	LEVEL 1 TRAUMA BURN CENTER
	Long	W 122 19.410				
	VHF	155.3400 Tan				
Providence St. Patrick Hospital 500 W. Broadway Missoula, MT 59802	Lat	N 46° 52.542		406-329 -5635 ext. 1	Yes	LEVEL 2
	Long	W 114° 00.000				
	VHF	155.3400 Tan				
Pincher Creek Health 1222 Bev McLachlin Dr AB T0K 1W0 Alberta, Canada	Lat	N 49° 29.598		403-627-1234	Yes	LEVEL 3
	Long	W 113° 56.820				
	VHF	155.3400 Tan				

## MEDICAL PLAN (ICS 206 WF)

6. Division Branch   Group	Area Location Capability	***ALL TIMES APPROXIMATE***	
<b>BOUNDARY</b>	EMS Responders & Capability:	Park Service First Responders	
	Medical Emergency Channel:	Contact Command for 911 Notification	
	ETA for Ambulance to Scene:	Dependent upon location	
	Air:	45 minutes to Kalispell	
	Ground:	NPS boat on Waterton to awaiting Ambulance, depending upon location	
<b>HOWE RIDGE DIV A/C/E</b>	EMS Responders & Capability:	Park Service First Responders	
	ETA for Ambulance to Scene:	45 minutes	
	Air:	15 minutes to Kalispell	
	Ground:	75 minutes to Kalispell	
Connie Weeks MEDL <i>Connie Weeks</i>	09/25/2018	Bob Sutton SOF2 	09/25/2018

INCIDENT RADIO COMMUNICATIONS PLAN I-205		1. INCIDENT NAME		2. DATE/TIME PREPARED		3. OPERATIONAL PERIOD DATE/TIME					
Howe Ridge, Boundary		Howe Ridge, Boundary		9/24/2018		9/25-29/2018					
4. BASIC RADIO CHANNEL UTILIZATION											
Ch #	Function	Channel Name	Assignment	RX Freq	N/W	RX Tone/NAC	TX Freq	N/W	TX Tone/NAC	Mode Analog (A) Digital (D) Mixed (M)	Remarks
1	TAC	PKWD1-D	ALL	167.0250	N		166.3750	N	156.7	D	
2	TAC	PKWD2-A	ALL	167.0250	N		162.1625	N	156.7	A	
3	TAC	TAC-1	ALL	166.9750	N	173.8	166.9750	N	173.8	A	
4											
5											
6	FLTHD NF	DESERT	Howe Ridge	173.1125	N		164.3750	N	107.2	A	Desert Mtn
7											
8											
9											
10											
11											
12											
13	FLATHEAD A/G	FNF A/G	ALL	169.1250	N		169.1250	N	141.3	A	Flathead NF A/G
14	MEDEVAC(TAN)	TAN	Medivac	155.3400	N		155.3400	N	156.7	A	Air Ambulance/Ground Ambulance
15	A/G Howe Ridge	A/G HOWE	Howe Ridge	168.3750	N		168.3750	N		A	Howe Ridge A/G
16	AIRGUARD	AIRGUARD		168.6250	N		168.6250	N	110.9	A	Air Emergency
5. Special Instructions:								All Command Repeaters are Linked together. Check Coms before you engage and if necessary use human repeater.			
6. I-205 Prepared By: Communications Unit Leader						Name: Todd Orr		Signature: 			



# Map QR Codes



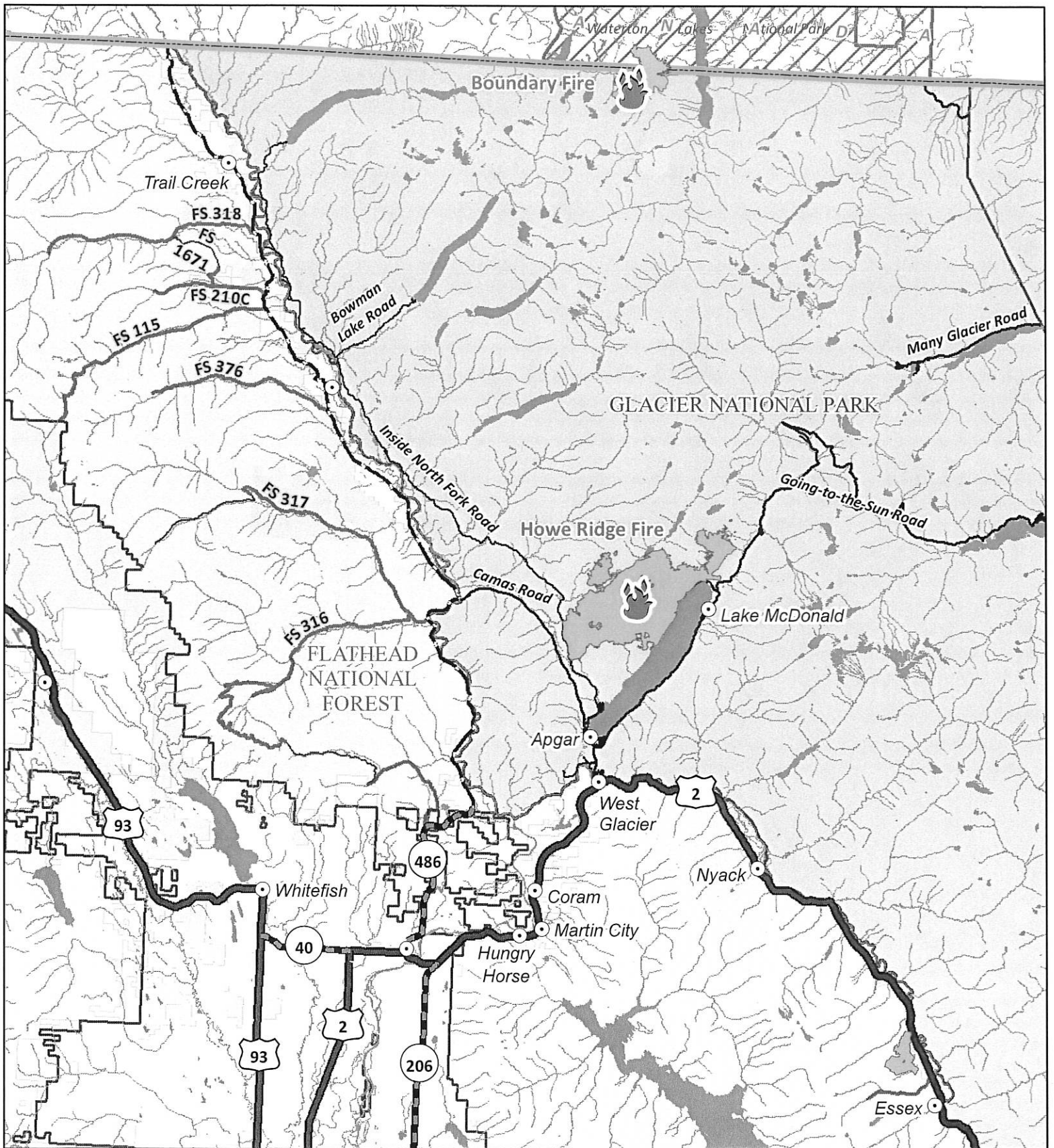
Howe Ridge Operations Map



Boundary Operations Map

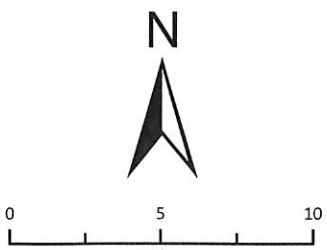


Howe Ridge Boundary  
Overview Map



### Transportation Map

BOUNDARY (MT-GNP-473) 2,911 acres as of 9/12/18 @ 0400  
 HOWE RIDGE (MT-GNP-369) 14,522 acres as of 9/14/18 @ 0030



- |  |                 |  |                     |
|--|-----------------|--|---------------------|
|  | US Highway      |  | FNF Public Roads    |
|  | State Highway   |  | FNF Admin Roads     |
|  | North Fork Road |  | GNP Primary Roads   |
|  |                 |  | GNP Secondary Roads |



## ASSIGNMENT-SPECIFIC MEDICAL EMERGENCY ACTION PLAN

What are the likely hazards that could cause injuries? What kind of severe injuries?		
Who is the likely in-charge DIVS or overhead for an emergency in your assigned area today? (i.e. "Division Zulu")		
Who are the Medical personnel assigned to your part of the incident? What are their capabilities?		
Other Emergency Responders: fire dept, crash rescue, ambulance?		
Communications: Command channel, Air to Ground, Medical helicopters, local rescue/medical?		
Transportation methods available	Ground vehicle, drop point, coordinates, travel route?	
	Aircraft I.D, helispot names, coordinates? Hoist capable, internal transport	
	Other available methods - contingency	
Most likely workforce for evacuation		

### Response checklist

#### **Who takes charge?**

- DIVS or designated Overhead manages the overall scene and evacuation process.
- Medical personnel and emergency responders manage patients and conduct rescues.
- OPS and IC make command decisions so the emergency can be given full attention and management. They continue to manage ongoing incident operations.

#### **Response sequence:**

- First, secure the scene and protect responders and patients from further injury.
- Clear the Command channel for "Emergency Traffic only" if this is a critical emergency. If not, inform Communications of non-critical-emergency status and use normal communications.
- Contact closest Medical personnel and DIVS or designated Overhead for response.
- Notify Communications to initiate Accident Action Plan response.

#### **Information for Communications: (See Medical Incident Report, page 118, IRPG)**

Type and extent of injuries?

Airway or breathing problems? Serious bleeding?

Is an EMT present or needed? Are Paramedics (Advanced Life Support) needed?

Specific location of patients (Lat/Long, access route, DP#, helicopter Landing Zone)?

What type of transport is needed? Helicopter medevac, hoist, ambulance or ground transport?

Name of contact person in charge of the scene.

Do not use names of patients at any time.

**Medical Emergency Responders confer with Medical Unit Leader and DIVS or designated Overhead to determine if this is a critical emergency and what type of transport is needed.**



**Medical Incident Report**

**FOR A NON-EMERGENCY INCIDENT, WORK THROUGH CHAIN OF COMMAND TO REPORT AND TRANSPORT INJURED PERSONNEL AS NECESSARY.**

**FOR A MEDICAL EMERGENCY: IDENTIFY ON SCENE INCIDENT COMMANDER BY NAME AND POSITION AND ANNOUNCE "MEDICAL EMERGENCY" TO INITIATE RESPONSE FROM IMT COMMUNICATIONS/DISPATCH.**

*Use the following item to communicate situation to communications/dispatch.*

**CONTACT COMMUNICATIONS / DISPATCH (Verify correct frequency prior to starting report) Ex: "Communications, Div. Alpha. Standby for Emergency Traffic."**

**INCIDENT STATUS:** *Provide incident summary (including number of patients) and command structure.*

*Ex: "Communications, I have a Red priority patient, unconscious, struck by a falling tree. Requesting air ambulance to Forest Road 1 at (Lat./Long.) This will be the Trout Meadow Medical, IC is TFLD Jones. EMT Smith is providing medical care."*

Severity of Emergency / Transport  Priority	<input type="checkbox"/> <b>RED / PRIORITY 1</b> Life or limb threatening injury or illness. Evacuation need is <b>IMMEDIATE</b> <i>Ex: Unconscious, difficulty breathing, bleeding severely, 2° – 3° burns more than 4 palm sizes, heat stroke, disoriented.</i> <input type="checkbox"/> <b>YELLOW / PRIORITY 2</b> Serious Injury or illness. Evacuation may be <b>DELAYED</b> if necessary. <i>Ex: Significant trauma, unable to walk, 2° – 3° burns not more than 1-3 palm sizes.</i> <input type="checkbox"/> <b>GREEN / PRIORITY 3</b> Minor Injury or illness. <b>Non-Emergency transport</b> <i>Ex: Sprains, strains, minor heat-related illness.</i>
Nature of Injury or Illness & Mechanism of Injury	Brief Summary of Injury or Illness <i>(Ex: Unconscious, Struck by Falling Tree)</i>
Transport Request	Air Ambulance / Short Haul/Hoist Ground Ambulance / Other
Patient Location	Descriptive Location & Lat. / Long. (WGS84)
Incident Name	Geographic Name + "Medical" <i>(Ex: Trout Meadow Medical)</i>
On-Scene Incident Commander	Name of on-scene IC of Incident within an Incident <i>(Ex: TFLD Jones)</i>
Patient Care	Name of Care Provider <i>(Ex: EMT Smith)</i>

**3. INITIAL PATIENT ASSESSMENT:** *Complete this section for each patient as applicable (start with the most severe patient)*

Patient Assessment: See IRPG page 106

Treatment:

**4. TRANSPORT PLAN:**

Evacuation Location *(if different): (Descriptive Location (drop point, intersection, etc.) or Lat. / Long.)* Patient's ETA to Evacuation Location:

Helispot / Extraction Site Size and Hazards:

**5. ADDITIONAL RESOURCES / EQUIPMENT NEEDS:**

*Example: Paramedic/EMT, Crews, Immobilization Devices, AED, Oxygen, Trauma Bag, IV/Fluid(s), Splints, Rope rescue, Wheeled litter, HAZMAT, Extrication*

**6. COMMUNICATIONS:** Identify State Air/Ground EMS Frequencies and Hospital Contacts as applicable

Function	Channel Name/Number	Receive (RX)	Tone/NAC *	Transmit (TX)	Tone/NAC *
COMMAND					
AIR-TO-GRND					
TACTICAL					

**7. CONTINGENCY:** Considerations: *If primary options fail, what actions can be implemented in conjunction with primary evacuation method? Be thinking ahead.*

**8. ADDITIONAL INFORMATION:** *Updates/Changes, etc.*

**REMEMBER:** Confirm ETA's of resources ordered. Act according to your level of training. Be Alert. Keep Calm. Think Clearly. Act Decisively.



