

113°13'W

113°12'W

113°11'W

113°10'W

113°9'W

113°8'W

47°46'N

47°46'N

47°45'N

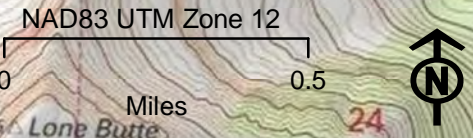
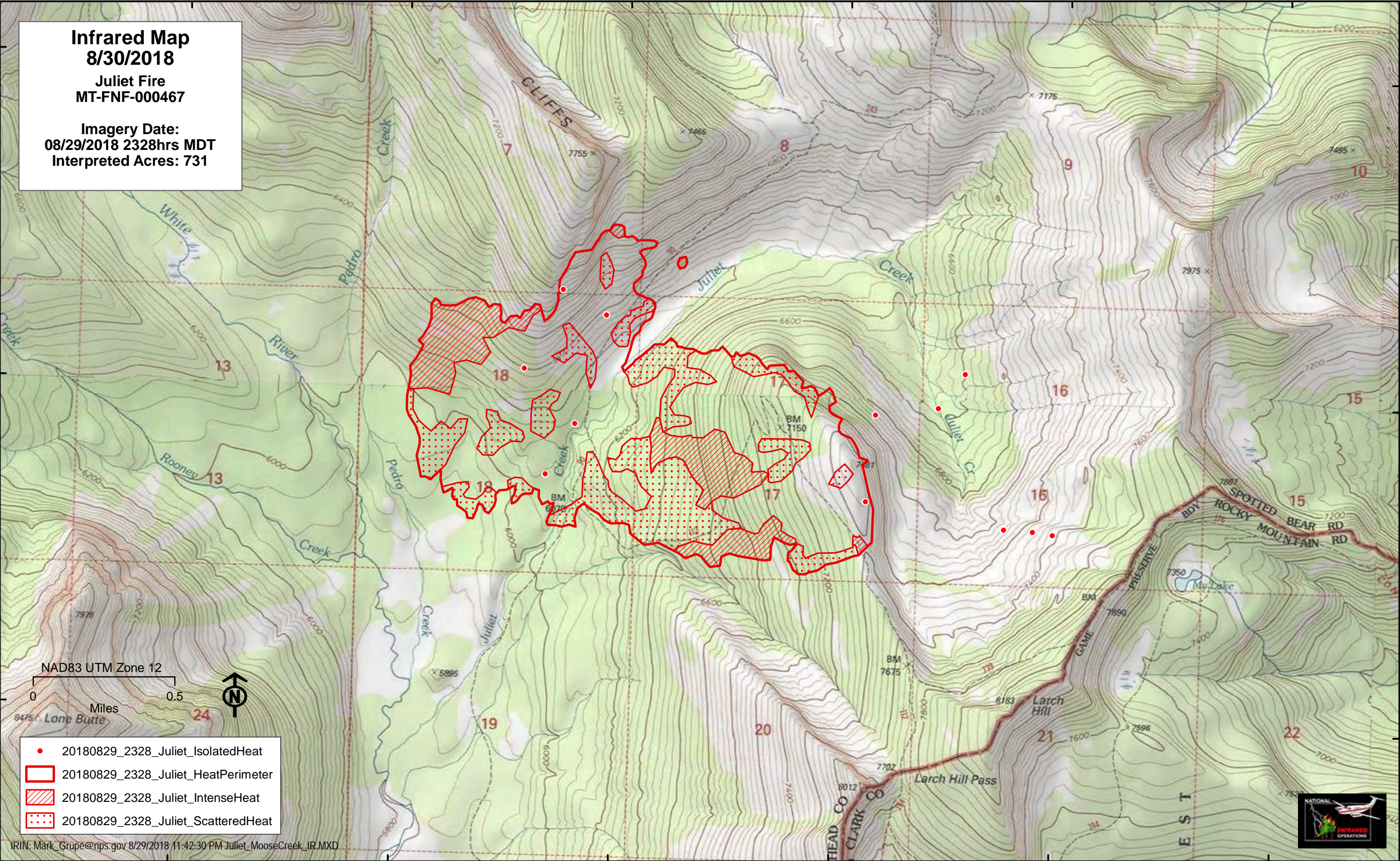
47°45'N

47°44'N

47°44'N

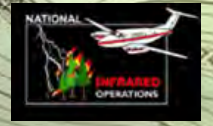
Infrared Map
8/30/2018
Juliet Fire
MT-FNF-000467

Imagery Date:
08/29/2018 2328hrs MDT
 Interpreted Acres: 731



- 20180829_2328_Juliet_IsolatedHeat
- 20180829_2328_Juliet_HeatPerimeter
- 20180829_2328_Juliet_IntenseHeat
- 20180829_2328_Juliet_ScatteredHeat

IRIN: Mark_Grupe@nps.gov 8/29/2018 11:42:30 PM Juliet_MooseCreek_IR.MXD



113°13'W

113°12'W

113°11'W

113°10'W

113°9'W

113°8'W