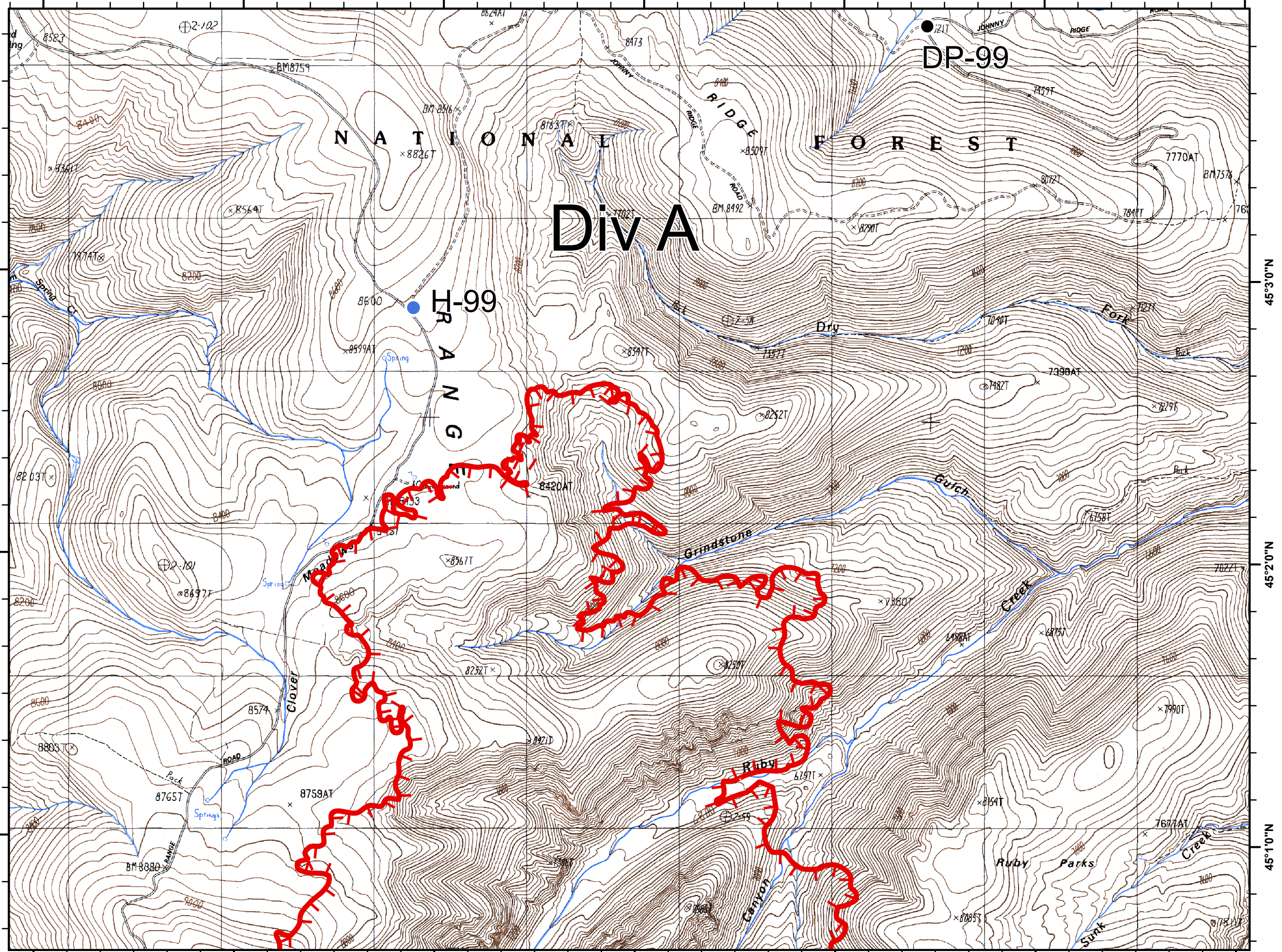


111°52'0"W 111°51'0"W 111°50'0"W 111°49'0"W 111°48'0"W 111°47'0"W 111°46'0"W



MONUMENT FIRE

Incident Action Plan Map

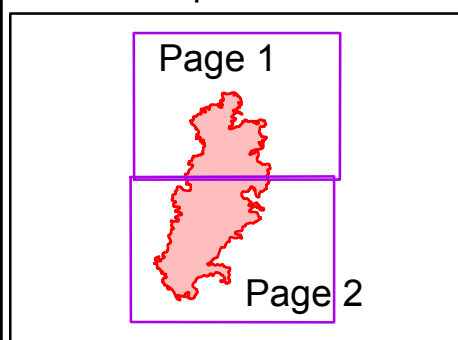
MT-BDF-3284
Aug 17, 2018

Page 1 of 2



- Division
- Drop Point
- Helispot
- Uncontrolled Fire Edge
- Proposed Dozer Line

Map Index



LACo GISS E. Lamas

111°52'0"W 111°51'0"W 111°50'0"W 111°49'0"W 111°48'0"W 111°47'0"W 111°46'0"W

111°52'0"W 111°51'0"W 111°50'0"W 111°49'0"W 111°48'0"W 111°47'0"W

45°0'0"N

45°0'0"N

44°59'0"N

44°59'0"N

44°58'0"N

44°58'0"N

111°52'0"W 111°51'0"W 111°50'0"W 111°49'0"W 111°48'0"W 111°47'0"W

MONUMENT FIRE

Incident Action Plan Map

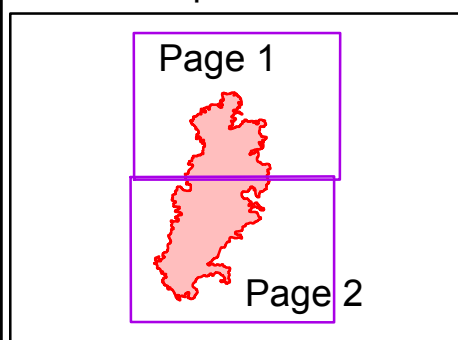
MT-BDF-3284
Aug 17, 2018

Page 2 of 2



- Division
- Drop Point
- Helispot
- Uncontrolled Fire Edge
- Proposed Dozer Line

Map Index



QR Code

North arrow and scale bar (0 to 0.5 miles)

LACo GISS E. Lamas

