

MONUMENT FIRE

AirOps Map

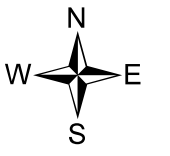
MT-BDF-3284

Aug 23, 2018

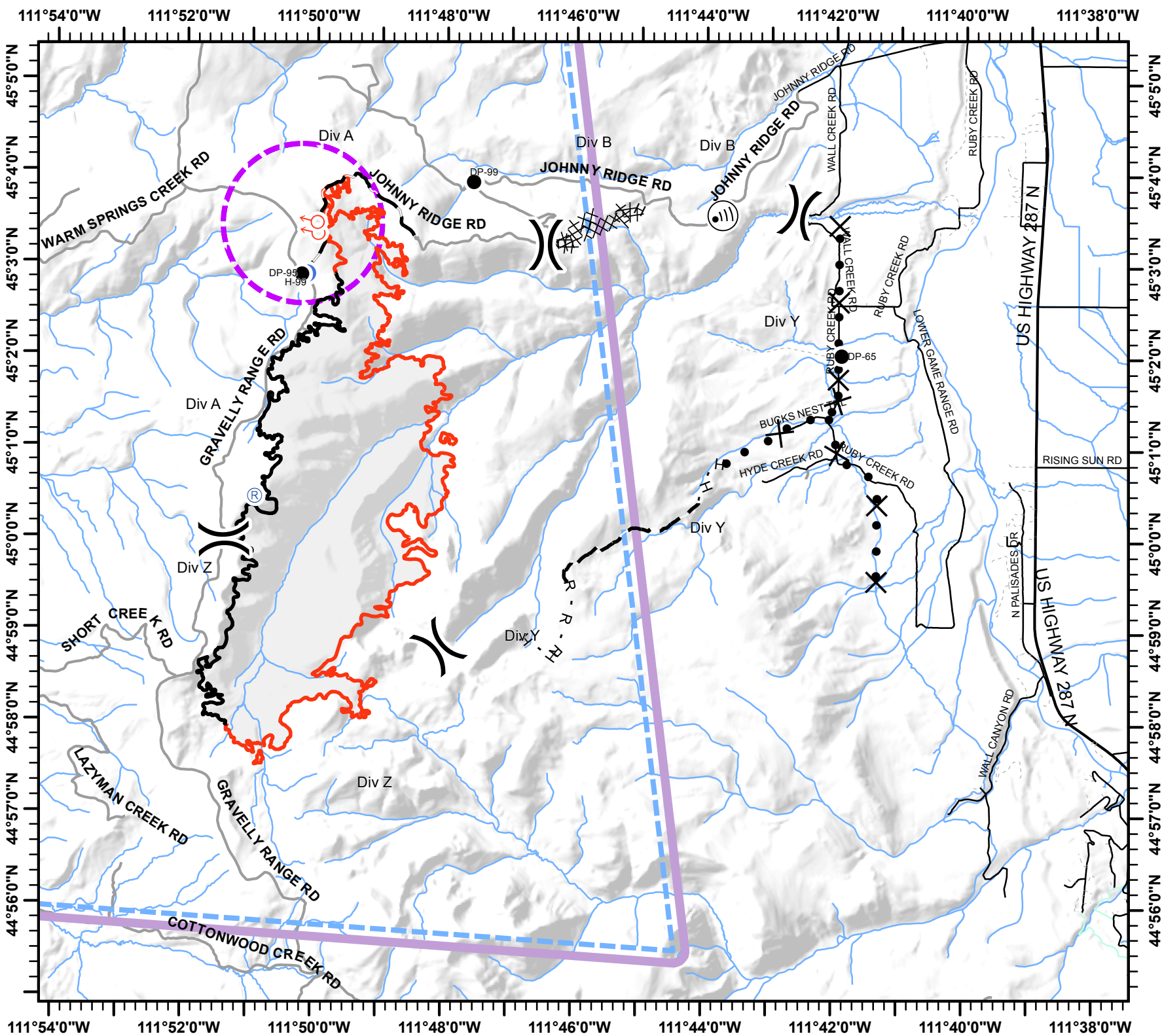


- Division
- Drop Point
- Helispot
- Repeater
- Cell Tower
- Spot Fire
- Uncontrolled Fire
- Fire Edge
- Completed Line
- Proposed Dozer Line
- Completed Dozer Line
- Planned Fire Line
- TFR 8/1602
- UAS ROZ AREA

QR Code



LACo GISS E. Lamas



Monument Fire			
Feature Category	Label	Latitude	Longitude
Drop Point	DP-99	45° 3.893' N	111° 47.583' W
Drop Point	DP-95	45° 2.869' N	111° 50.217' W
Drop Point	DP-65	45° 2.023' N	111° 41.899' W
Helispot	H-99	45° 2.880' N	111° 50.136' W
Cell Tower	<Null>	45° 3.508' N	111° 43.674' W
Repeater	<Null>	45° 0.446' N	111° 50.913' W