

113°8W

113°6W

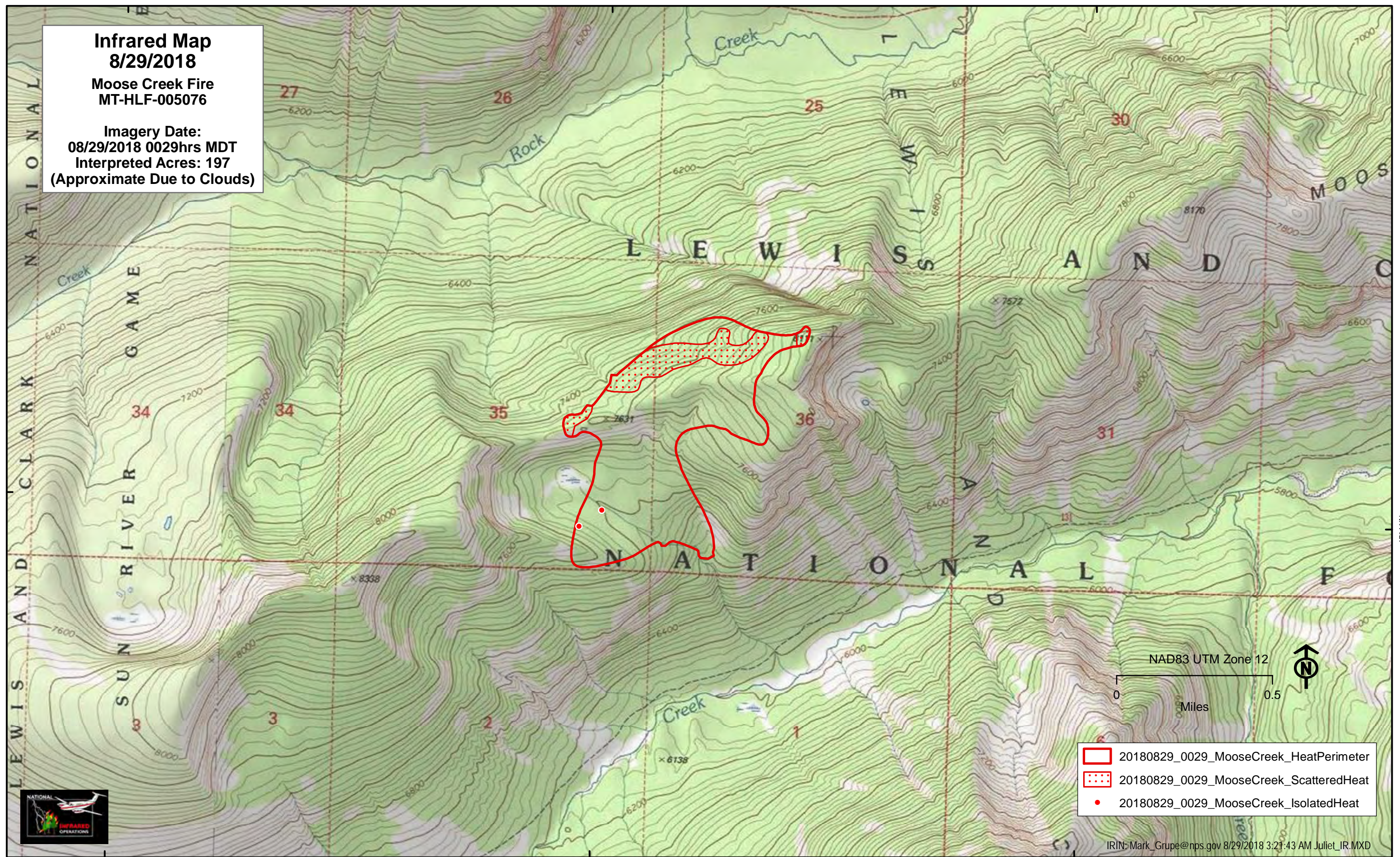
113°4W

Infrared Map
8/29/2018
Moose Creek Fire
MT-HLF-005076

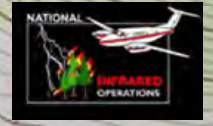
Imagery Date:
 08/29/2018 0029hrs MDT
 Interpreted Acres: 197
 (Approximate Due to Clouds)

47°41N

47°41N



- 20180829_0029_MooseCreek_HeatPerimeter
- 20180829_0029_MooseCreek_ScatteredHeat
- 20180829_0029_MooseCreek_IsolatedHeat



IRIN: Mark_Grupe@nps.gov 8/29/2018 3:21:43 AM Juliet_IR.MXD

113°8W

113°6W

113°4W