

113°8'W

113°7'W

113°6'W

113°5'W

113°4'W

113°3'W

47°43'N

47°43'N

47°41'N

47°41'N

47°41'N


47°41'N

# Infrared Map 8/30/2018


## Moose Creek Fire MT-HLF-005076





Imagery Date:  
08/29/2018 2328hrs MDT  
Interpreted Acres: 207

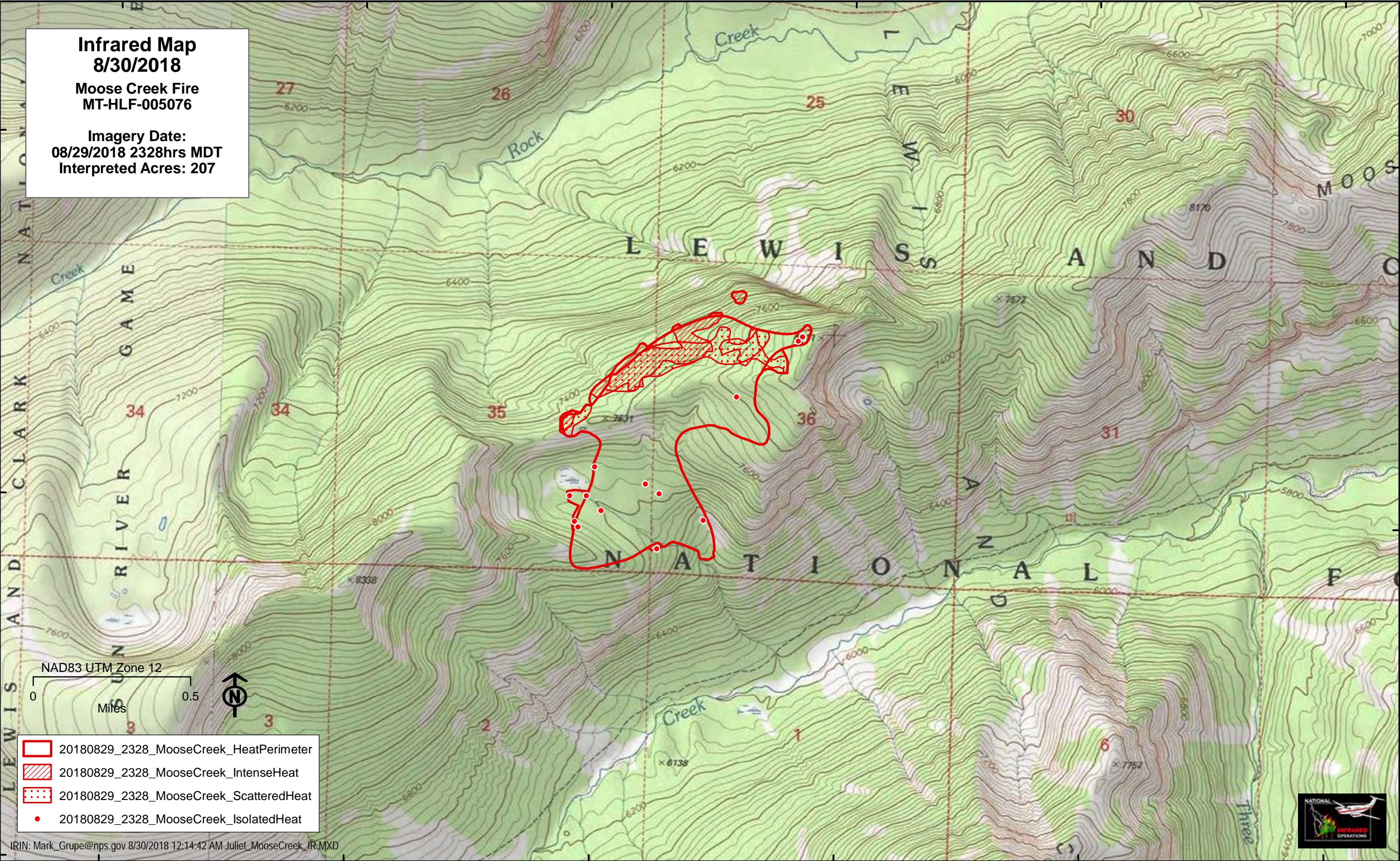
NAD83 UTM Zone 12



0 0.5 Miles



	20180829_2328_MooseCreek_HeatPerimeter
	20180829_2328_MooseCreek_IntenseHeat
	20180829_2328_MooseCreek_ScatteredHeat
	20180829_2328_MooseCreek_IsolatedHeat



IRIN: Mark\_Grupe@nps.gov 8/30/2018 12:14:42 AM Juliet\_MooseCreek\_IR.MXD



113°8'W

113°7'W

113°6'W

113°5'W

113°4'W

113°3'W