

INFRARED INTERPRETER'S DAILY LOG

Incident Name: Paola Ridge MT-FNF-000374	IR Interpreter: Tammy Hocut thocut@fs.fed.us	Local Dispatch Phone: Kalispell 406-758-5260	Interpreted Size: 566 acres Growth last period: 202 acres
Flight Time: 2059 MDT Flight Date: 8/20/2018	Interpreter location: Wenatchee, WA Interpreter phone: 541-255-6393	GACC IR Liaison: Tim Stauffer GACC IR Liaison Phone: 406-529-6366	National Coordinator: Jan Johnson National Coord. Phone: 208-387-5900
Ordered By: Bradly Jonston 480-296-5336 kgaiz@fs.fed.us	A Number: A-13	Aircraft/Scanner System: N144Z/Phoenix	Pilots/Techs: Johnson/Ramsay/Kazimir_Kuenzi
IRIN Comments on imagery: One imagery flight line covering entire fire – good imagery		Weather at time of flight: clear	Flight Objective: Map heat perimeter, intense heat, scattered heat, and isolated heat
Date and Time Imagery Received by Interpreter: 2147 MDT 8/20/2018		Type of media for final product: PDF maps, zipped shapefiles, IR log, and KMZ files	
Date and Time Products Delivered to Incident: 2215 MDT 8/20/2018		Digital files sent to: https://ftp.nifc.gov/public/incident_specific_data/n_rookies/2018_fires/2018_PaolaRidge/IR/20180821/	

Comments /notes on tonight's mission and this interpretation:

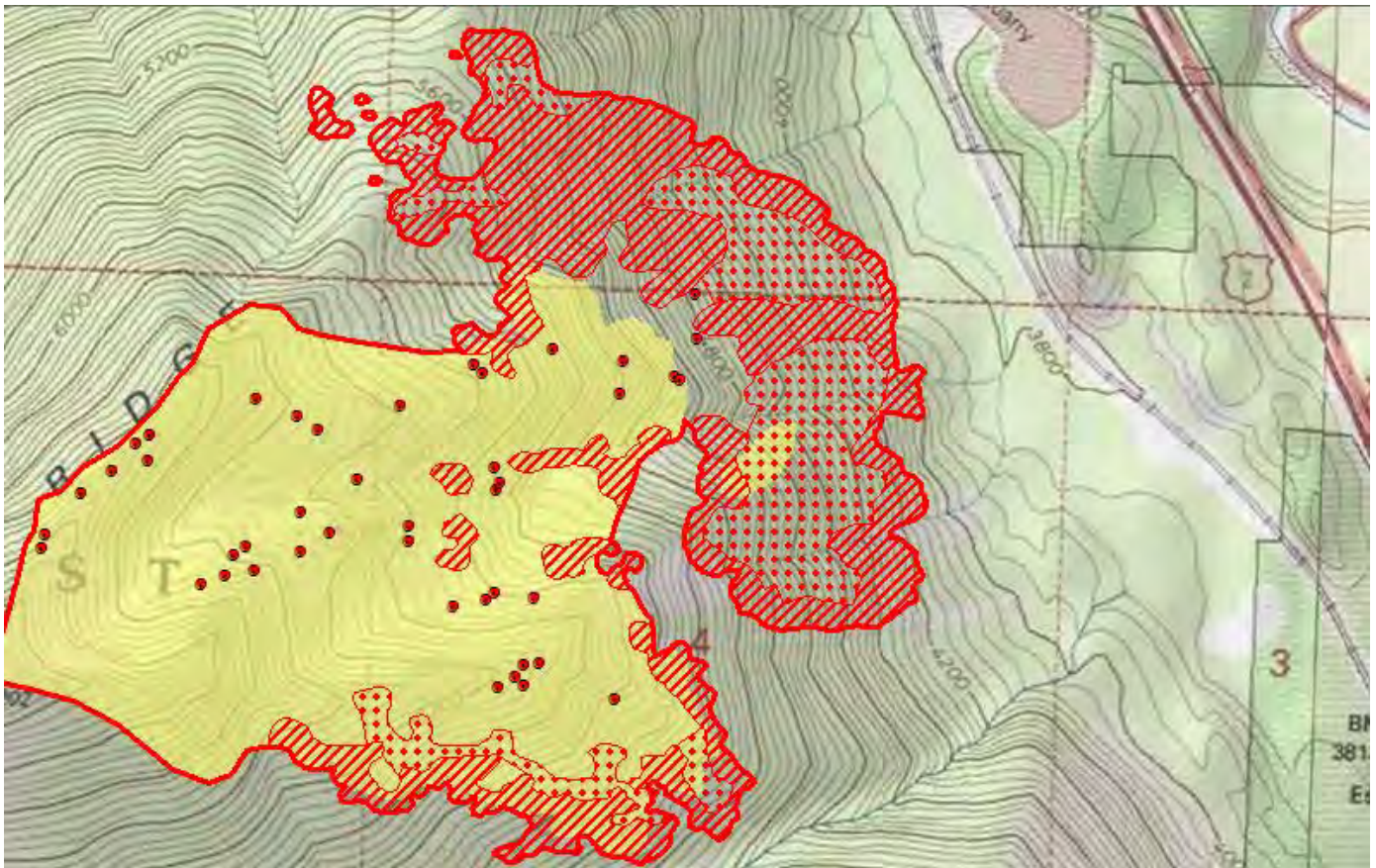
I started my interpretation from incident perimeter dated 08/19/2018 with a starting acreage of 364. New heat perimeter is 566 acres – Growth of 202 acres.

In the follow maps - Yellow is 8/19/2018's IR heat perimeter. Red line is current IR heat perimeter.

All the growth was on the east and southeast side of the fire with intense heat and new heat polygons outside the main fire perimeter on the northeast side of the fire in sections 32 and 33 south of Paola Creek.



Growth on east side of the fire is still east of railroad and quarry by approximately 0.2 of a mile.



Light isolated heat sources within the heat perimeter on the west side of the fire.

