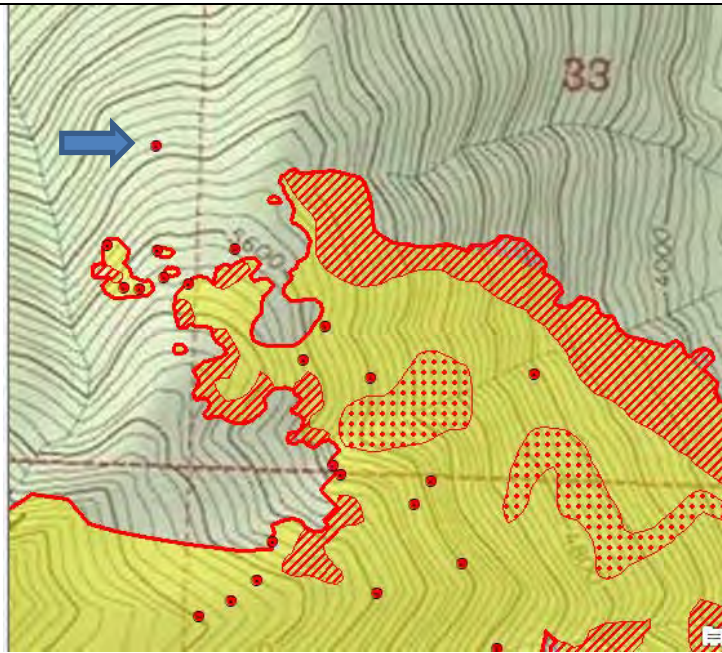
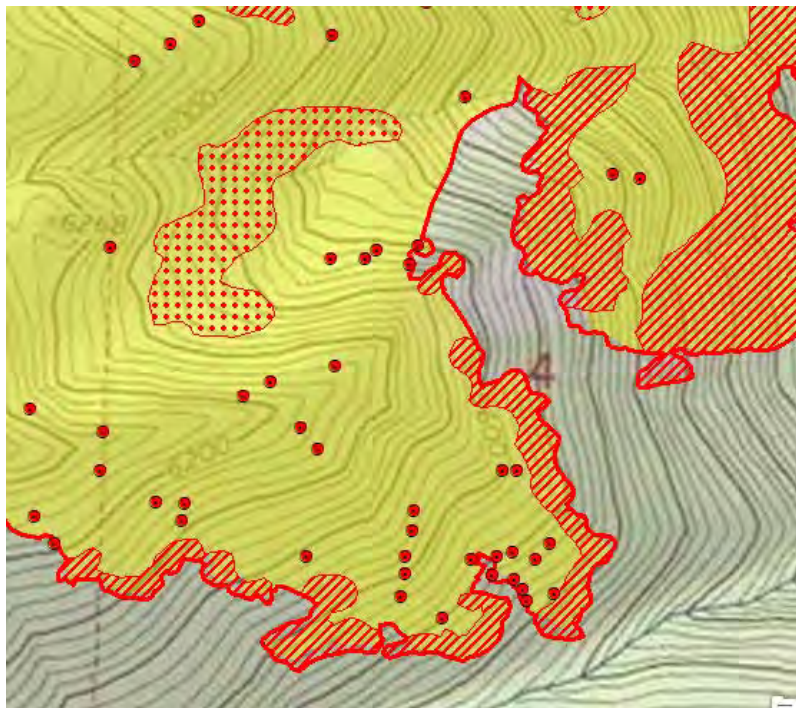


## INFRARED INTERPRETER'S DAILY LOG

<b>Incident Name:</b> Paola Ridge MT-FNF-000374	<b>IR Interpreter:</b> Tammy Hocut thocut@fs.fed.us	<b>Local Dispatch Phone:</b> Kalispell 406-758-5260	<b>Interpreted Size:</b> 578 acres <b>Growth last period:</b> 12 acres
<b>Flight Time:</b> 0142 MDT <b>Flight Date:</b> 8/22/2018	<b>Interpreter location:</b> Wenatchee, WA <b>Interpreter phone:</b> 541-255-6393	<b>GACC IR Liaison:</b> Tim Stauffer GACC <b>IR Liaison Phone:</b> 406-529-6366	<b>National Coordinator:</b> Jan Johnson <b>National Coord. Phone:</b> 208-387-5900
<b>Ordered By:</b> Bradly Jonston 480-296-5336 kgaiz@firenet.gov	<b>A Number:</b> A-14	<b>Aircraft/Scanner System:</b> N144Z/Phoenix	<b>Pilots/Techs:</b> Johnson/Ramsay/Kazimir_Kuenzi
<b>IRIN Comments on imagery:</b> One imagery flight line covering entire fire – good imagery		<b>Weather at time of flight:</b> clear	<b>Flight Objective:</b> Map heat perimeter, intense heat, scattered heat, and isolated heat
<b>Date and Time Imagery Received by Interpreter:</b> 0209 MDT 8/22/2018		<b>Type of media for final product:</b> PDF maps, zipped shapefiles, IR log, and KMZ files	
<b>Date and Time Products Delivered to Incident:</b> 0240 MDT 8/22/2018		<b>Digital files sent to:</b> <a href="https://ftp.nifc.gov/public/incident_specific_data/n_rookies/2018_fires/2018_PaolaRidge/IR/20180822/">https://ftp.nifc.gov/public/incident_specific_data/n_rookies/2018_fires/2018_PaolaRidge/IR/20180822/</a>  email: kgaiz@firenet.gov	
<b>Comments /notes on tonight's mission and this interpretation:</b>  I started my interpretation from incident perimeter dated 08/20/2018 with a starting acreage of 566. New heat perimeter is 578 acres – Growth of 12 acres.  In the follow maps - Yellow is 8/20/2018's IR heat perimeter. Red line is current IR heat perimeter.  Small amount of growth on the east half of fire. An isolated heat source north of fire in section 32 at - 113°39'23.339"W 48°19'5.969"N			



Small growth on southeast side of fire in section 4.



Light scattered heat throughout interior of fire perimeter.

