

INFRARED INTERPRETER'S DAILY LOG

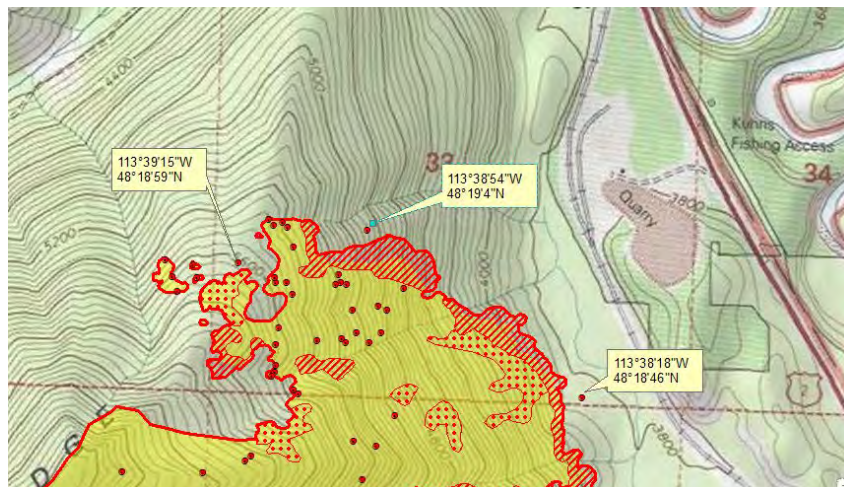
Incident Name: Paola Ridge MT-FNF-000374	IR Interpreter: Tammy Hocut thocut@fs.fed.us	Local Dispatch Phone: Kalispell 406-758-5260	Interpreted Size: 598 acres Growth last period: 20 acres
Flight Time: 2129 MDT Flight Date: 8/22/2018	Interpreter location: Jasper, AR Interpreter phone: 870-446-5878 (Landline) 870-365-2810 (Cell)	GACC IR Liaison: Tim Stauffer GACC IR Liaison Phone: 406-529-6366	National Coordinator: Jan Johnson National Coord. Phone: 208-387-5900
Ordered By: Bradly Jonston 480-296-5336 kgaiz@firenet.gov	A Number: A-15	Aircraft/Scanner System: N144Z/Phoenix	Pilots/Techs: Nelson/DeHaas/Navarro
IRIN Comments on imagery: One imagery flight line covering entire fire – good imagery		Weather at time of flight: clear	Flight Objective: Map heat perimeter, intense heat, scattered heat, and isolated heat
Date and Time Imagery Received by Interpreter: 2214 MDT 8/22/2018		Type of media for final product: PDF maps, zipped shapefiles, IR log, and KMZ files	
Date and Time Products Delivered to Incident: 2248 MDT 8/22/2018		Digital files sent to: https://ftp.nifc.gov/public/incident_specific_data/n_rockies/2018_fires/2018_PaolaRidge/IR/20180823/ email: kgaiz@firenet.gov	

Comments /notes on tonight's mission and this interpretation:

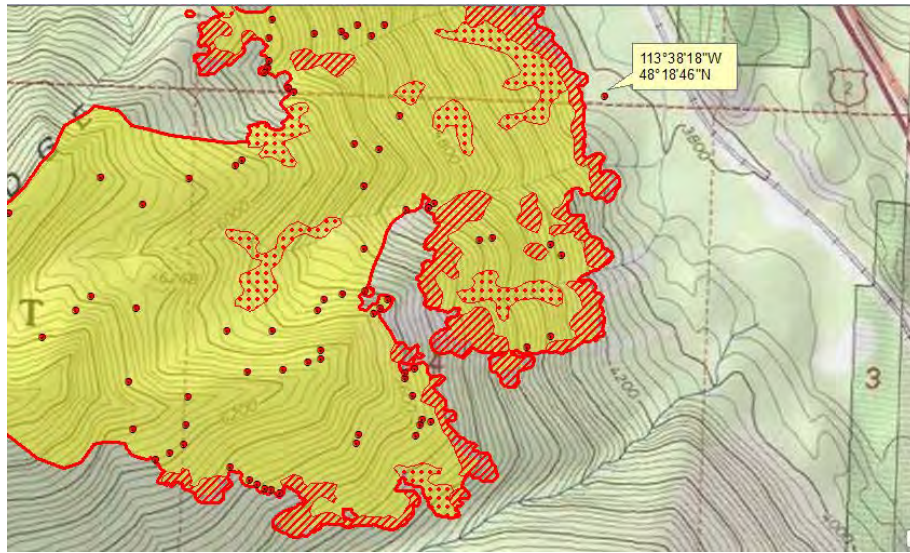
I started my interpretation from infra-red heat perimeter dated 08/22/2018 with a starting acreage of 578. New heat perimeter is 598 acres – Growth of 20 acres.

In the follow maps - Yellow is 8/22/2018's IR heat perimeter. Red line is current IR heat perimeter.

Growth was on the eastern half of the fire. On the north side of the fire in sections 32 and 33 there is growth with intense heat and a couple of isolated heat sources in wooded areas outside the main fire perimeter.



On the south and southeast side of the fire there was some growth with intense heat in section 4.



Light isolated heat sources within the heat perimeter across the fire.

