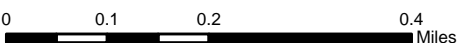


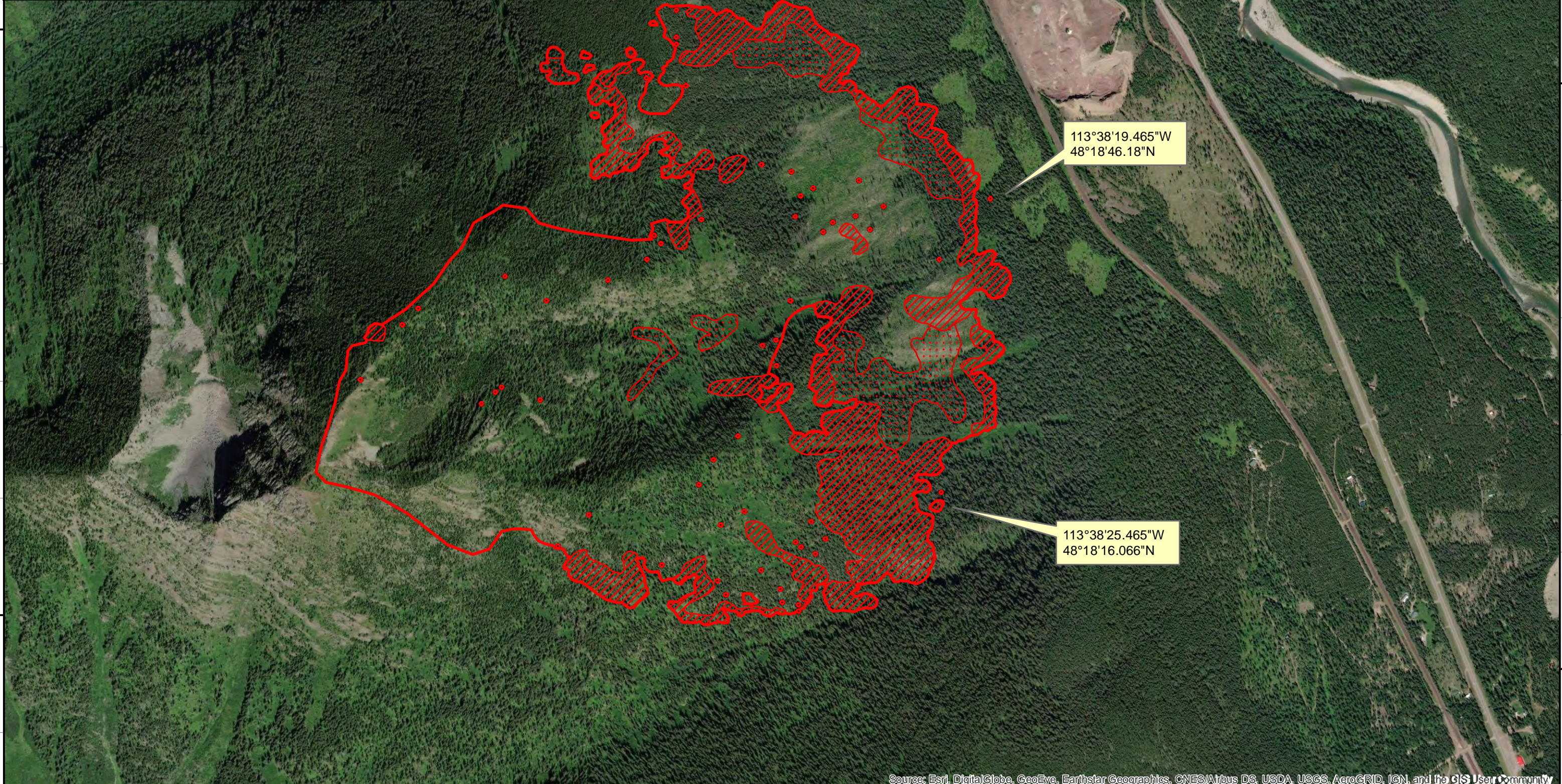


113°40'W 113°39'W 113°38'W 113°37'W

**Infrared Map**  
**Paola Ridge (MT-FNF-000374)**  
**Map Date: 08/24/2018**  
**Imagery Date: 08/24/2018**  
**Imagery Time: 0135 MDT**  
**IR Interpreted Acres: 645 acres**  
**IRIN: Tammy Hocut**

- Isolated Heat Sources
- Heat Perimeter
- Intense Heat
- Scattered Heat

NAD 1983 UTM Zone 12N

113°40'W 113°39'W 113°38'W 113°37'W