

## INFRARED INTERPRETER'S DAILY LOG

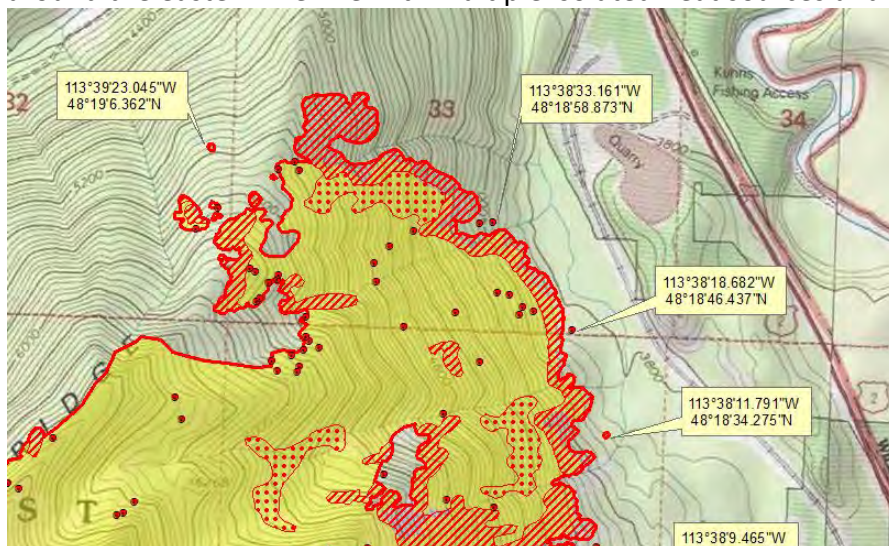
<b>Incident Name:</b> Paola Ridge MT-FNF-000374	<b>IR Interpreter:</b> Tammy Hocut thocut@fs.fed.us	<b>Local Dispatch Phone:</b> Kalispell 406-758-5260	<b>Interpreted Size:</b> 712 acres <b>Growth last period:</b> 67 acres
<b>Flight Time:</b> 2216 MDT <b>Flight Date:</b> 8/24/2018	<b>Interpreter location:</b> Jasper, AR <b>Interpreter phone:</b> 870-446-5878 (Landline) 870-365-2810 (Cell)	<b>GACC IR Liaison:</b> Tim Stauffer GACC <b>IR Liaison Phone:</b> 406-529-6366	<b>National Coordinator:</b> Jan Johnson <b>National Coord. Phone:</b> 208-387-5900
<b>Ordered By:</b> Bradly Jonston 480-296-5336 kgaiz@firenet.gov	<b>A Number:</b> A-17	<b>Aircraft/Scanner System:</b> N144Z/Phoenix	<b>Pilots/Techs:</b> Johnson/Boyce/Kuenzi
<b>IRIN Comments on imagery:</b> One imagery flight line covering entire fire – good imagery		<b>Weather at time of flight:</b> clear	<b>Flight Objective:</b> Map heat perimeter, intense heat, scattered heat, and isolated heat
<b>Date and Time Imagery Received by Interpreter:</b> 2258 MDT 8/24/2018		<b>Type of media for final product:</b> PDF maps, zipped shapefiles, IR log, and KMZ files	
<b>Date and Time Products Delivered to Incident:</b> 2344 MDT 8/24/2018		<b>Digital files sent to:</b> <a href="https://ftp.nifc.gov/public/incident_specific_data/n_rookies/2018_fires/2018_PaolaRidge/IR/20180825/">https://ftp.nifc.gov/public/incident_specific_data/n_rookies/2018_fires/2018_PaolaRidge/IR/20180825/</a>  email: kgaiz@firenet.gov	

**Comments /notes on tonight's mission and this interpretation:**

I started my interpretation from infra-red heat perimeter dated 08/24/2018 with a starting acreage of 645. New heat perimeter is 712 acres – Growth of 67 acres.

In the follow maps - Yellow is 8/24/2018's IR heat perimeter. Red line is current IR heat perimeter.

Most of the growth is on the east half of the fire. On the north side of the fire in section 32 there is a new heat polygon. There is growth with intense heat at the very north tip of the fire in section 33 all the way around the eastern fire line with multiple isolated heat sources and new heat polygons.



Growth and intense heat continues around the east side of the fire and down around the southeast part of the fire in section 4 with isolated heat sources and new heat polygons outside of the main heat perimeter.

