

## 0059 INFRARED INTERPRETER'S DAILY LOG

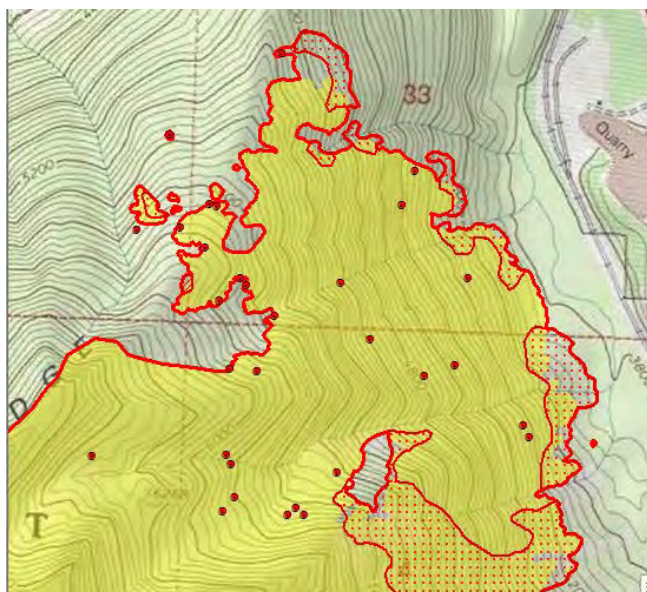
<b>Incident Name:</b> Paola Ridge MT-FNF-000374	<b>IR Interpreter:</b> Tammy Hocut thocut@fs.fed.us	<b>Local Dispatch Phone:</b> Kalispell 406-758-5260	<b>Interpreted Size:</b> 744 acres <b>Growth last period:</b> 32 acres
<b>Flight Time:</b> 0021 MDT <b>Flight Date:</b> 8/29/2018	<b>Interpreter location:</b> Jasper, AR <b>Interpreter phone:</b> 870-446-5878 (Landline) 870-365-2810 (Cell)	<b>GACC IR Liaison:</b> Tim Stauffer GACC <b>IR Liaison Phone:</b> 406-529-6366	<b>National Coordinator:</b> Jan Johnson <b>National Coord. Phone:</b> 208-387-5900
<b>Ordered By:</b> Bradly Jonston 480-296-5336 kgaiz@firenet.gov	<b>A Number:</b> A-21	<b>Aircraft/Scanner System:</b> N144Z/Phoenix	<b>Pilots/Techs:</b> Johnson/Boyce/Kuenzi
<b>IRIN Comments on imagery:</b> One imagery flight line covering entire fire – good imagery		<b>Weather at time of flight:</b> clear	<b>Flight Objective:</b> Map heat perimeter, intense heat, scattered heat, and isolated heat
<b>Date and Time Imagery Received by Interpreter:</b> 0059 MDT 8/29/2018		<b>Type of media for final product:</b> PDF maps, zipped shapefiles, IR log, and KMZ files	
<b>Date and Time Products Delivered to Incident:</b> 0136 MDT 8/29/2018		<b>Digital files sent to:</b> <a href="https://ftp.nifc.gov/public/incident_specific_data/n_rookies/2018_fires/2018_PaolaRidge/IR/20180829/">https://ftp.nifc.gov/public/incident_specific_data/n_rookies/2018_fires/2018_PaolaRidge/IR/20180829/</a> email: kgaiz@firenet.gov	

**Comments /notes on tonight's mission and this interpretation:**

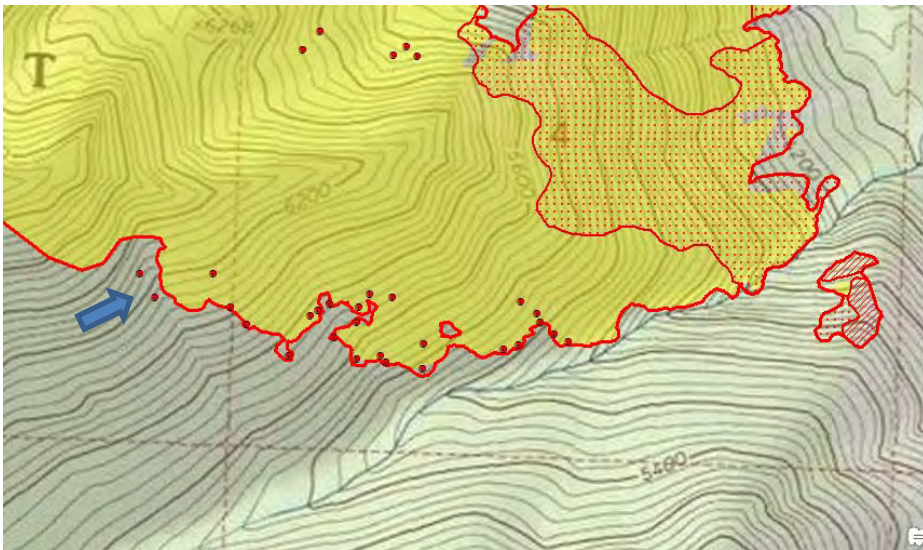
I started my interpretation from infra-red heat perimeter dated 08/25/2018 with a starting acreage of 712. New heat perimeter is 744 acres – Growth of 32 acres.

In the follow maps - Yellow is 8/25/2018's IR heat perimeter. Red line is current IR heat perimeter.

Growth was on the north and east side of the fire. Section 33 had several places with scattered heat growth.



Island polygon on the southeast side grew. There are a couple isolated heat sources outside the main heat perimeter on the south side of the fire in Section 5.



There is also an isolated heat source outside the main fire perimeter on the northwest side of the fire in section 32.

