



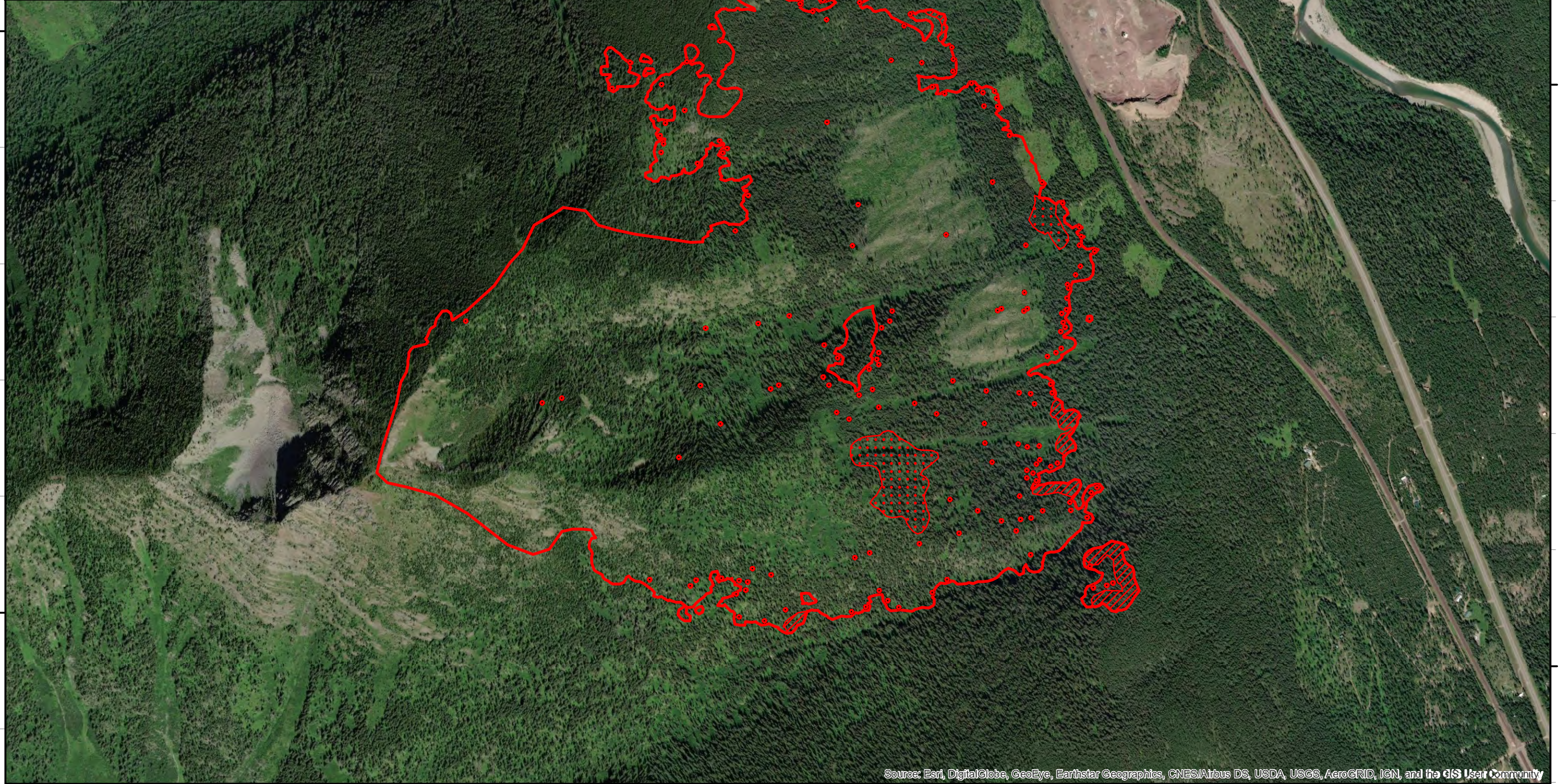
113°41'W 113°40'W 113°39'W 113°38'W

Infrared Map
Paola Ridge (MT-FNF-000374)
Map Date: 08/30/2018
Imagery Date: 08/29/2018
Imagery Time: 2337 MDT
IR Interpreted Acres: 751 acres
IRIN: Tammy Hocut

- Isolated Heat Sources
- Heat Perimeter
- Intense Heat
- Scattered Heat

NAD 1983 UTM Zone 12N

0 0.1 0.2 0.4 Miles

48°19'N

48°19'N

48°18'N

48°18'N

113°40'W 113°39'W 113°38'W 113°37'W