

Paola Ridge

MT-FNF-374
8/22/2018 Day

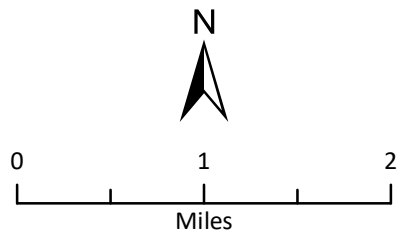
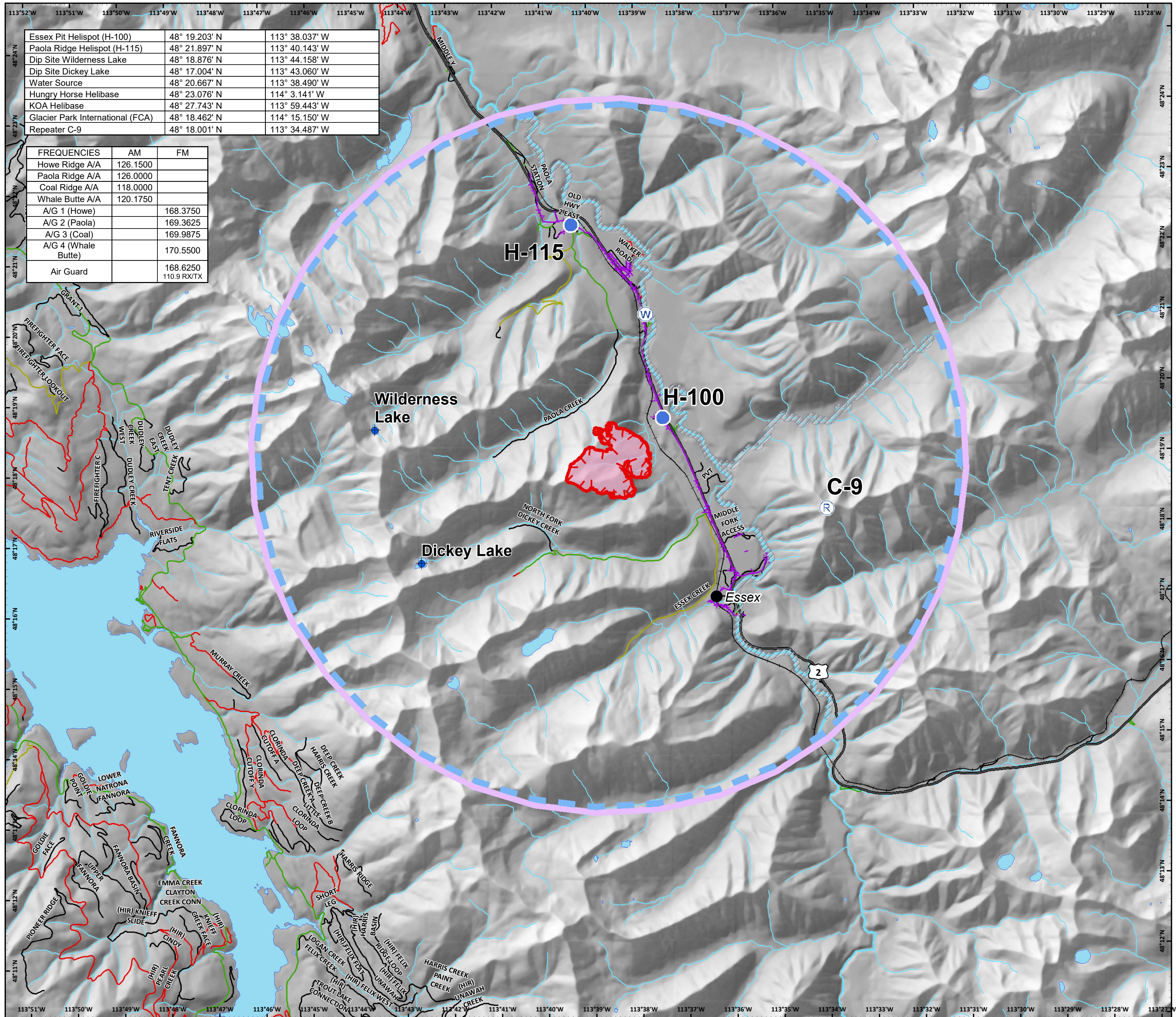
Approx 566 acres
8/20 2059hrs

Air Ops

Essex Pit Helispot (H-100)	48° 19.203' N	113° 38.037' W
Paola Ridge Helispot (H-115)	48° 21.897' N	113° 40.143' W
Dip Site Wilderness Lake	48° 18.876' N	113° 44.158' W
Dip Site Dickey Lake	48° 17.004' N	113° 43.060' W
Water Source	48° 20.667' N	113° 38.490' W
Hungry Horse Helibase	48° 23.076' N	114° 3.141' W
KOA Helibase	48° 27.743' N	113° 59.443' W
Glacier Park International (FCA)	48° 18.462' N	114° 15.150' W
Repeater C-9	48° 18.001' N	113° 34.487' W

FREQUENCIES	AM	FM
Howe Ridge A/A	126.1500	
Paola Ridge A/A	126.0000	
Coal Ridge A/A	118.0000	
Whale Butte A/A	120.1750	
A/G 1 (Howe)		168.3750
A/G 2 (Paola)		169.3625
A/G 3 (Coal)		169.9875
A/G 4 (Whale Butte)		170.5500
Air Guard		168.6250
		110.9 RX/TX

- Dip Site
- Helispot
- Repeater
- Water Source
- Uncontrolled Fire Edge
- Temporary Flight Restriction
- Wildfire Daily Fire Perimeter
- Retardant Avoidance Area
- Over Head Power Lines
- Waterbody
- Streams



Coordinate System: NAD 1983 UTM Zone 12N
Datum: North American 1983
Prepared by: Admin
8/21/2018 2144 hrs