

113°41'W

113°40'W

113°39'W

113°38'W

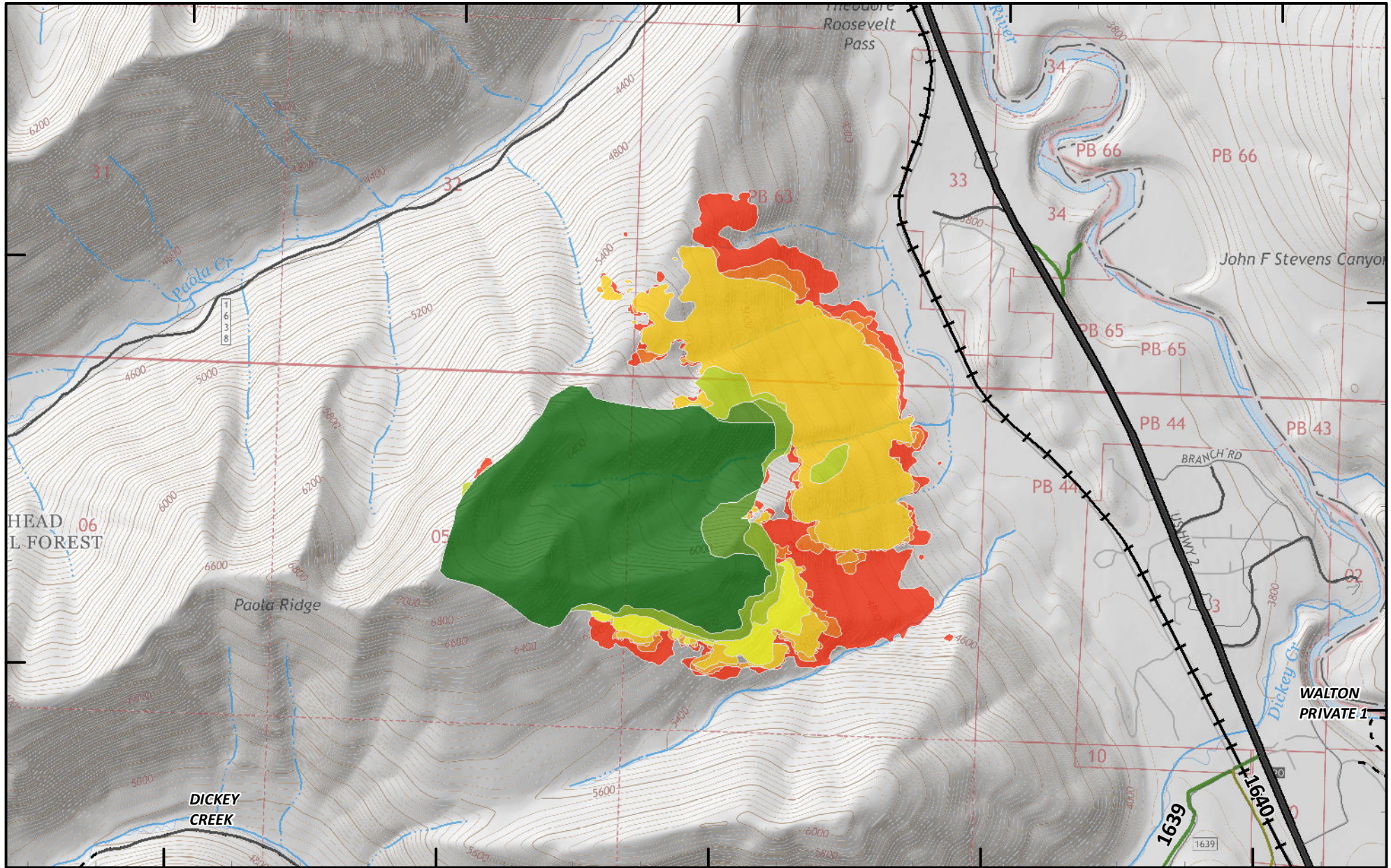
113°37'W

48°19'N

48°18'N

48°19'N

48°18'N



113°41'W

113°40'W

113°39'W

113°38'W

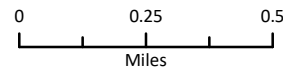
113°37'W

Date, Total Growth, Total Acres

2018-08-13, 287, 287	2018-08-20, 566, 202
2018-08-14, 302, 16	2018-08-22, 576, 10
2018-08-15, 323, 21	2018-08-23, 598, 22
2018-08-16, 343, 20	2018-08-24, 712, 114
2018-08-19, 364, 21	

Paola Ridge Fire Progression

Approx 712 acres
as of 8/24/18
2216 hrs



Coordinate System: NAD 1983 UTM Zone 12N
Datum: North American 1983
Prepared by: Admin
8/27/2018 2057 hrs

