

113°41'W

113°40'W

113°39'W

113°38'W

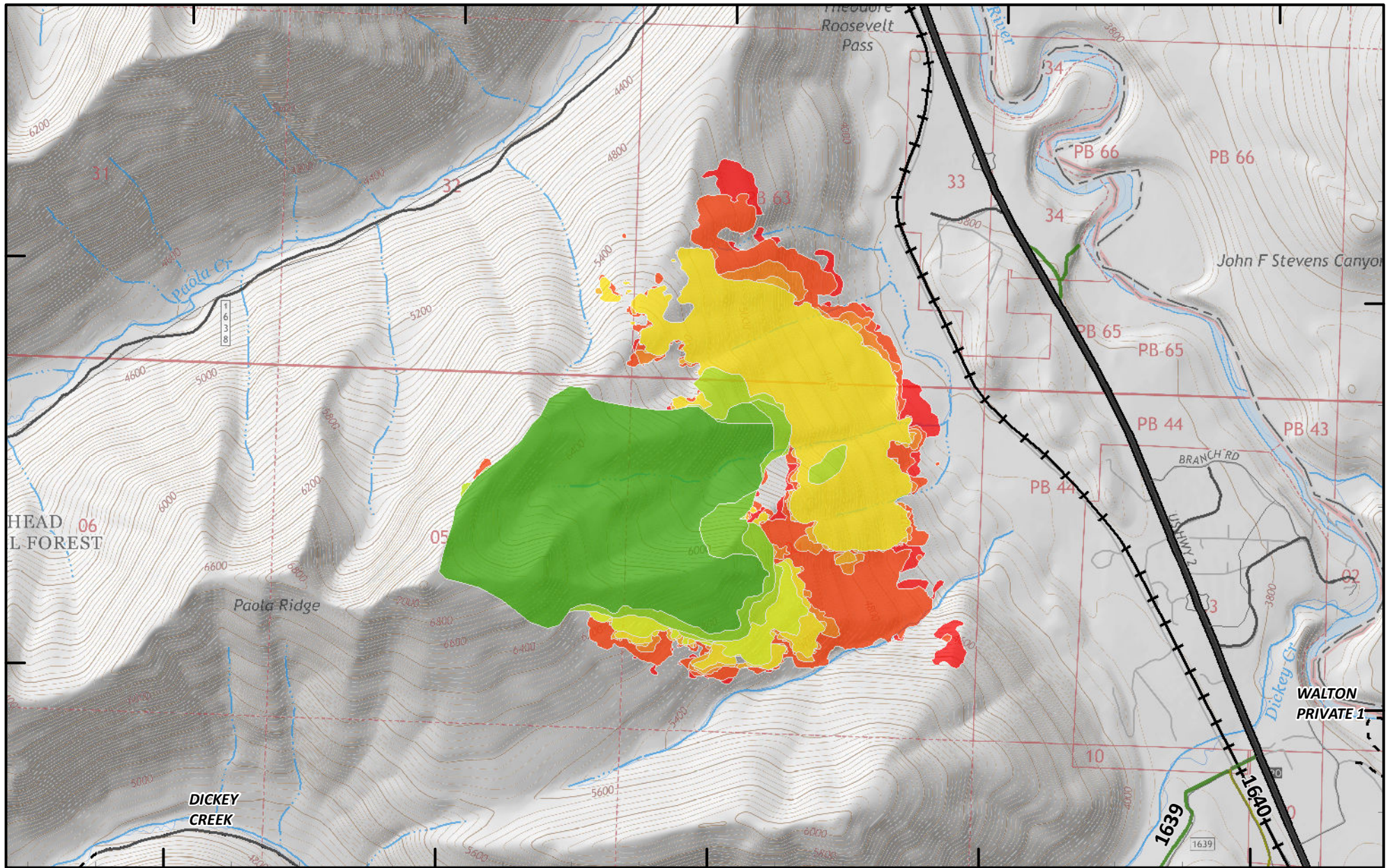
113°37'W

48°19'N

48°18'N

48°19'N

48°18'N



113°41'W

113°40'W

113°39'W

113°38'W

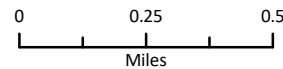
113°37'W

**Date, Total Growth, Total Acres**

2018-08-13	287 growth ac, 287 total ac	2018-08-20	202 growth ac, 566 total ac
2018-08-14	16 growth ac, 302 total ac	2018-08-22	10 growth ac, 576 total ac
2018-08-15	21 growth ac, 323 total ac	2018-08-23	22 growth ac, 598 total ac
2018-08-16	20 growth ac, 343 total ac	2018-08-24	114 growth ac, 712 total ac
2018-08-19	21 growth ac, 364 total ac	2018-08-29	32 growth ac, 744 total ac

### Paola Ridge Fire Progression

Approx 744 acres  
as of 8/29/18  
0021 hrs



Coordinate System: NAD 1983 UTM Zone 12N  
 Datum: North American 1983  
 Prepared by: Admin  
 8/29/2018 2001 hrs

