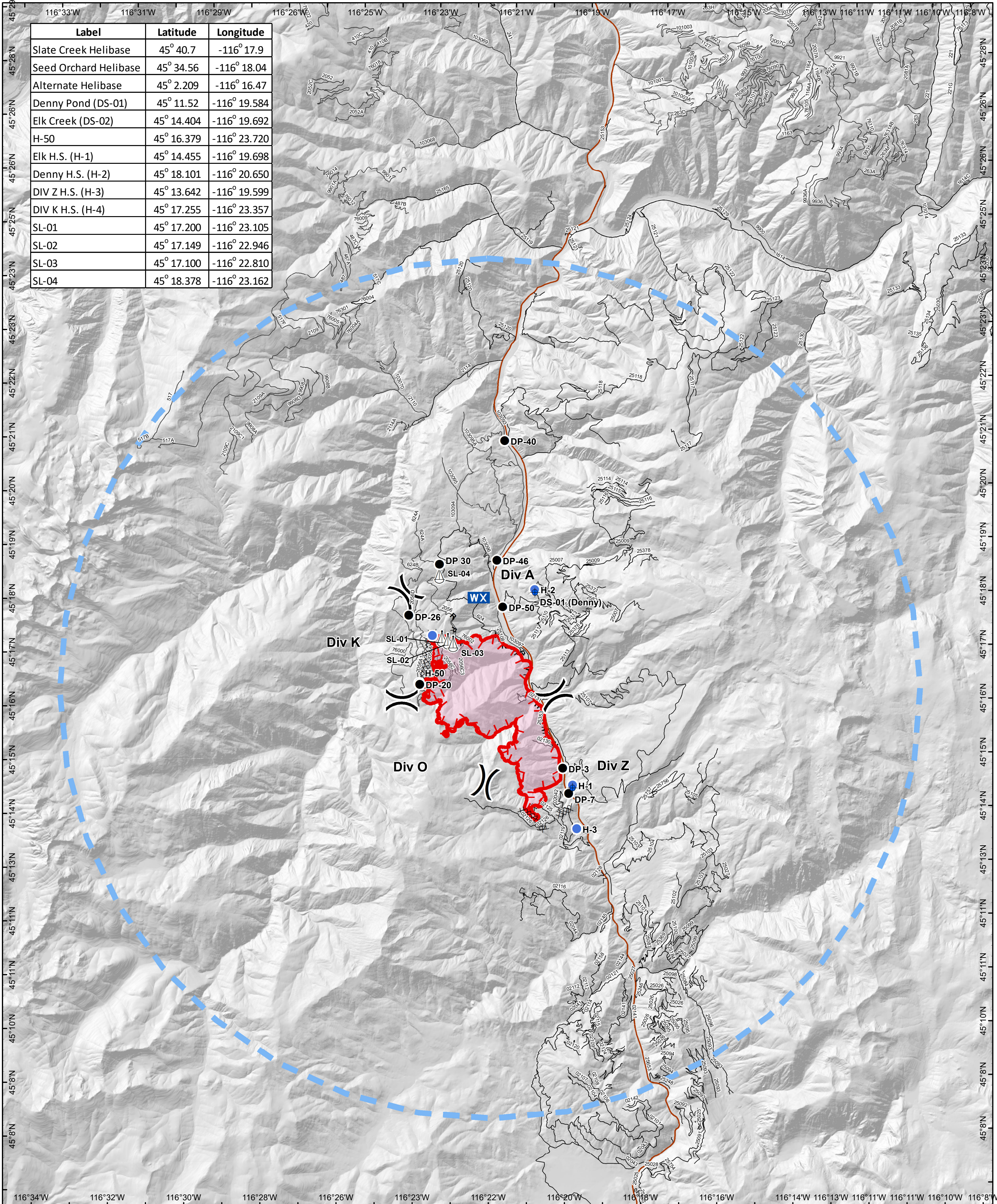


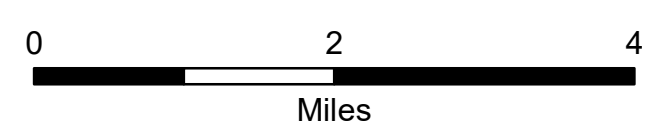
Label	Latitude	Longitude
Slate Creek Helibase	45° 40.7	-116° 17.9
Seed Orchard Helibase	45° 34.56	-116° 18.04
Alternate Helibase	45° 2.209	-116° 16.47
Denny Pond (DS-01)	45° 11.52	-116° 19.584
Elk Creek (DS-02)	45° 14.404	-116° 19.692
H-50	45° 16.379	-116° 23.720
Elk H.S. (H-1)	45° 14.455	-116° 19.698
Denny H.S. (H-2)	45° 18.101	-116° 20.650
DIV Z H.S. (H-3)	45° 13.642	-116° 19.599
DIV K H.S. (H-4)	45° 17.255	-116° 23.357
SL-01	45° 17.200	-116° 23.105
SL-02	45° 17.149	-116° 22.946
SL-03	45° 17.100	-116° 22.810
SL-04	45° 18.378	-116° 23.162



Air Operations
 Rattlesnake Creek
 ID-NCF-000362
 07/28/2018
 3139 acres as of
 2054 hrs 7/26/18



- Dip Site
- Drop Point
- Helispot
- Mobile Weather Unit
- Sling Site
- Uncontrolled Fire Edge (1)
- Temporary Flight Restriction (1)
- R - R Road as Completed Line (1)
- Completed Dozer Line (1)
- H - H Completed Hand Line (1)
- Roads
- Division Break



N
 NAD 83 11N