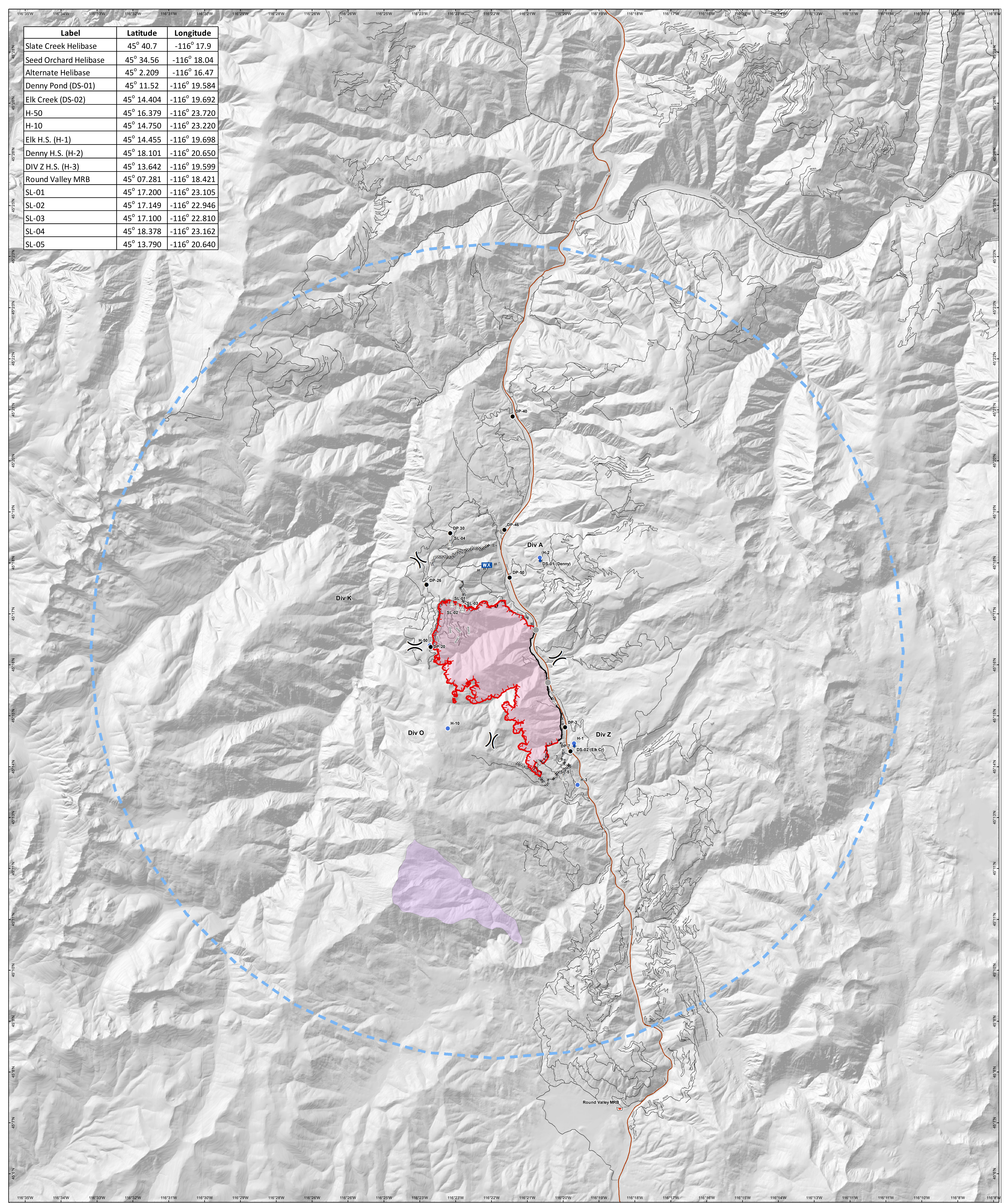


Label	Latitude	Longitude
Slate Creek Helibase	45° 40.7	-116° 17.9
Seed Orchard Helibase	45° 34.56	-116° 18.04
Alternate Helibase	45° 2.209	-116° 16.47
Denny Pond (DS-01)	45° 11.52	-116° 19.584
Elk Creek (DS-02)	45° 14.404	-116° 19.692
H-50	45° 16.379	-116° 23.720
H-10	45° 14.750	-116° 23.220
Elk H.S. (H-1)	45° 14.455	-116° 19.698
Denny H.S. (H-2)	45° 18.101	-116° 20.650
DIV Z H.S. (H-3)	45° 13.642	-116° 19.599
Round Valley MRB	45° 07.281	-116° 18.421
SL-01	45° 17.200	-116° 23.105
SL-02	45° 17.149	-116° 22.946
SL-03	45° 17.100	-116° 22.810
SL-04	45° 18.378	-116° 23.162
SL-05	45° 13.790	-116° 20.640

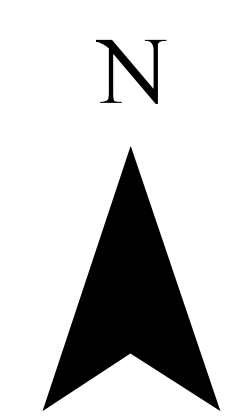
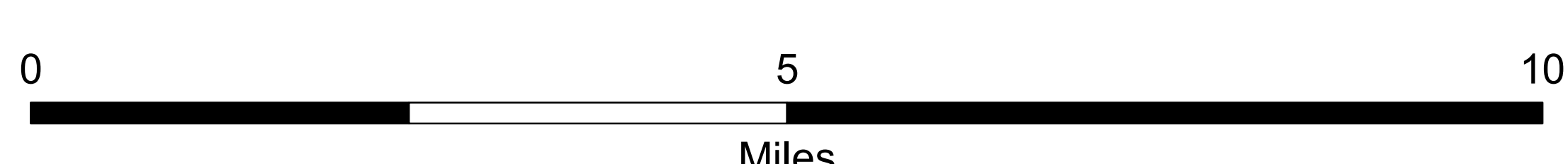


Air Operations
Rattlesnake Creek
ID-NCF-000362
 07/30/2018
 3509 acres as of
 0259 hrs 7/29/18



NAD 83 11N

- Dip Site
- Drop Point
- Helispot
- WX Mobile Weather Unit
- Retardant/Mud Pit
- Sling Site
- Other
- Division Break
- Uncontrolled Fire Edge (1)
- Completed Line (1)
- Completed Dozer Line (1)
- Completed Hand Line (1)
- Road as Completed Line (1)
- Temporary Flight Restriction (1)
- Other (1)
- Wildfire Daily Fire Perimeter
- Value at Risk
- Roads



AIR OPERATIONS