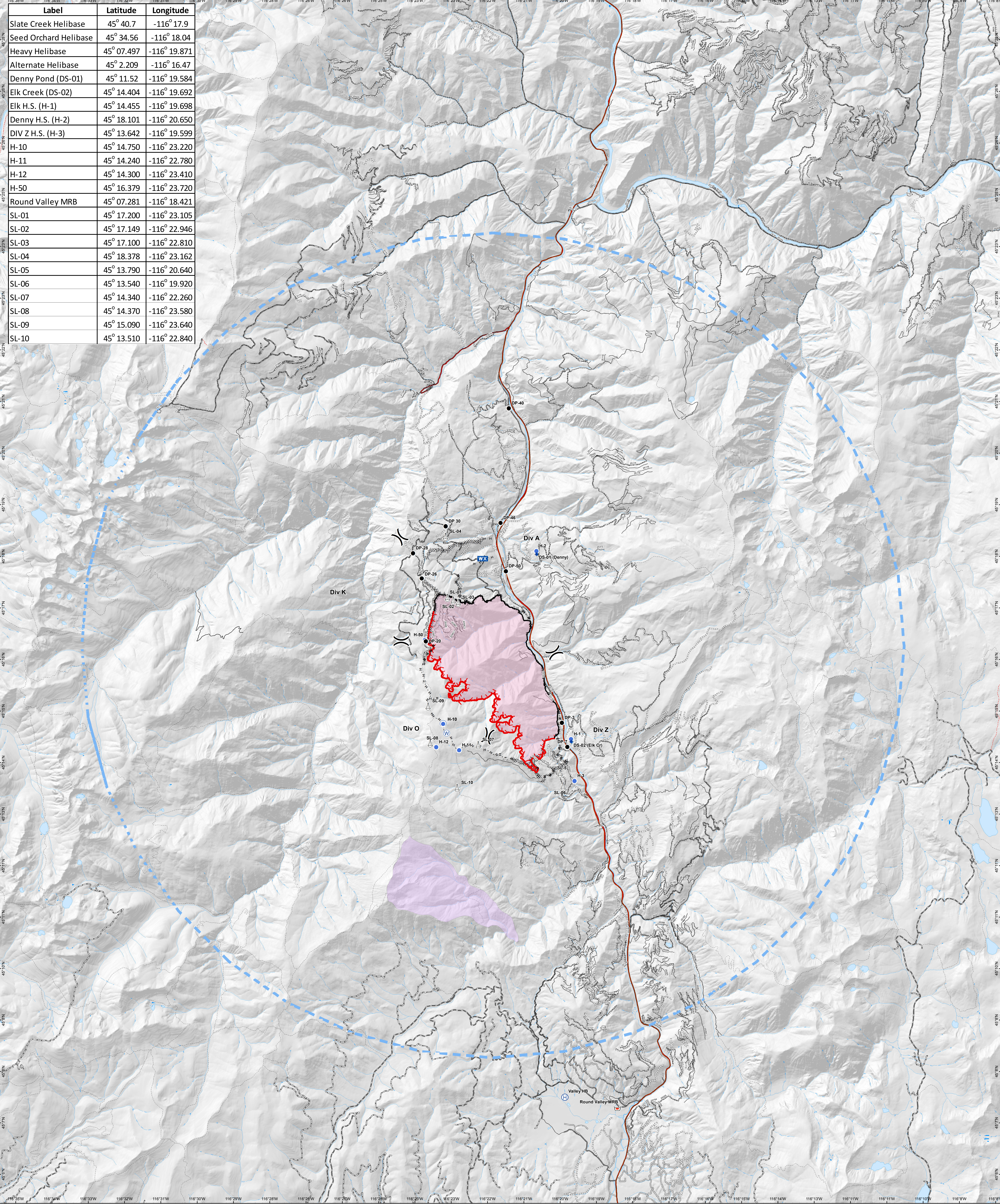


Label	Latitude	Longitude
Slate Creek Helibase	45° 40.7	-116° 17.9
Seed Orchard Helibase	45° 34.56	-116° 18.04
Heavy Helibase	45° 07.497	-116° 19.871
Alternate Helibase	45° 2.209	-116° 16.47
Denny Pond (DS-01)	45° 11.52	-116° 19.584
Elk Creek (DS-02)	45° 14.404	-116° 19.692
Elk H.S. (H-1)	45° 14.455	-116° 19.698
Denny H.S. (H-2)	45° 18.101	-116° 20.650
DIV Z H.S. (H-3)	45° 13.642	-116° 19.599
H-10	45° 14.750	-116° 23.220
H-11	45° 14.240	-116° 22.780
H-12	45° 14.300	-116° 23.410
H-50	45° 16.379	-116° 23.720
Round Valley MRB	45° 07.281	-116° 18.421
SL-01	45° 17.200	-116° 23.105
SL-02	45° 17.149	-116° 22.946
SL-03	45° 17.100	-116° 22.810
SL-04	45° 18.378	-116° 23.162
SL-05	45° 13.790	-116° 20.640
SL-06	45° 13.540	-116° 19.920
SL-07	45° 14.340	-116° 22.260
SL-08	45° 14.370	-116° 23.580
SL-09	45° 15.090	-116° 23.640
SL-10	45° 13.510	-116° 22.840



Air Operations
Rattlesnake Creek
ID-NCF-000362
 08/02/2018
 3851 acres as of
 2024 hrs 7/31/18



NAD 83 11N

◆ Dip Site	☪ Retardant/Mud Pit	— Uncontrolled Fire Edge (1)	— Road as Completed Line (1)	■ Wildfire Daily Fire Perimeter
● Drop Point	△ Sling Site	— Completed Line (1)	~~~~~ Line Break Completed (1)	■ Value at Risk
⊕ Helibase	⊕ Water Source	⊘ Completed Dozer Line (1)	----- Planned Fire Line (1)	— Roads
● Helispot	⌋ Division Break	— Completed Hand Line (1)	— Temporary Flight Restriction (1)	
■ Mobile Weather Unit				

0 5 10
Miles

N