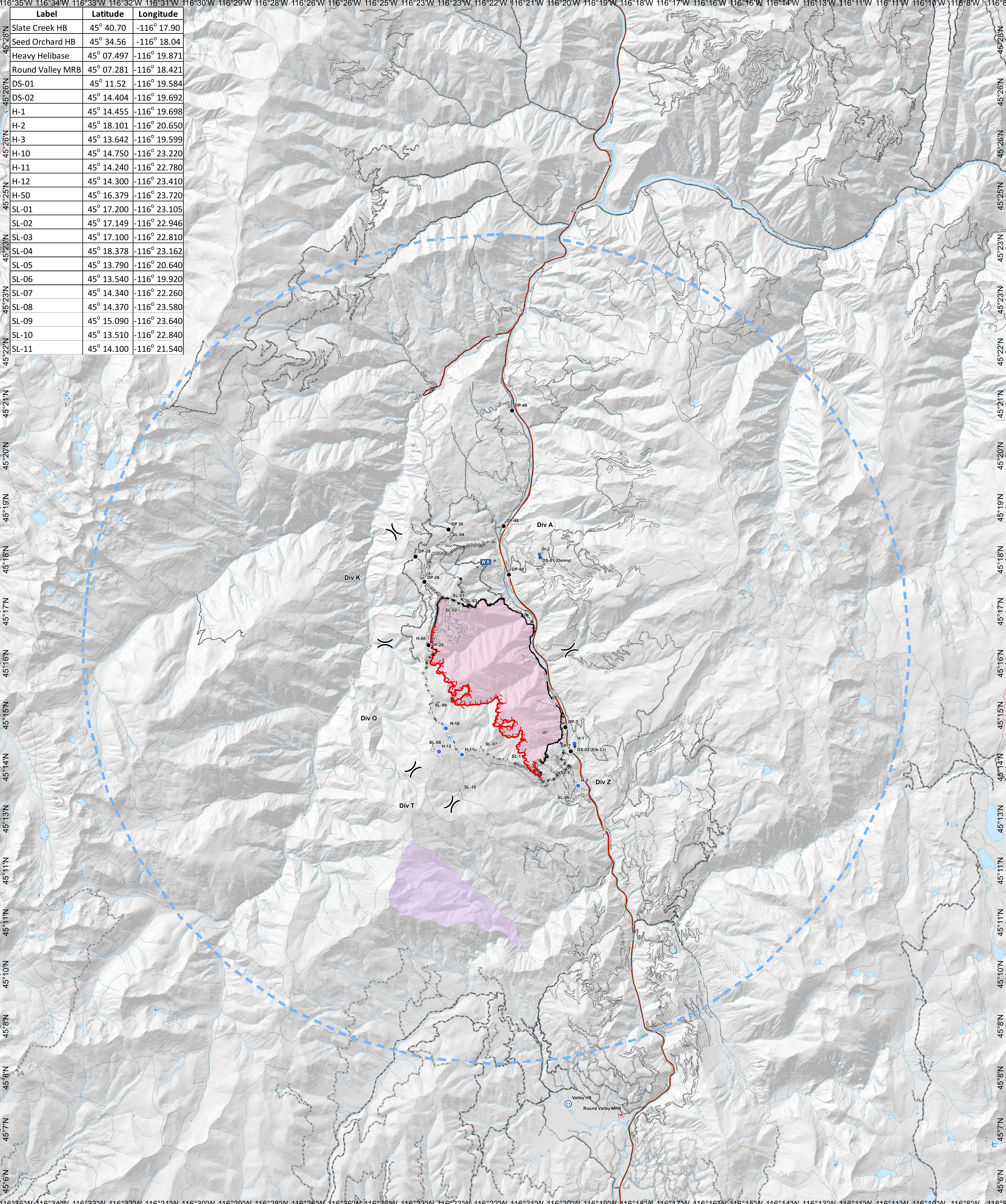


Label	Latitude	Longitude
Slate Creek HB	45° 40.70	-116° 17.90
Seed Orchard HB	45° 34.56	-116° 18.04
Heavy Helibase	45° 07.497	-116° 19.871
Round Valley MRB	45° 07.281	-116° 18.421
DS-01	45° 11.52	-116° 19.584
DS-02	45° 14.404	-116° 19.692
H-1	45° 14.455	-116° 19.698
H-2	45° 18.101	-116° 20.650
H-3	45° 13.642	-116° 19.599
H-10	45° 14.750	-116° 23.220
H-11	45° 14.240	-116° 22.780
H-12	45° 14.300	-116° 23.410
H-50	45° 16.379	-116° 23.720
SL-01	45° 17.200	-116° 23.105
SL-02	45° 17.149	-116° 22.946
SL-03	45° 17.100	-116° 22.810
SL-04	45° 18.378	-116° 23.162
SL-05	45° 13.790	-116° 20.640
SL-06	45° 13.540	-116° 19.920
SL-07	45° 14.340	-116° 22.260
SL-08	45° 14.370	-116° 23.580
SL-09	45° 15.090	-116° 23.640
SL-10	45° 13.510	-116° 22.840
SL-11	45° 14.100	-116° 21.540



Air Operations
Rattlesnake Creek
ID-NCF-000362
 08/03/2018
 3851 acres as of
 2024 hrs 7/31/18



NAD 83 11N

- ◆ Dip Site
- Drop Point
- ⊕ Helibase
- Helispot
- WX Mobile Weather Unit
- 🚒 Retardant/Mud Pit
- ⚙ Sling Site
- 🌊 Water Source
-) Division Break
- 🔴 Uncontrolled Fire Edge (4)
- Completed Line (4)
- ⚡ Completed Dozer Line (13)
- ⋯ Completed Hand Line (20)
- Road as Completed Line (12)
- ~~~~~ Line Break Completed (1)
- ⋯ Planned Fire Line (1)
- ⋯ Temporary Flight Restriction (1)
- 🟡 Wildfire Daily Fire Perimeter
- 🟠 Value at Risk
- Roads

