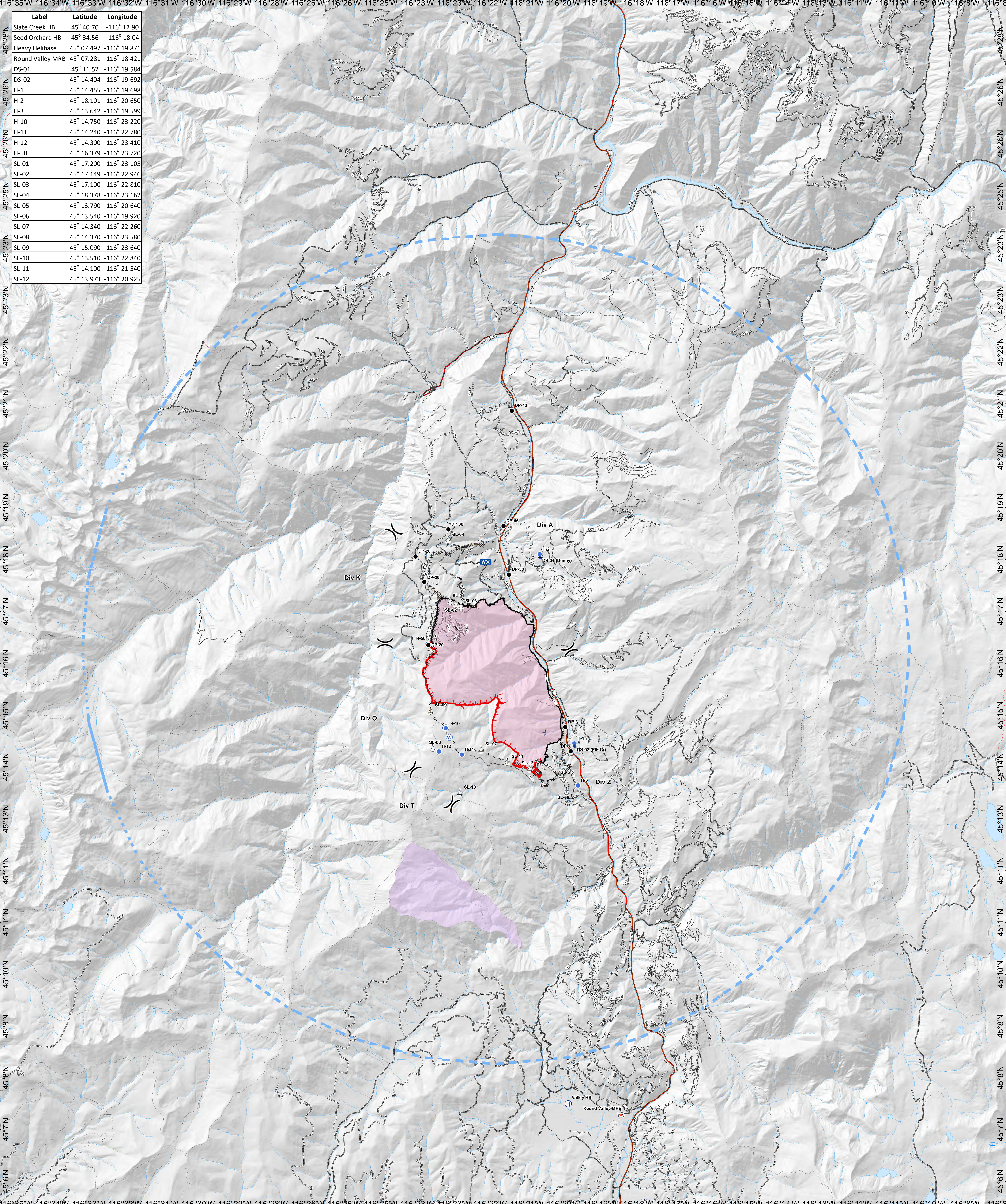


| Label | Latitude | Longitude |
|------------------|------------|--------------|
| Slate Creek HB | 45° 40.70 | -116° 17.90 |
| Seed Orchard HB | 45° 34.56 | -116° 18.04 |
| Heavy Helibase | 45° 07.497 | -116° 19.871 |
| Round Valley MRB | 45° 07.281 | -116° 18.421 |
| DS-01 | 45° 11.52 | -116° 19.584 |
| DS-02 | 45° 14.404 | -116° 19.692 |
| H-1 | 45° 14.455 | -116° 19.698 |
| H-2 | 45° 18.101 | -116° 20.650 |
| H-3 | 45° 13.642 | -116° 19.599 |
| H-10 | 45° 14.750 | -116° 23.220 |
| H-11 | 45° 14.240 | -116° 22.780 |
| H-12 | 45° 14.300 | -116° 23.410 |
| H-50 | 45° 16.379 | -116° 23.720 |
| SL-01 | 45° 17.200 | -116° 23.105 |
| SL-02 | 45° 17.149 | -116° 22.946 |
| SL-03 | 45° 17.100 | -116° 22.810 |
| SL-04 | 45° 18.378 | -116° 23.162 |
| SL-05 | 45° 13.790 | -116° 20.640 |
| SL-06 | 45° 13.540 | -116° 19.920 |
| SL-07 | 45° 14.340 | -116° 22.260 |
| SL-08 | 45° 14.370 | -116° 23.580 |
| SL-09 | 45° 15.090 | -116° 23.640 |
| SL-10 | 45° 13.510 | -116° 22.840 |
| SL-11 | 45° 14.100 | -116° 21.540 |
| SL-12 | 45° 13.973 | -116° 20.925 |



Air Operations
Rattlesnake Creek
ID-NCF-000362
 08/04/2018
 4,318 acres as of
 1730 hrs 8/03/18



NAD 83 11N

- ◆ Dip Site
- Drop Point
- ⊕ Helibase
- Helispot
- WX Mobile Weather Unit
- ⚠ Retardant/Mud Pit
- ⚙ Sling Site
- Ⓜ Water Source
-) (Division Break
- Uncontrolled Fire Edge (2)
- Completed Line (4)
- ⊘ Completed Dozer Line (13)
- - - - - Completed Hand Line (20)
- - - - - Road as Completed Line (12)
- ⚡ Line Break Completed (1)
- - - - - Planned Fire Line (1)
- - - - - Temporary Flight Restriction (1)
- Wildfire Daily Fire Perimeter
- Value at Risk
- Roads

