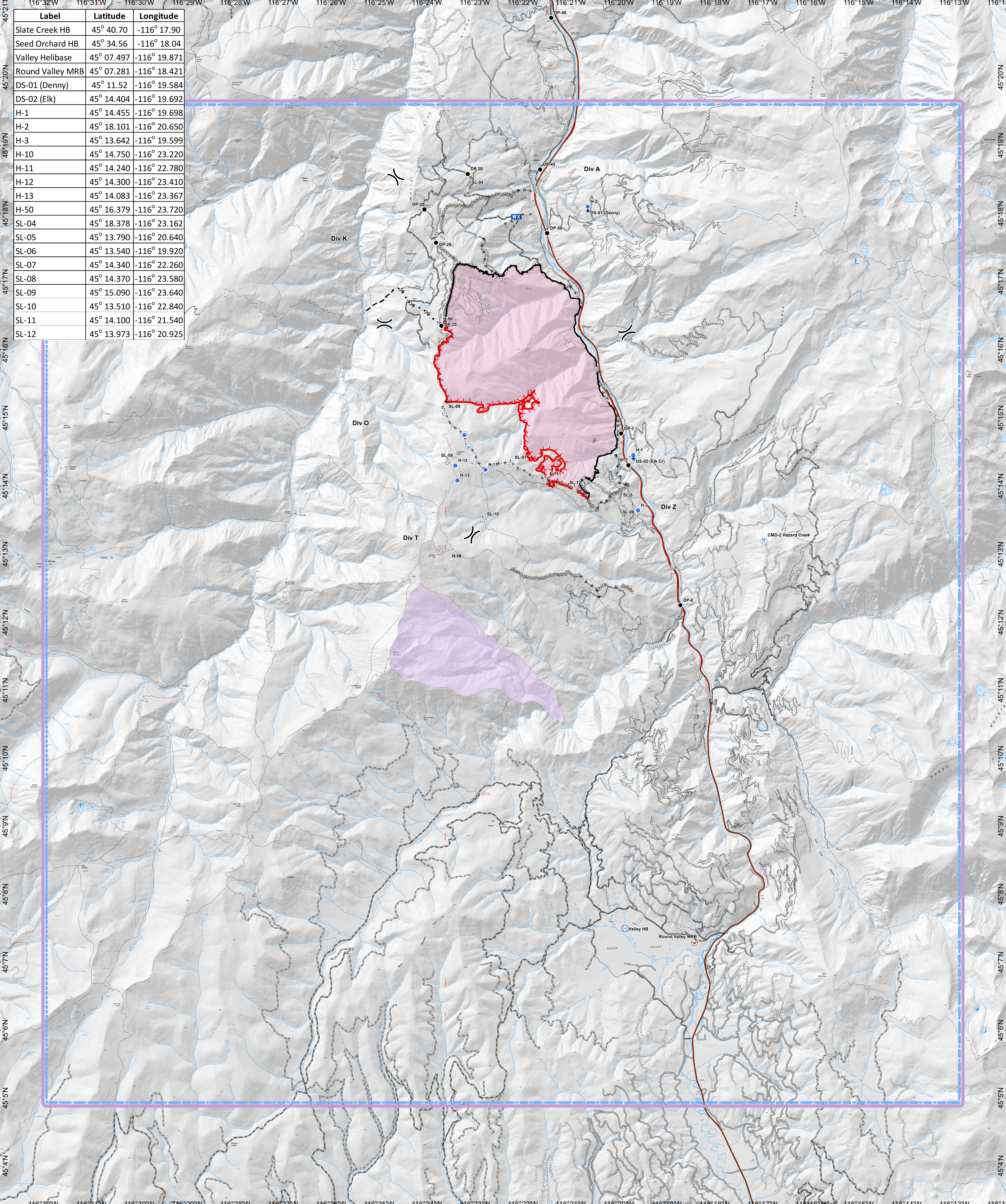


Label	Latitude	Longitude
Slate Creek HB	45° 40.70	-116° 17.90
Seed Orchard HB	45° 34.56	-116° 18.04
Valley Helibase	45° 07.497	-116° 19.871
Round Valley MRB	45° 07.281	-116° 18.421
DS-01 (Denny)	45° 11.52	-116° 19.584
DS-02 (Elk)	45° 14.404	-116° 19.692
H-1	45° 14.455	-116° 19.698
H-2	45° 18.101	-116° 20.650
H-3	45° 13.642	-116° 19.599
H-10	45° 14.750	-116° 23.220
H-11	45° 14.240	-116° 22.780
H-12	45° 14.300	-116° 23.410
H-13	45° 14.083	-116° 23.367
H-50	45° 16.379	-116° 23.720
SL-04	45° 18.378	-116° 23.162
SL-05	45° 13.790	-116° 20.640
SL-06	45° 13.540	-116° 19.920
SL-07	45° 14.340	-116° 22.260
SL-08	45° 14.370	-116° 23.580
SL-09	45° 15.090	-116° 23.640
SL-10	45° 13.510	-116° 22.840
SL-11	45° 14.100	-116° 21.540
SL-12	45° 13.973	-116° 20.925



**Air Operations**  
**Rattlesnake Creek**  
**ID-NCF-000362**  
**08/09/2018**  
**4,418 acres as of**  
**0149 hrs 8/08/18**



NAD 83 11N

- TFR 8\_3784
- ♦ Dip Site
- Drop Point
- ⊕ Helibase
- Helispot
- WX Mobile Weather Unit
- Repeater
- ⌒ Retardant/Mud Pit
- ⚙ Sling Site
- ⊕ Water Source
- ) Division Break
- ▬▬▬▬ Uncontrolled Fire Edge
- ▬▬▬▬ Completed Line
- ▬▬▬▬ Completed Dozer Line
- - - - - Completed Hand Line
- - - - - Road as Completed Line
- ▬▬▬▬ Line Break Completed
- × · × · × · Proposed Dozer Line
- - - - - Planned Fire Line
- ▬▬▬▬ Temporary Flight Restriction
- Wildfire Daily Fire Perimeter
- Value at Risk

