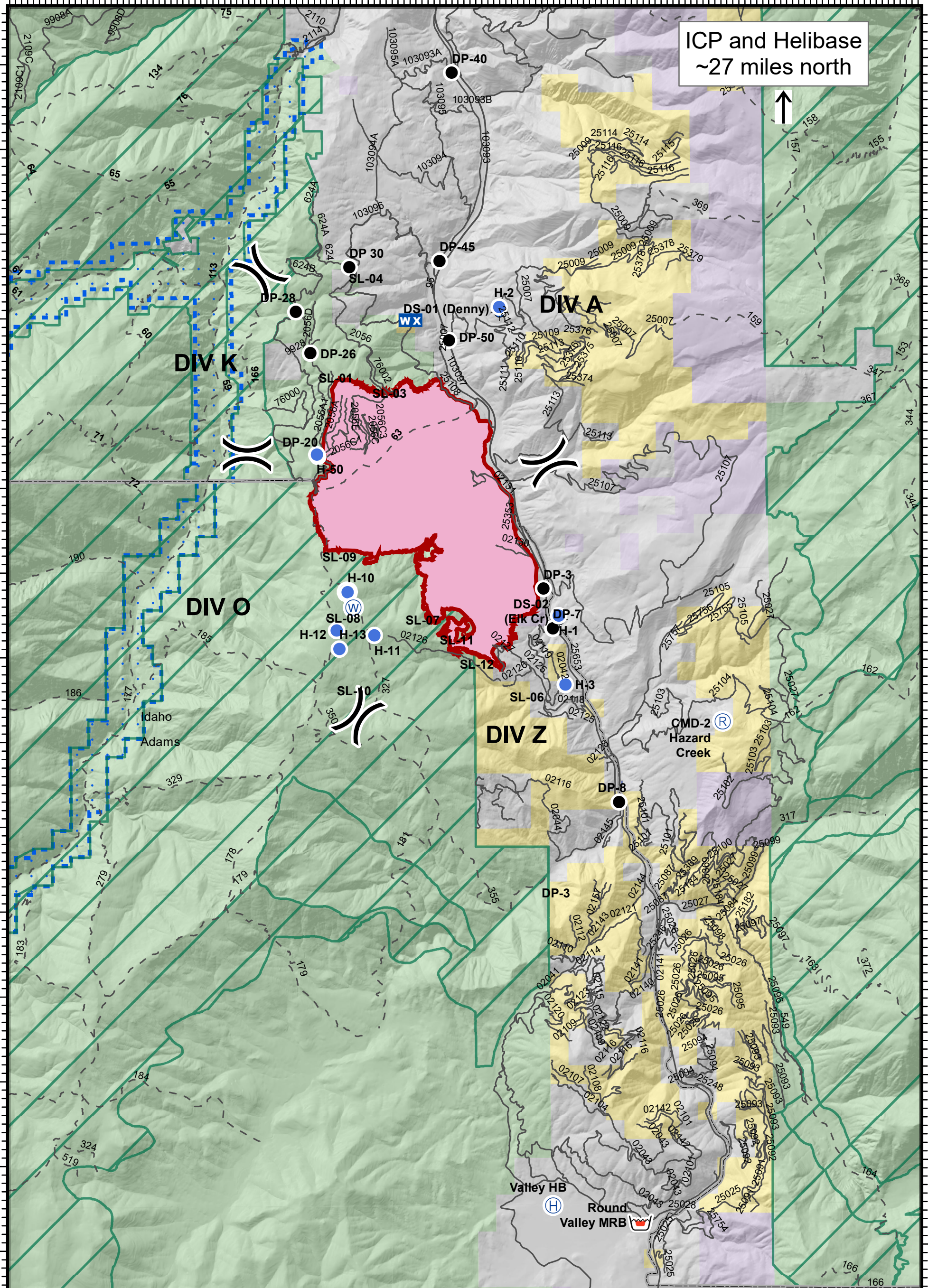


Transportation

08/09/2018

116°28'W 116°27'W 116°26'W 116°25'W 116°24'W 116°23'W 116°22'W 116°21'W 116°20'W 116°19'W 116°18'W 116°17'W 116°16'W 116°15'W 116°14'W



ICP and Helibase
~27 miles north



116°28'W 116°27'W 116°26'W 116°25'W 116°24'W 116°23'W 116°22'W 116°21'W 116°20'W 116°19'W 116°18'W 116°17'W 116°16'W 116°15'W 116°14'W

Rattlesnake Creek

ID-NCF-000362

Fire Perimeter as of
08/08/2018 0149 hrs
4,418 Acres

- Dip Site
- Drop Point
- Helibase
- Helispot
- Mobile Weather Unit
- Repeater
- Retardant/Mud Pit
- Water Source
- Division Break
- Wildfire Daily Fire Perimeter
- Trail
- Roads
- County
- Idaho Roadless Rule
- Wild and Scenic River
- Forest Service
- Private
- State
- State F&G
- BLM



NAD83 Z11

