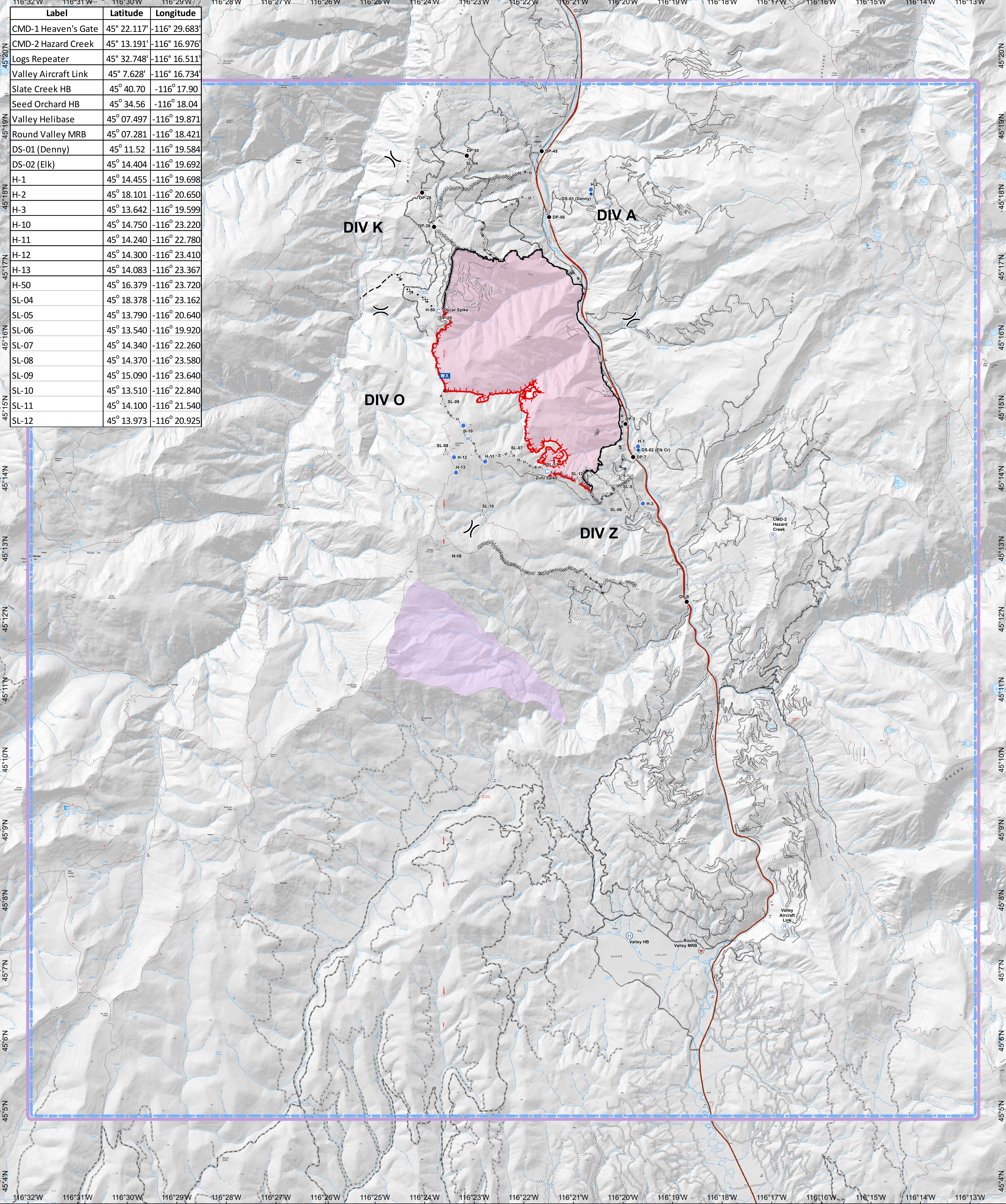


Label	Latitude	Longitude
CMD-1 Heaven's Gate	45° 22.117'	-116° 29.683'
CMD-2 Hazard Creek	45° 13.191'	-116° 16.976'
Logs Repeater	45° 32.748'	-116° 16.511'
Valley Aircraft Link	45° 7.628'	-116° 16.734'
Slate Creek HB	45° 40.70'	-116° 17.90'
Seed Orchard HB	45° 34.56'	-116° 18.04'
Valley Helibase	45° 07.497'	-116° 19.871'
Round Valley MRB	45° 07.281'	-116° 18.421'
DS-01 (Denny)	45° 11.52'	-116° 19.584'
DS-02 (Elk)	45° 14.404'	-116° 19.692'
H-1	45° 14.455'	-116° 19.698'
H-2	45° 18.101'	-116° 20.650'
H-3	45° 13.642'	-116° 19.599'
H-10	45° 14.750'	-116° 23.220'
H-11	45° 14.240'	-116° 22.780'
H-12	45° 14.300'	-116° 23.410'
H-13	45° 14.083'	-116° 23.367'
H-50	45° 16.379'	-116° 23.720'
SL-04	45° 18.378'	-116° 23.162'
SL-05	45° 13.790'	-116° 20.640'
SL-06	45° 13.540'	-116° 19.920'
SL-07	45° 14.340'	-116° 22.260'
SL-08	45° 14.370'	-116° 23.580'
SL-09	45° 15.090'	-116° 23.640'
SL-10	45° 13.510'	-116° 22.840'
SL-11	45° 14.100'	-116° 21.540'
SL-12	45° 13.973'	-116° 20.925'



**Air Operations**  
**Rattlesnake Creek**  
**ID-NCF-000362**  
 08/10/2018  
 4,433 acres as of  
 2037 hrs 8/08/18



Ⓒ Camp	Ⓔ Repeater	— Uncontrolled Fire Edge	~~~~~ Line Break Completed	Ⓜ TFR 8_3784
◆ Dip Site	Ⓕ Retardant/Mud Pit	— Completed Line	× · × · Proposed Dozer Line	Wildfire Daily Fire Perimeter
● Drop Point	Ⓖ Sling Site	⊘ Completed Dozer Line	- - - Planned Fire Line	Value at Risk
Ⓜ Helibase	Ⓜ Water Source	· · · · Completed Hand Line	— Temporary Flight Restriction	
● Helispot	Ⓜ Division Break	· · · · Road as Completed Line		
Ⓜ Mobile Weather Unit				

0 2 4  
Miles