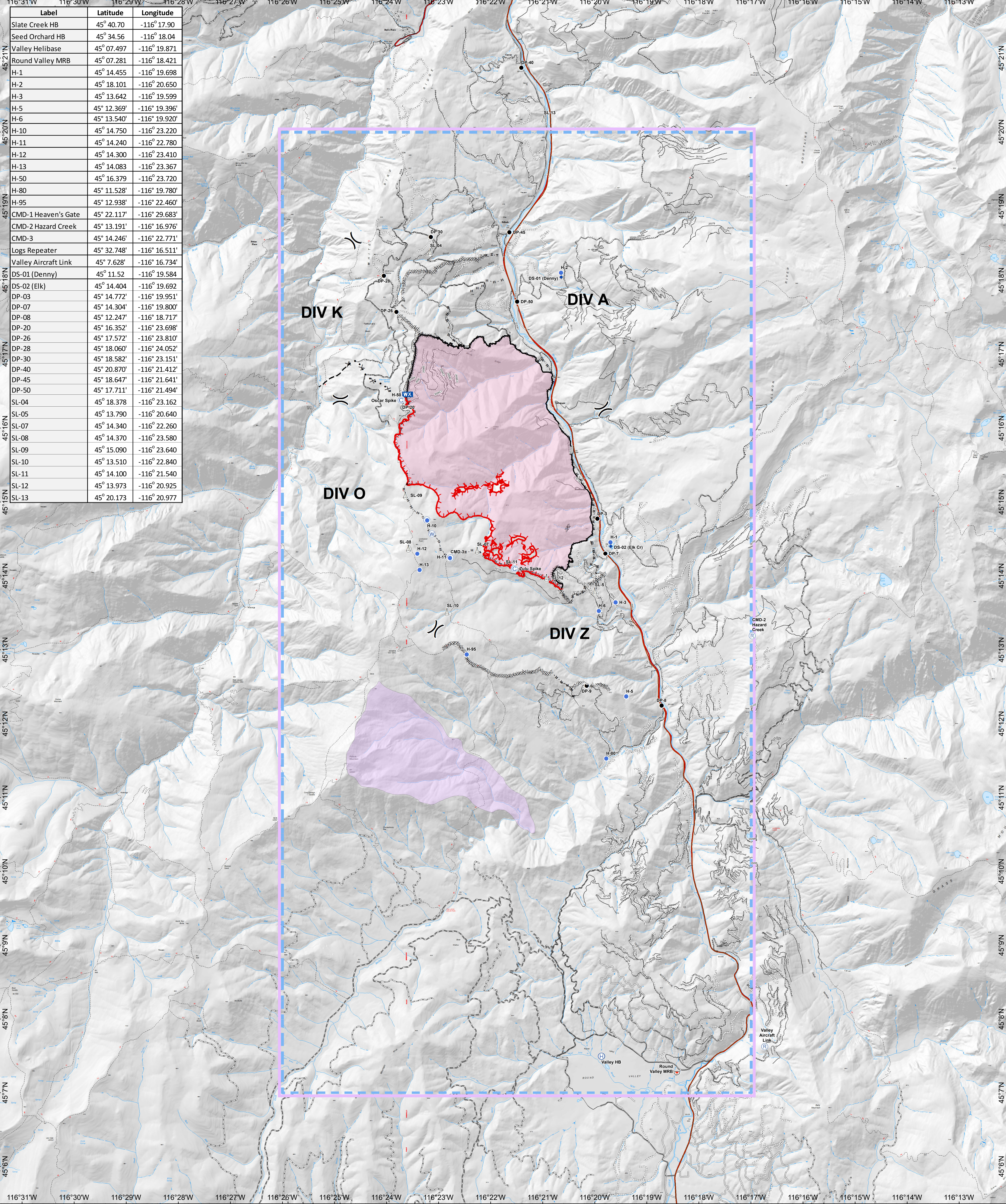


Label	Latitude	Longitude
Slate Creek HB	45° 40.70	-116° 17.90
Seed Orchard HB	45° 34.56	-116° 18.04
Valley Helibase	45° 07.497	-116° 19.871
Round Valley MRB	45° 07.281	-116° 18.421
H-1	45° 14.455	-116° 19.698
H-2	45° 18.101	-116° 20.650
H-3	45° 13.642	-116° 19.599
H-5	45° 12.369	-116° 19.396
H-6	45° 13.540	-116° 19.920
H-10	45° 14.750	-116° 23.220
H-11	45° 14.240	-116° 22.780
H-12	45° 14.300	-116° 23.410
H-13	45° 14.083	-116° 23.367
H-50	45° 16.379	-116° 23.720
H-80	45° 11.528	-116° 19.780
H-95	45° 12.938	-116° 22.460
CMD-1 Heaven's Gate	45° 22.117	-116° 29.683
CMD-2 Hazard Creek	45° 13.191	-116° 16.976
CMD-3	45° 14.246	-116° 22.771
Logs Repeater	45° 32.748	-116° 16.511
Valley Aircraft Link	45° 7.628	-116° 16.734
DS-01 (Denny)	45° 11.52	-116° 19.584
DS-02 (Elk)	45° 14.404	-116° 19.692
DP-03	45° 14.772	-116° 19.951
DP-07	45° 14.304	-116° 19.800
DP-08	45° 12.247	-116° 18.717
DP-20	45° 16.352	-116° 23.698
DP-26	45° 17.572	-116° 23.810
DP-28	45° 18.060	-116° 24.052
DP-30	45° 18.582	-116° 23.151
DP-40	45° 20.870	-116° 21.412
DP-45	45° 18.647	-116° 21.641
DP-50	45° 17.711	-116° 21.494
SL-04	45° 18.378	-116° 23.162
SL-05	45° 13.790	-116° 20.640
SL-07	45° 14.340	-116° 22.260
SL-08	45° 14.370	-116° 23.580
SL-09	45° 15.090	-116° 23.640
SL-10	45° 13.510	-116° 22.840
SL-11	45° 14.100	-116° 21.540
SL-12	45° 13.973	-116° 20.925
SL-13	45° 20.173	-116° 20.977



**Air Operations**  
**Rattlesnake Creek**  
**ID-NCF-000362**

08/13/2018  
 4,731 acres as of  
 1030 hrs 08/12/18



NAD 83 11N

- Ⓒ Camp
- ◆ Dip Site
- Drop Point
- Ⓔ Helibase
- Helispot
- Ⓜ Mobile Weather Unit
- Ⓔ Repeater
- Ⓜ Retardant/Mud Pit
- Ⓐ Sling Site
- Ⓜ Water Source
- Ⓜ Division Break
- Uncontrolled Fire Edge
- Completed Line
- Completed Dozer Line
- Completed Hand Line
- Road as Completed Line
- ~~~~~ Line Break Completed
- × · × · Proposed Dozer Line
- Planned Fire Line
- Temporary Flight Restriction
- Wildfire Daily Fire Perimeter
- Value at Risk

N

0 2 4  
Miles