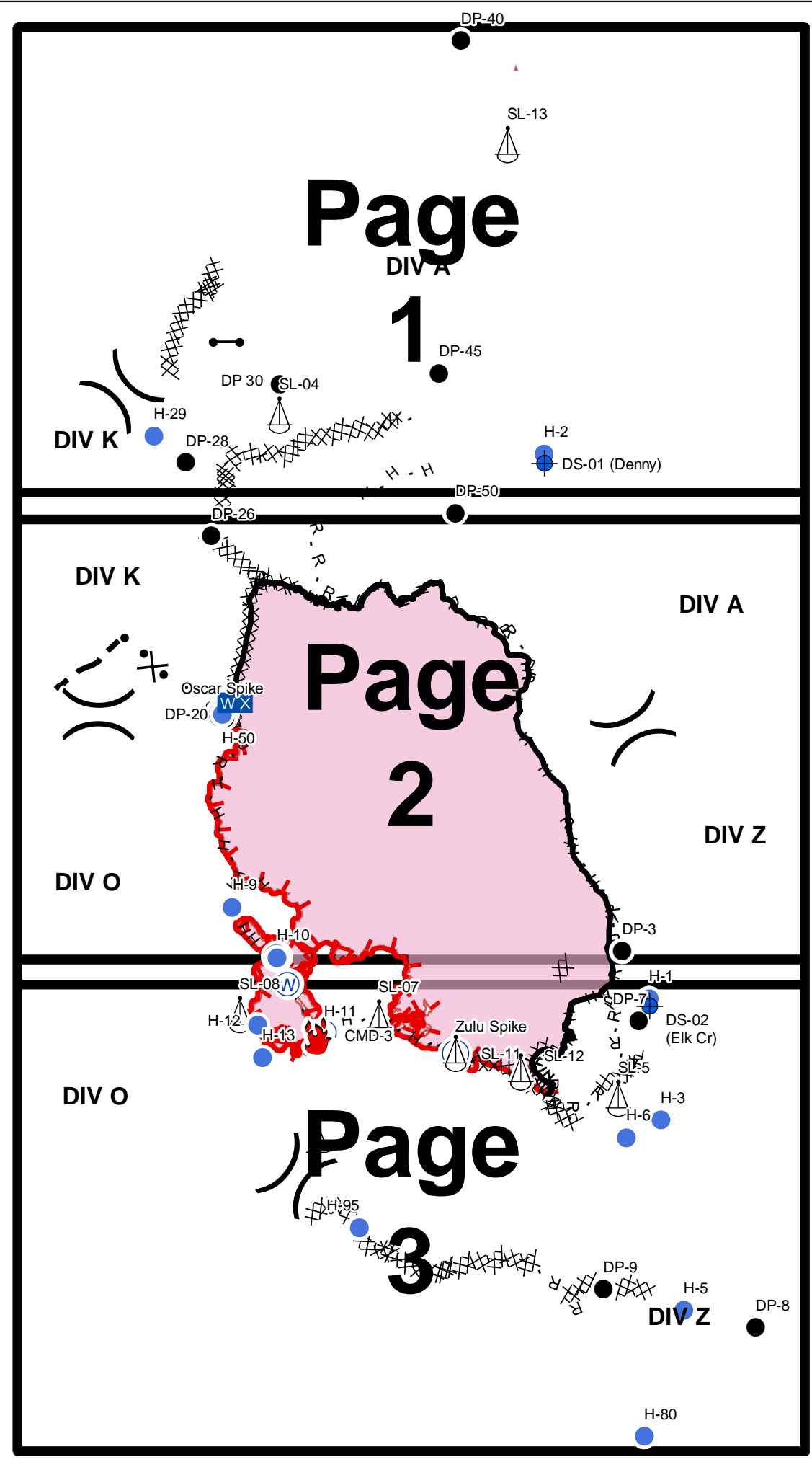


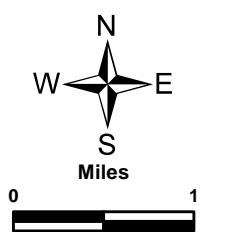
Southwest Area

Incident Management Team 3

- Camp
- Dip Site
- Drop Point
- Fire Location
- Gate
- Helispot
- Mobile Weather Unit
- Repeater
- Sling Site
- Water Source
- Division Break
- Uncontrolled Fire Edge
- Completed Line
- Completed Dozer Line
- Completed Hand Line
- Road as Completed Line
- Line Break Completed
- Proposed Dozer Line
- Planned Fire Line
- Wildfire Daily Fire Perimeter



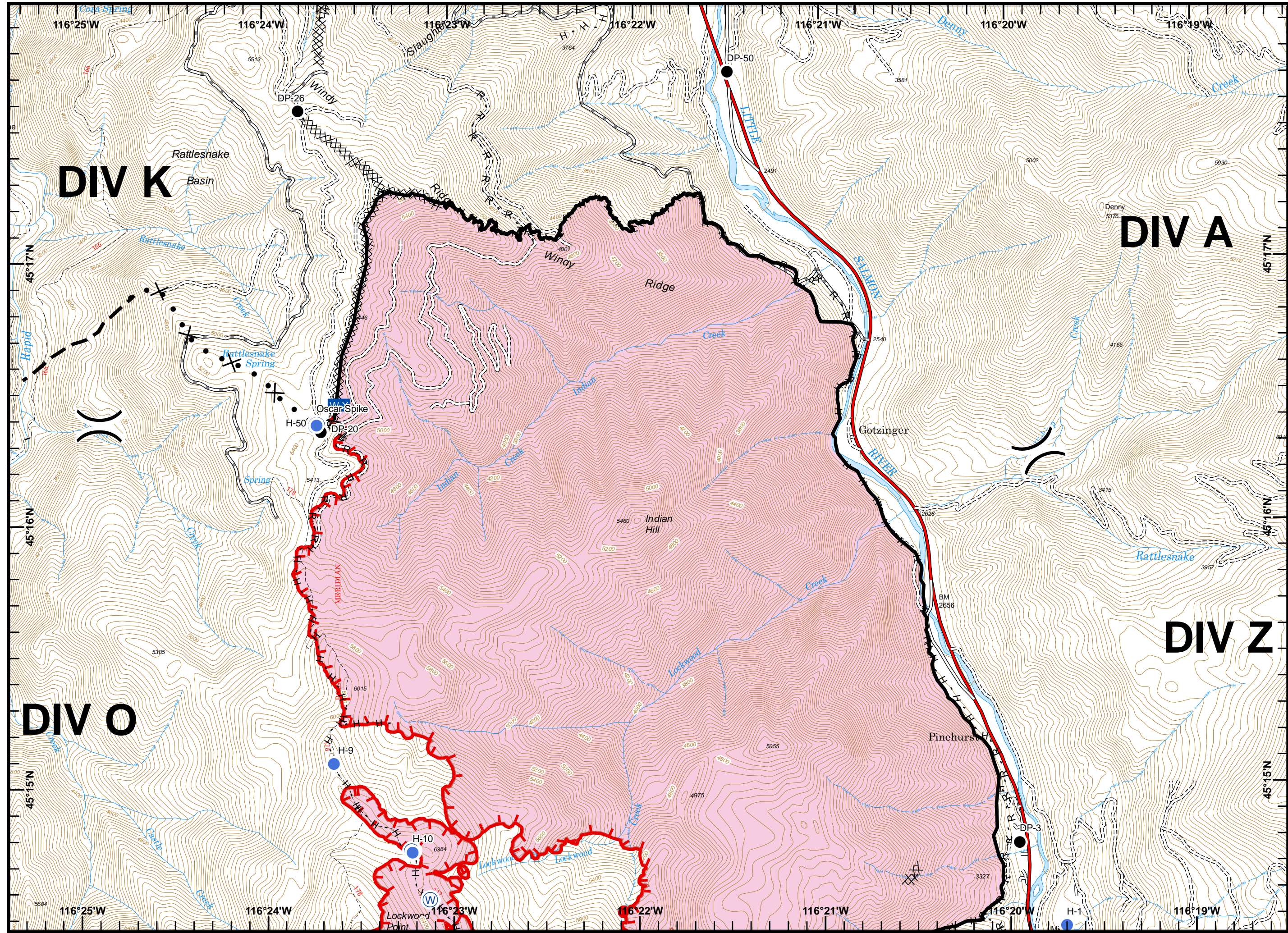
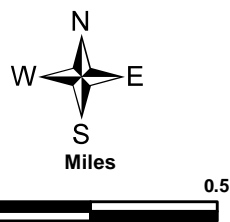
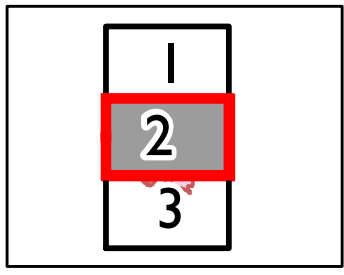
CMD-2
 Hazard
 Creek





- Camp
- Dip Site
- Drop Point
- Helispot
- Mobile Weather Unit
- Water Source
- Division Break

- Uncontrolled Fire Edge
- Completed Line
- Completed Dozer Line
- Completed Hand Line
- Road as Completed Line
- Proposed Dozer Line
- Planned Fire Line
- Wildfire Daily Fire Perimeter





- Camp
- Dip Site
- Drop Point
- Fire Location
- Hellspace
- Repeater
- Sling Site
- Water Source
- Division Break

- Uncontrolled Fire Edge
- Completed Line
- Completed Dozer Line
- Completed Hand Line
- Road as Completed Line
- Line Break Completed
- Planned Fire Line
- Wildfire Daily Fire Perimeter

