

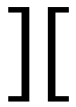


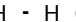
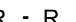





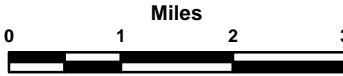


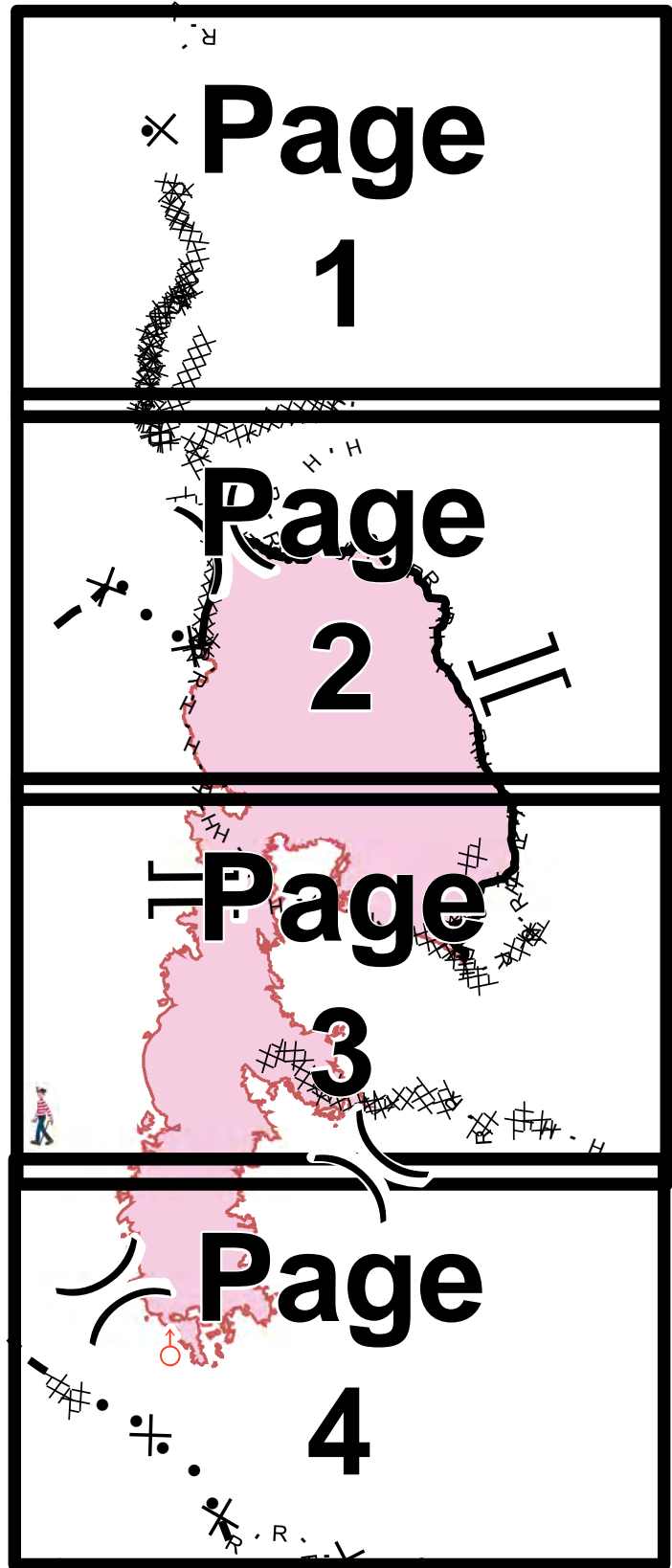
NAD 1983 UTM Zone 11N



-  Spot Fire
-  Division Break
-  Branch Break
-  Completed Line
-  Completed Dozer Line
-  Completed Hand Line
-  Road as Completed Line
-  Line Break Completed
-  Proposed Dozer Line
-  Planned Fire Line
-  Planned Secondary Line
-  Wildfire Daily Fire Perimeter



# Branch I



Div C

Div E

Div Z

Div O

# Branch II

Div W

**NAD 1983 UTM Zone 11N**



- ( )** Division
- [ ]** Branch
- Drop Point
- Gate
- Helispot
- ▲** Sling Site
- XXXXX** Completed Dozer Line
- H - H** Completed Hand Line
- R - R** Road as Completed Line
- ⊗ ●** Proposed Dozer Line
- Planned Fire Line
- Wildfire Daily Fire Perimeter

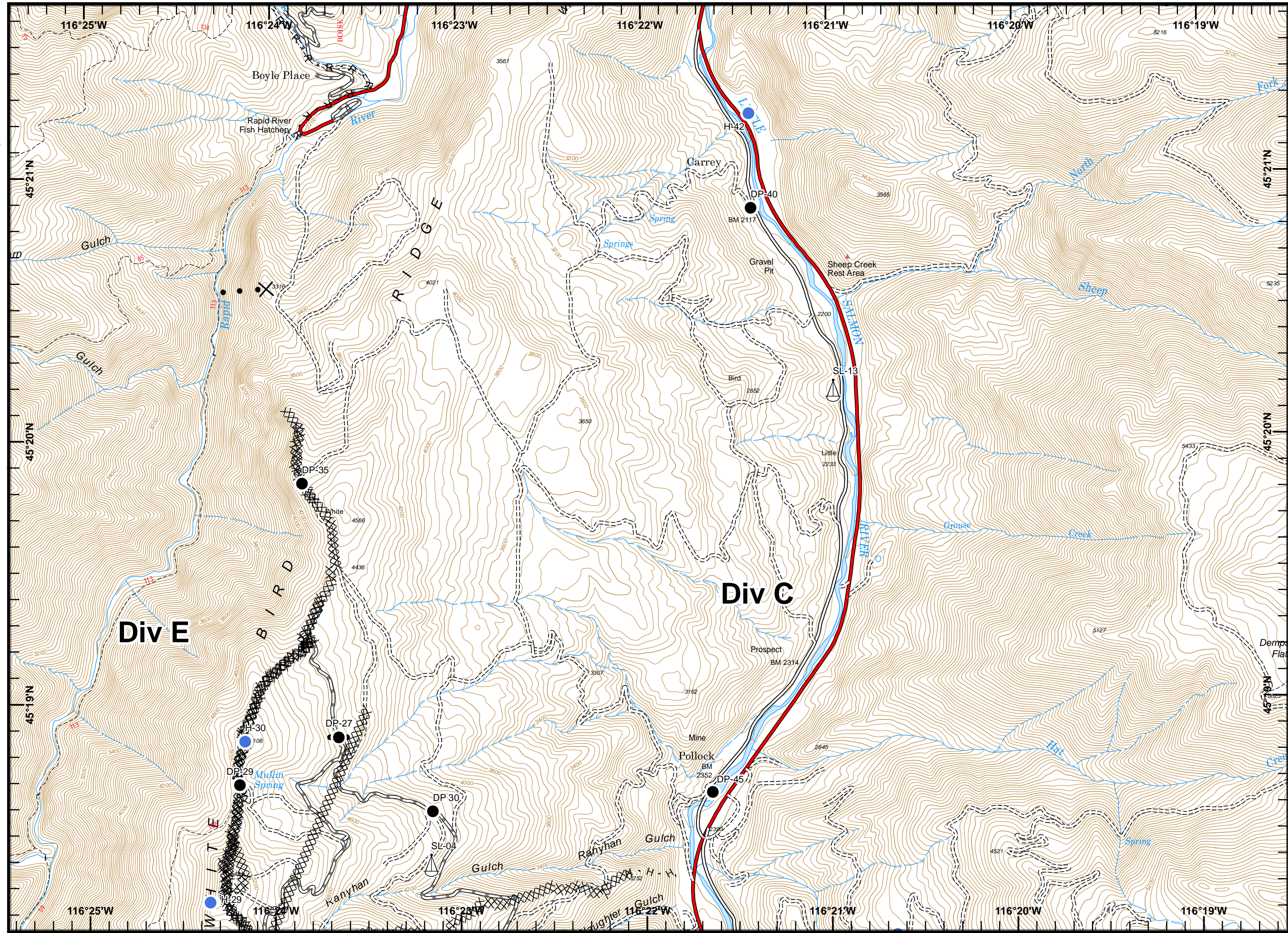
1

2

3

4

Miles

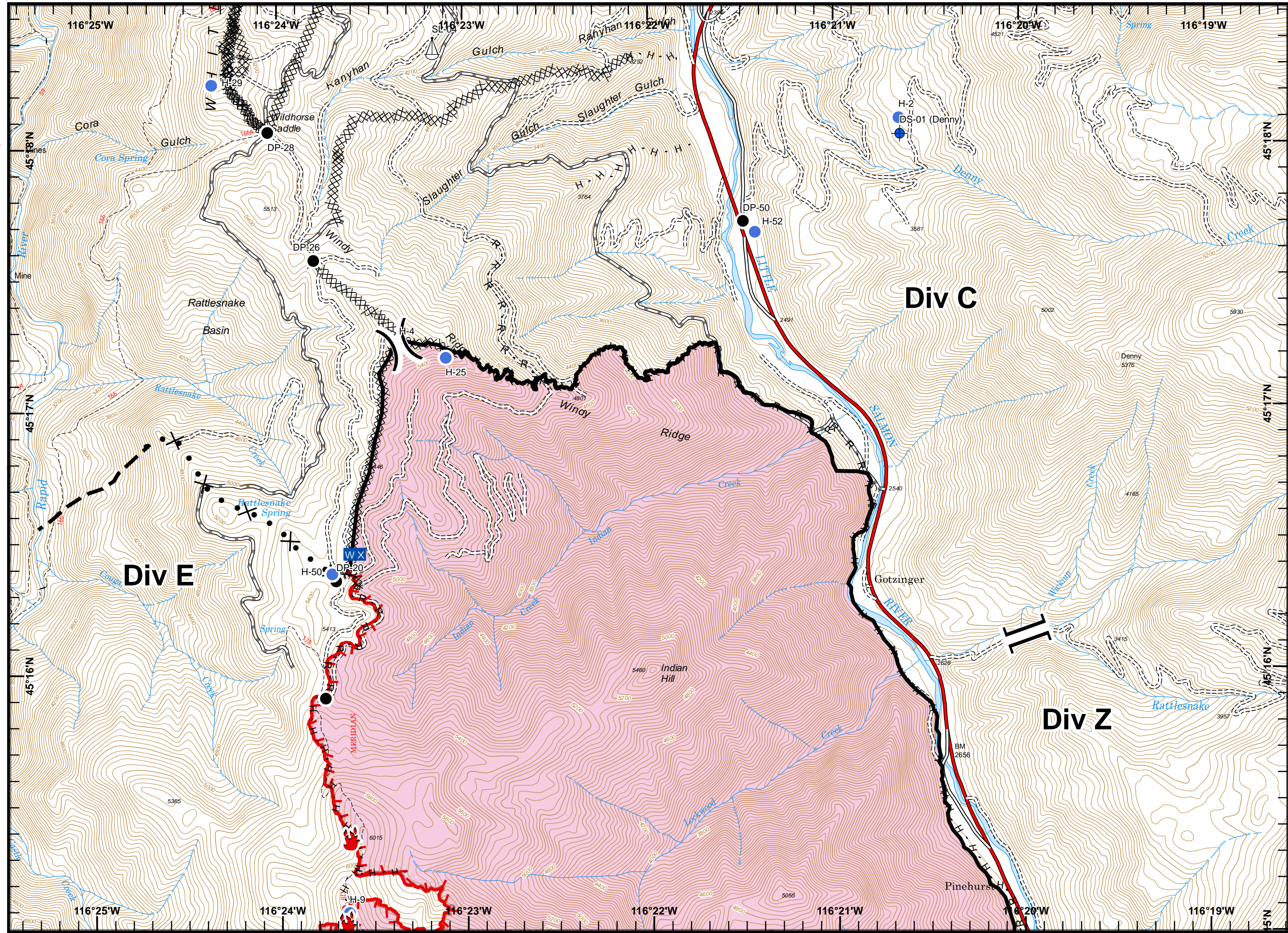


**NAD 1983 UTM Zone 11N**



- ( )** Division
- [ ]** Branch
- Dip Site
- Drop Point
- Fire Location
- Helispot
- Mobile Weather Unit
- Sling Site
- Uncontrolled Fire Edge
- Completed Line
- Completed Dozer Line
- H - H** Completed Hand Line
- R - R** Road as Completed Line
- Proposed Dozer Line
- Planned Fire Line
- Wildfire Daily Fire Perimeter

0 Miles 0.5

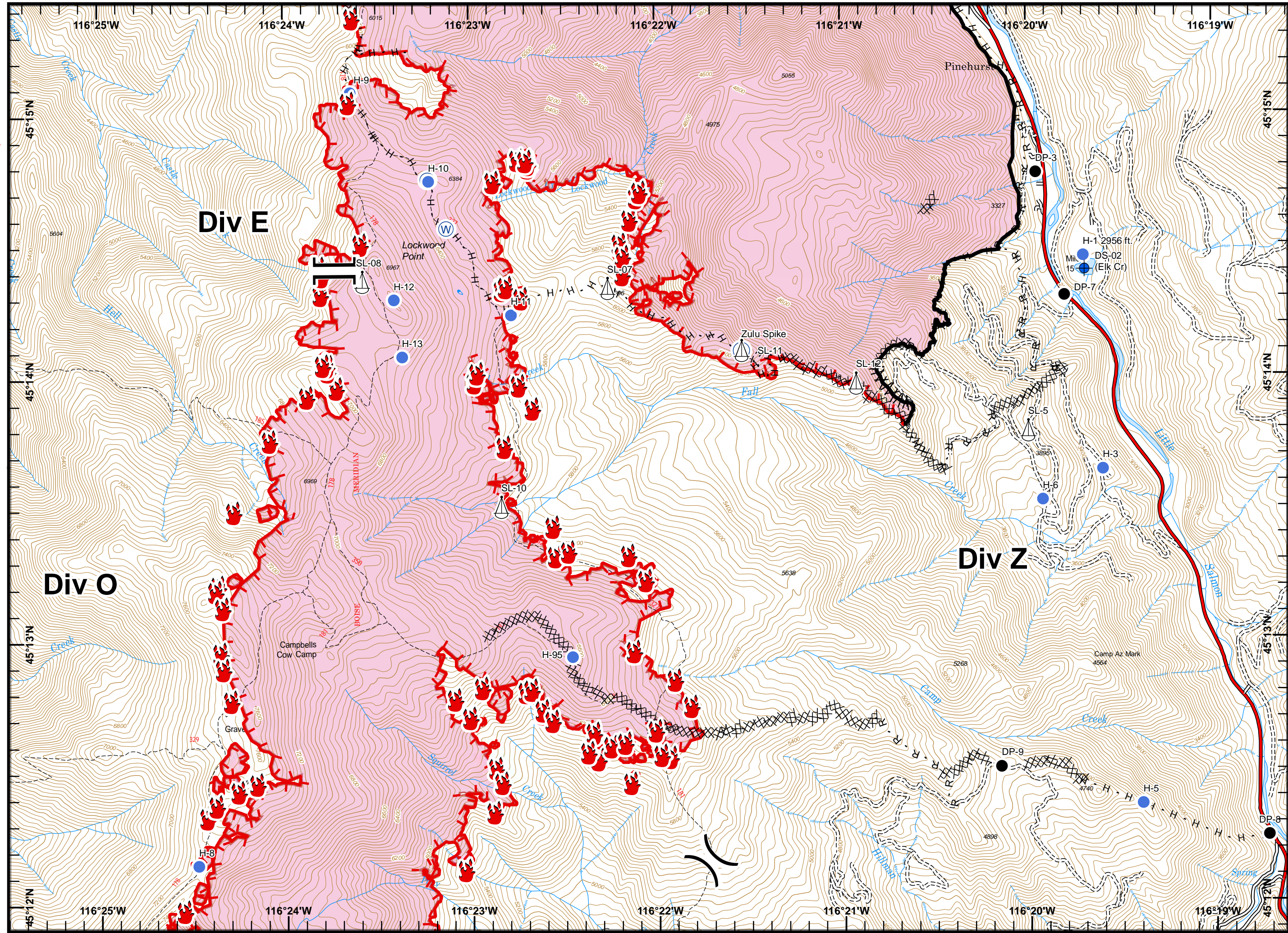


NAD 1983 UTM Zone 11N



) ( Division  
 ][ Branch

- Camp
- Dip Site
- Drop Point
- Fire Location
- Helispot
- Sling Site
- Water Source
- Uncontrolled Fire Edge
- Completed Line
- Completed Dozer Line
- H - H Completed Hand Line
- R - R Road as Completed Line
- Line Break Completed
- Planned Fire Line
- Wildfire Daily Fire Perimeter



NAD 1983 UTM Zone 11N



- ( ) Division
- [ ] Branch
- Drop Point
- 🔥 Fire Location
- Helispot
- WX Mobile Weather Unit
- R Repeater
- ♂ Spot Fire
- W Water Source
- ⚠ Value at Risk
- ┌ Uncontrolled Fire Edge
- XXXX Completed Dozer Line
- H - H Completed Hand Line
- R - R Road as Completed Line
- ⊗ ● Proposed Dozer Line
- ▬ Planned Fire Line
- ▭ Wildfire Daily Fire Perimeter

0 Miles 0.5

