

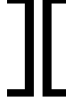
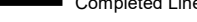

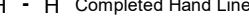
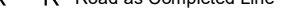

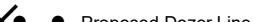
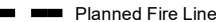
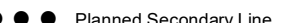






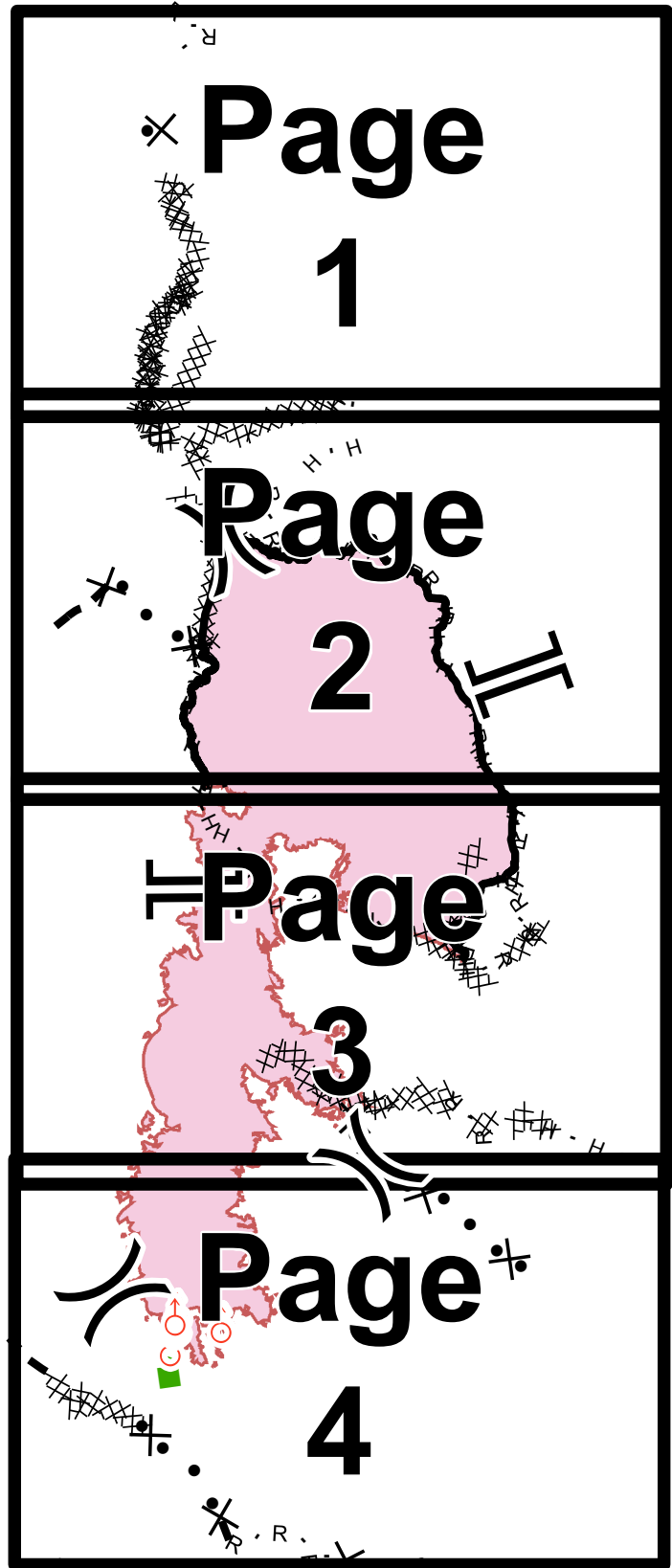
NAD 1983 UTM Zone 11N



-  Spot Fire
-  Division Break
-  Branch Break
-  Completed Line
-  Completed Dozer Line
-  Completed Hand Line
-  Road as Completed Line
-  Line Break Completed
-  Proposed Dozer Line
-  Planned Fire Line
-  Planned Secondary Line
-  Escape Route
-  Wildfire Daily Fire Perimeter



Branch I



Div C

Div E

Div Z

Div O

Branch II

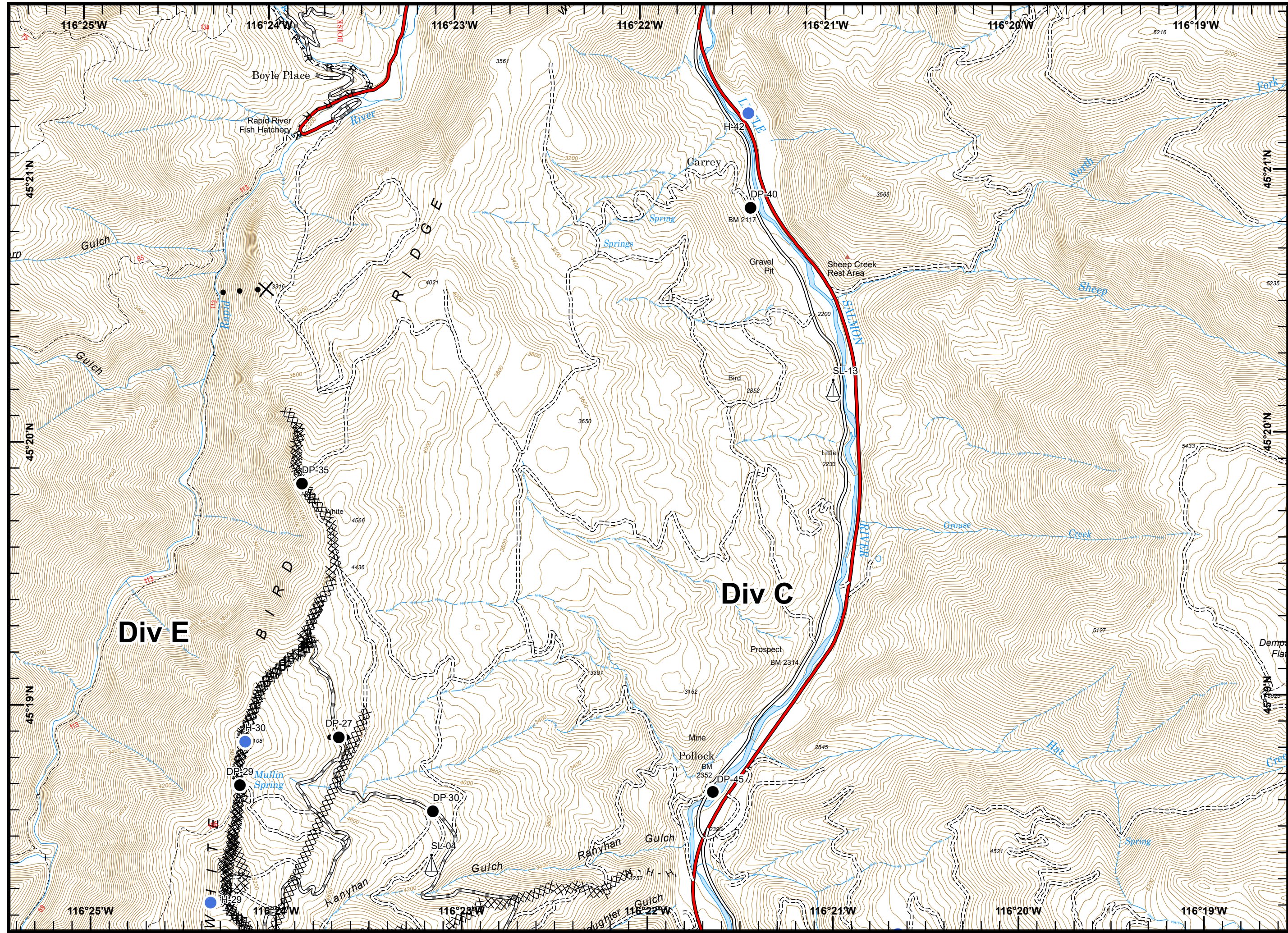
Div W

NAD 1983 UTM Zone 11N



- () Division
- [] Branch
- Drop Point
- Gate
- Helispot
- ▲ Sling Site
- XXXXX Completed Dozer Line
- H - H Completed Hand Line
- R - R Road as Completed Line
- ⊗ ● Proposed Dozer Line
- Planned Fire Line
- █ Wildfire Daily Fire Perimeter

0 Miles 0.5

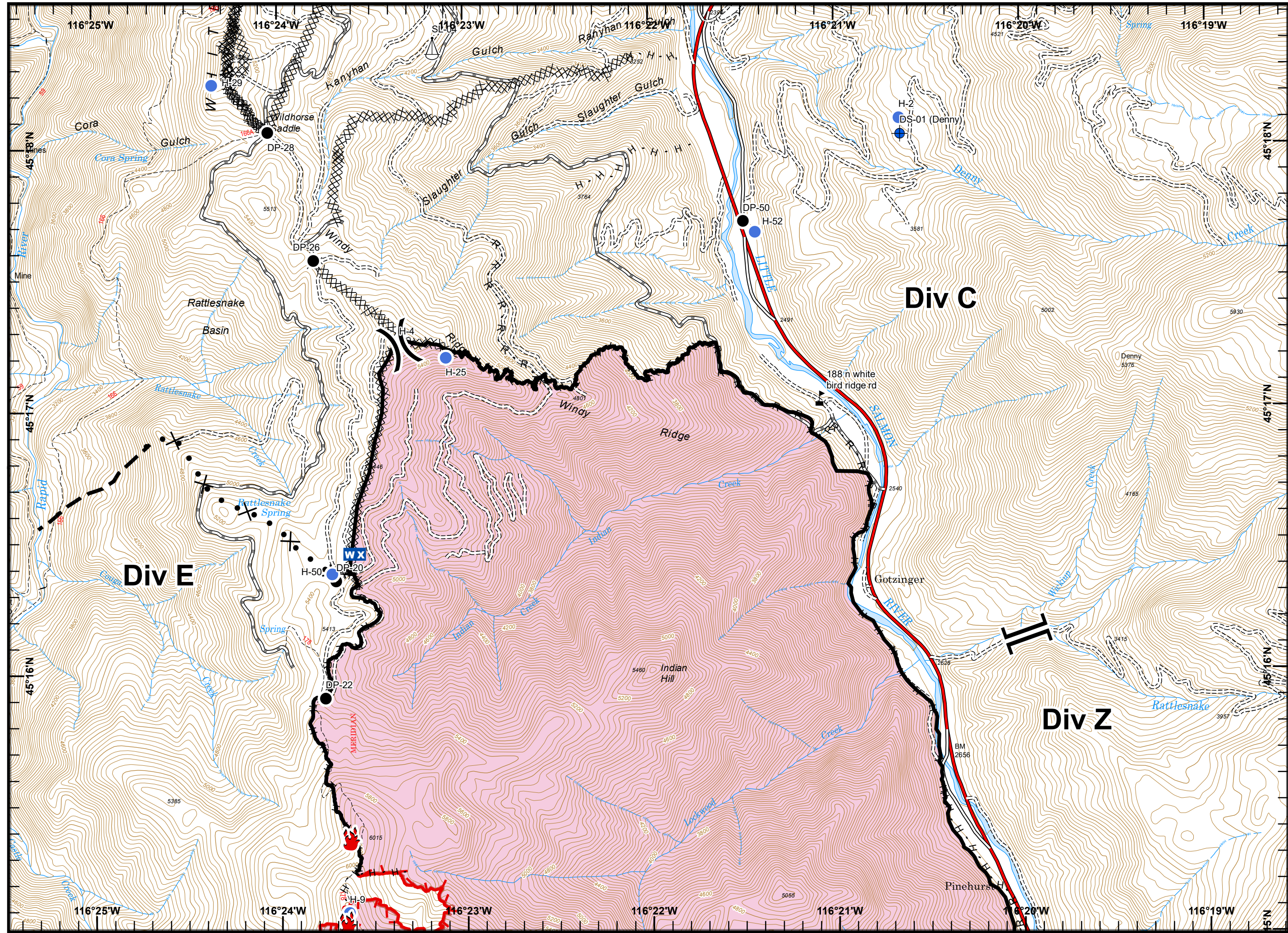


NAD 1983 UTM Zone 11N



- () Division
- [] Branch
- Dip Site
- Drop Point
- Fire Location
- Helispot
- Mobile Weather Unit
- Sling Site
- Value at Risk
- Uncontrolled Fire Edge
- Completed Line
- Completed Dozer Line
- H - H Completed Hand Line
- R - R Road as Completed Line
- Proposed Dozer Line
- Planned Fire Line
- Wildfire Daily Fire Perimeter

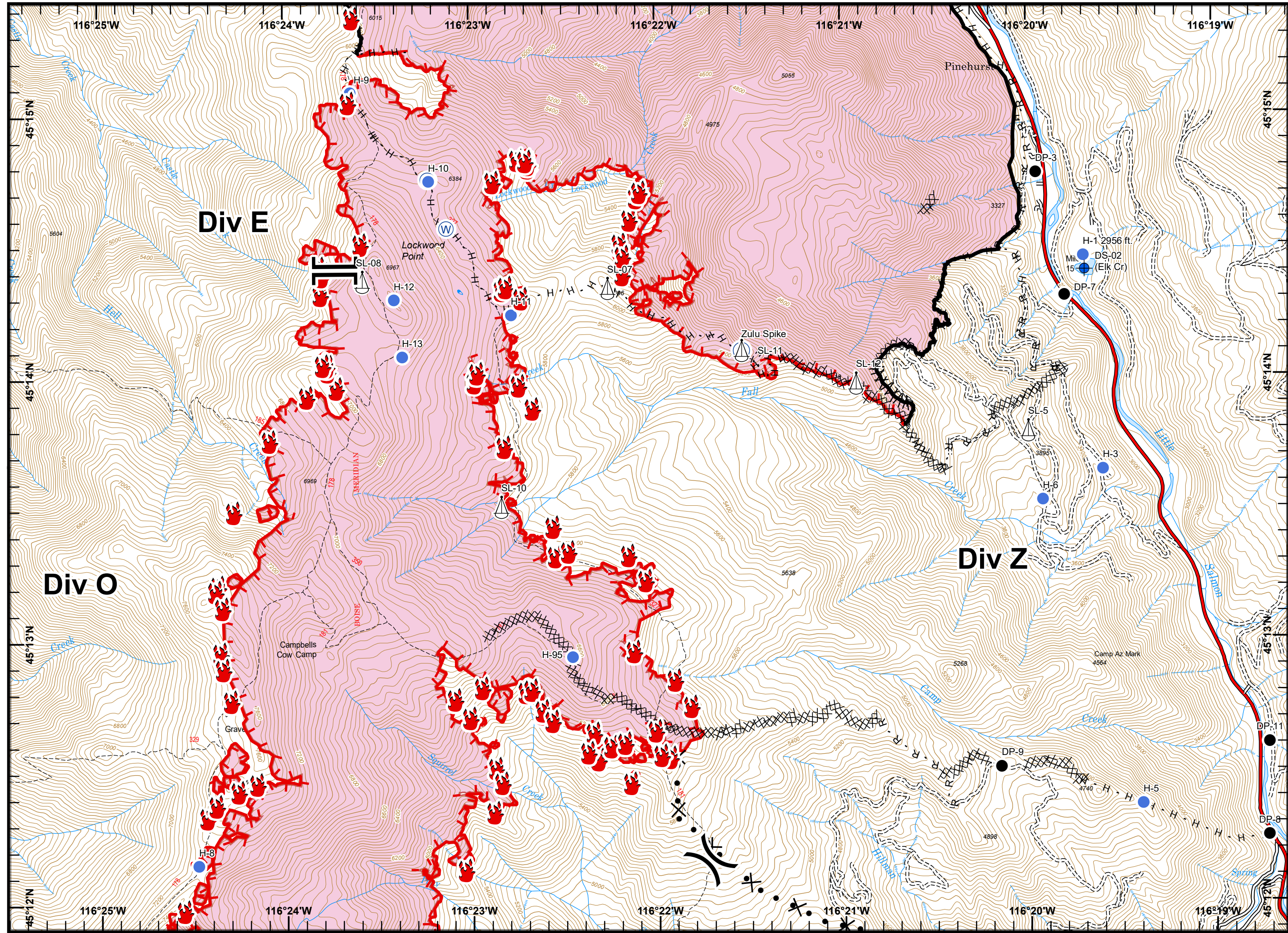
0 0.5 Miles



NAD 1983 UTM Zone 11N



- () Division
- [] Branch
- Camp
- Dip Site
- Drop Point
- Fire Location
- Helispot
- Sling Site
- Water Source
- Uncontrolled Fire Edge
- Completed Line
- Completed Dozer Line
- H - H Completed Hand Line
- R - R Road as Completed Line
- Line Break Completed
- Proposed Dozer Line
- Planned Fire Line
- Wildfire Daily Fire Perimeter



NAD 1983 UTM Zone 11N



- ()** Division
- []** Branch
- Drop Point
- Fire Location
- Helispot
- Mobile Weather Unit
- Repeater
- Spot Fire
- Water Source
- Value at Risk
- Uncontrolled Fire Edge
- Completed Dozer Line
- H - H Completed Hand Line
- R - R Road as Completed Line
- Proposed Dozer Line
- Planned Fire Line
- Escape Route
- Wildfire Daily Fire Perimeter

0 Miles 0.5

