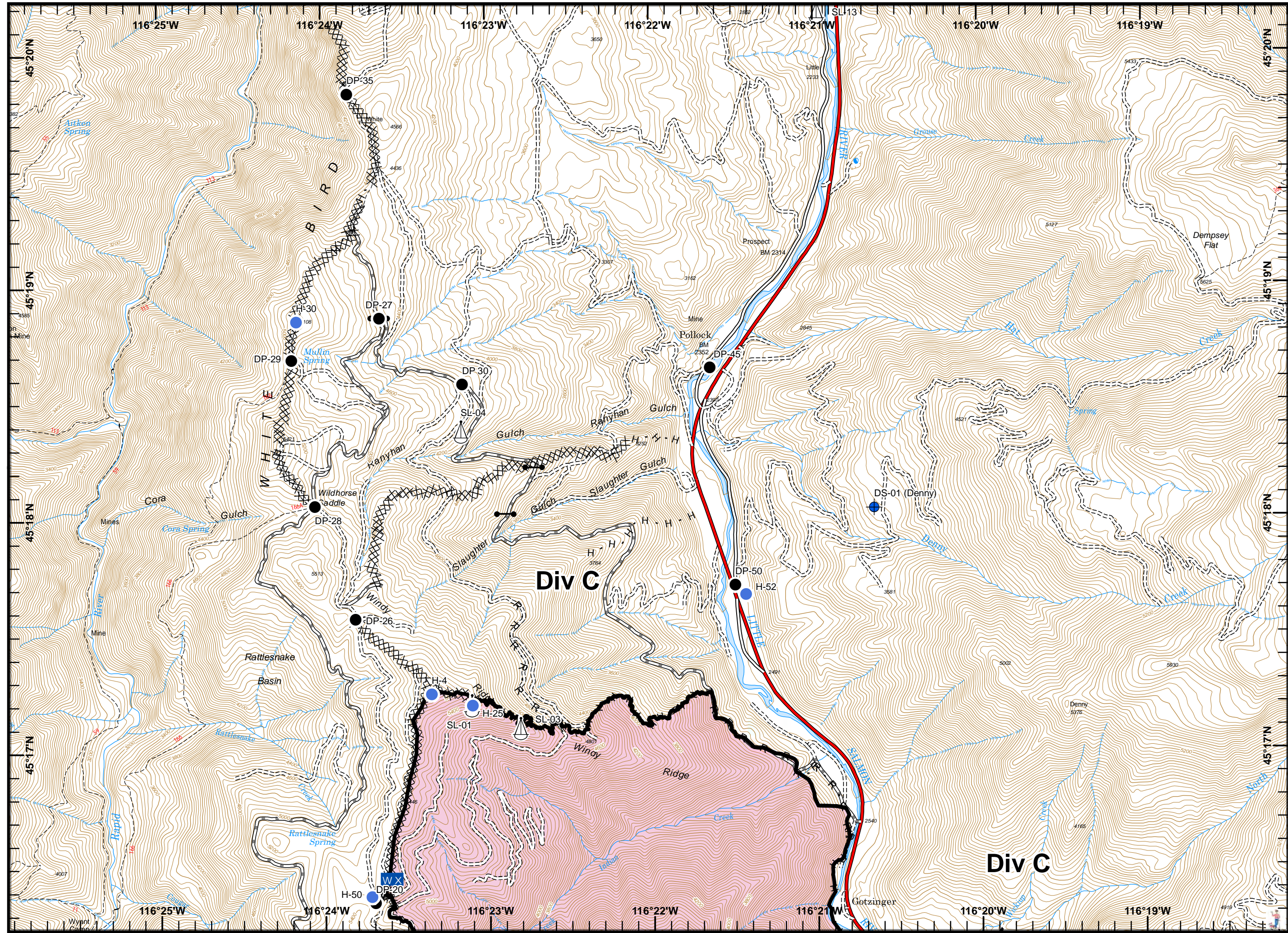


NAD 1983 UTM Zone 11N



- () Division
- [] Branch
- Dip Site
- Drop Point
- Gate
- Helispot
- W X Mobile Weather Unit
- ⚓ Sling Site
- Completed Line
- XXXX Completed Dozer Line
- H - Completed Hand Line
- R - Road as Completed Line
- Wildfire Daily Fire Perimeter

Map grid showing coordinates from 116°25'W to 116°19'W and 45°20'N to 45°17'N. A scale bar indicates 0 to 0.5 miles. A north arrow is also present.

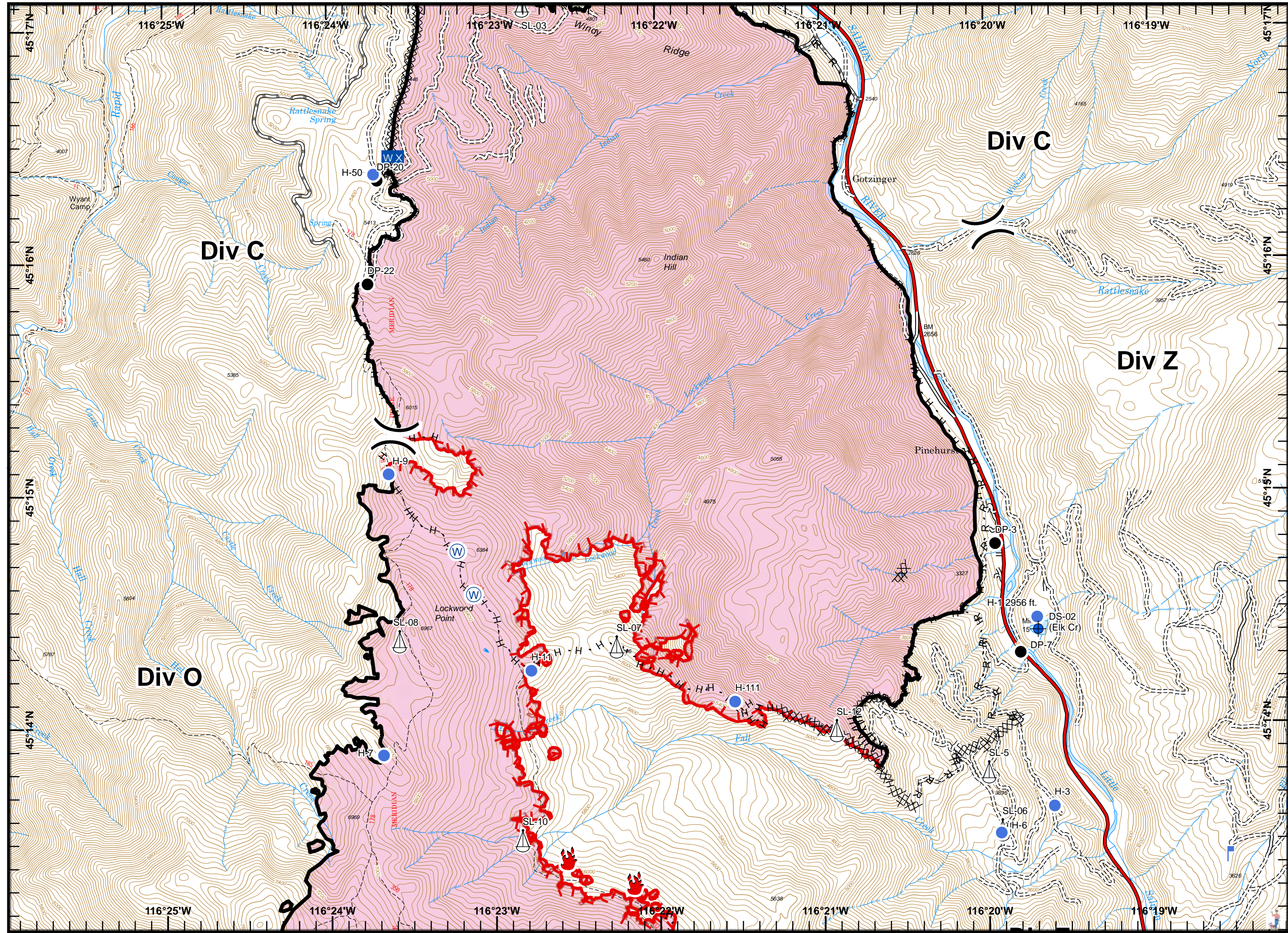


NAD 1983 UTM Zone 11N



-) (Division
- || Branch
- Dip Site
- Drop Point
- 🔥 Fire Location
- Helispot
- 🚒 Lookout
- WX Mobile Weather Unit
- 🪂 Sling Site
- 🌊 Water Source
- 🔴 Uncontrolled Fire Edge
- Completed Line
- XXXX Completed Dozer Line
- H · Completed Hand Line
- R · Road as Completed Line
- ⌘ Line Break Completed
- Planned Fire Line
- 🟡 Wildfire Daily Fire Perimeter

Map grid showing UTM coordinates: 116°25'W to 116°19'W and 45°17'N to 45°14'N. A scale bar indicates 0 to 0.5 miles. A grid index shows a 2x2 grid with the top-right cell (2) highlighted in red.

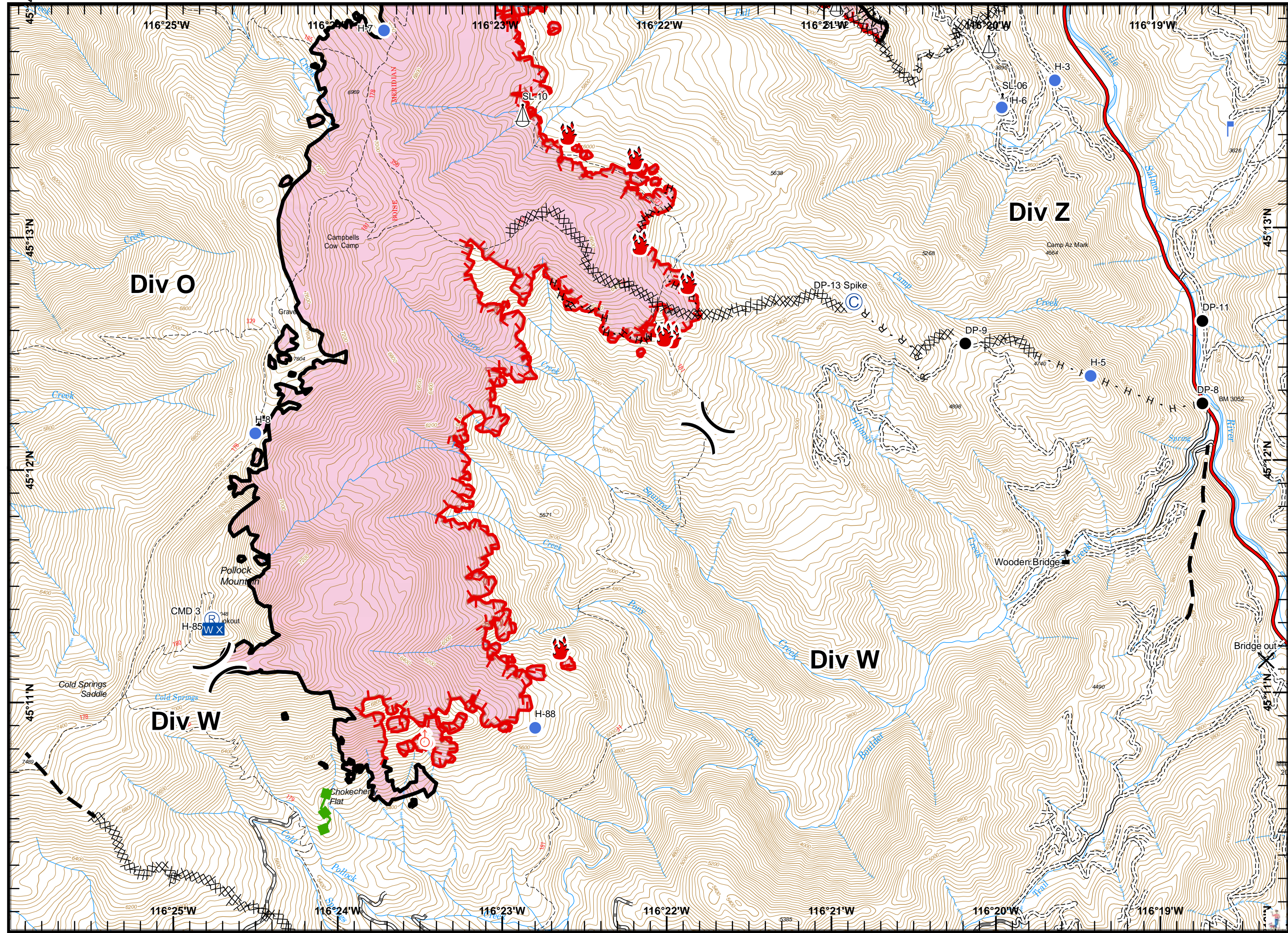


NAD 1983 UTM Zone 11N



-) (Division
- || Branch
- ⊙ Camp
- ✕ Closure
- Drop Point
- 🔥 Fire Location
- Helispot
- 🚒 Lookout
- WX Mobile Weather Unit
- Ⓡ Repeater
- 📏 Sling Site
- ♂ Spot Fire
- 🚩 Value at Risk
- 🔴 Uncontrolled Fire Edge
- Completed Line
- XXXX Completed Dozer Line
- H · Completed Hand Line
- R · Road as Completed Line
- ⌘ Line Break Completed
- Planned Fire Line
- 🚶 Escape Route
- 🟡 Wildfire Daily Fire Perimeter

0 0.5 miles



NAD 1983 UTM Zone 11N



-) (Division
-]] Branch
- X Closure
- Dip Site
- Drop Point
- Gate
- Helispot
- W X Mobile Weather Unit
- ♂ Spot Fire
- W Water Source
- Value at Risk
- Uncontrolled Fire Edge
- Completed Line
- Completed Dozer Line
- H - Completed Hand Line
- R - Road as Completed Line
- Planned Fire Line
- Escape Route
- Wildfire Daily Fire Perimeter

