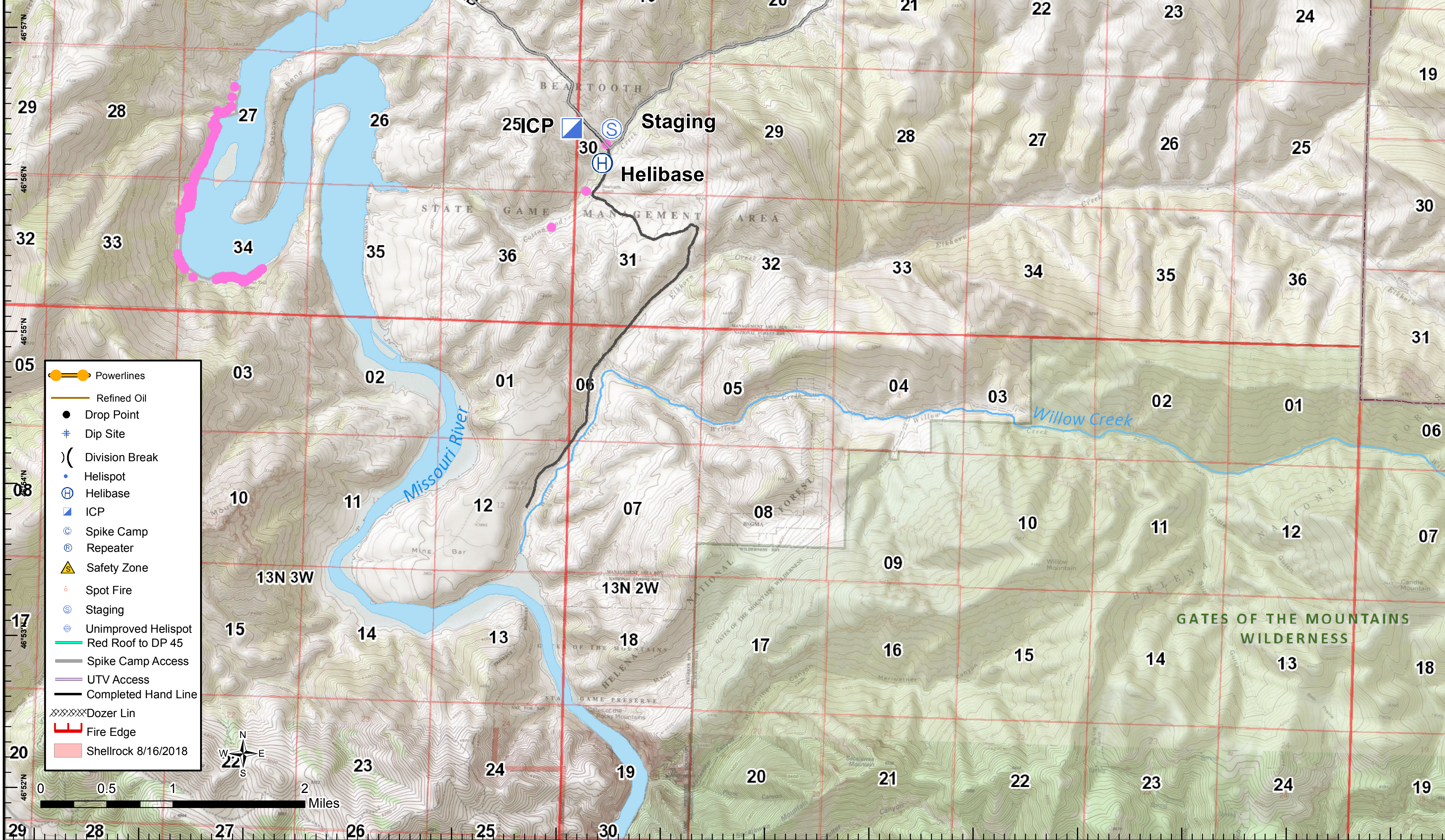
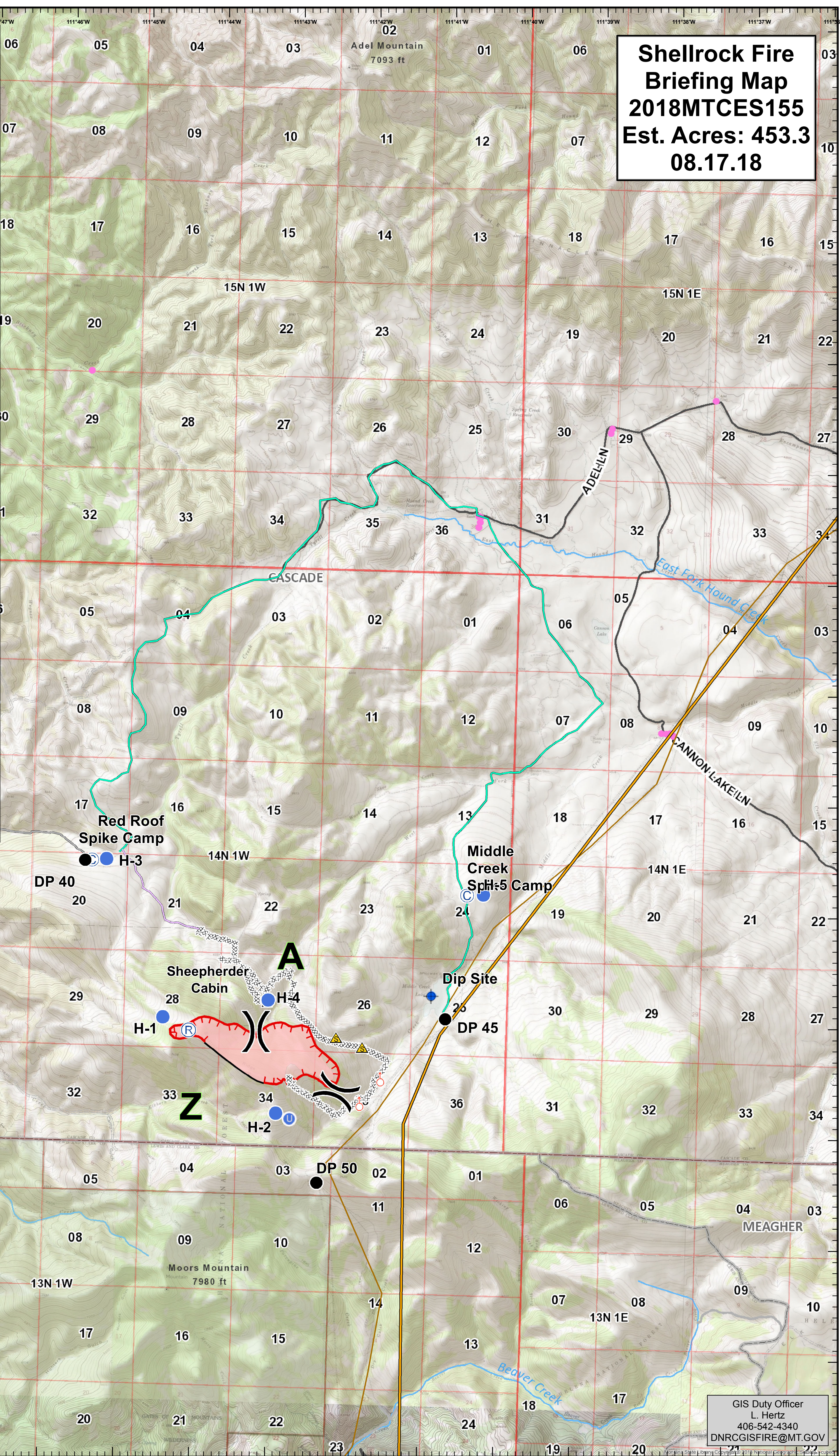
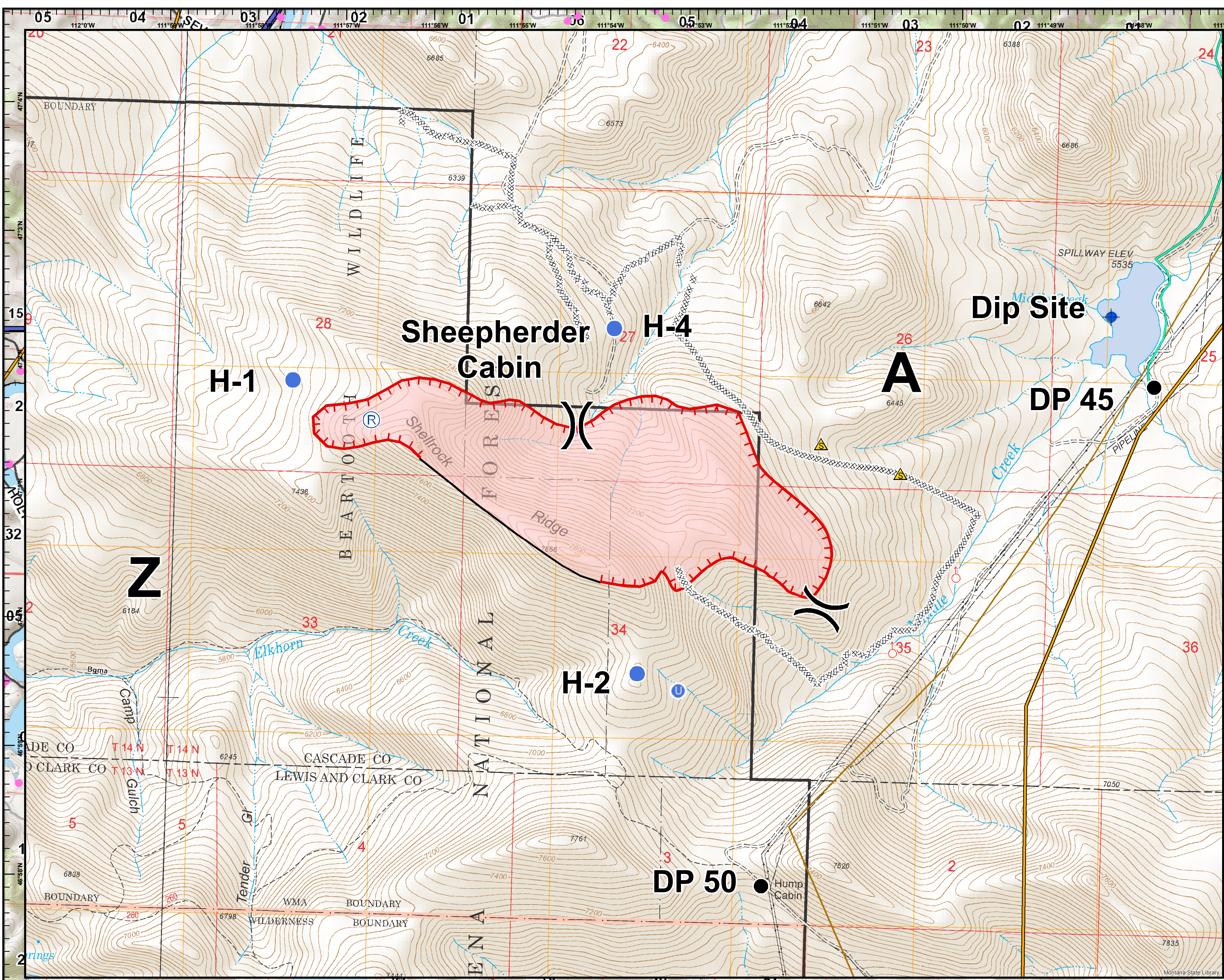


**Shellrock Fire  
Briefing Map  
2018MTCES155  
Est. Acres: 453.3  
08.17.18**



- Powerlines
- Refined Oil
- Drop Point
- Dip Site
- Division Break
- Helispot
- Helibase
- ICP
- Spike Camp
- Repeater
- Safety Zone
- Spot Fire
- Staging
- Unimproved Helispot
- Red Roof to DP 45
- Spike Camp Access
- UTV Access
- Completed Hand Line
- Dozer Lin
- Fire Edge
- Shellrock 8/16/2018



GIS Duty Officer  
L. Hertz  
406-542-4340  
DNRCCGISFIRE@MT.GOV